

Power System Operation Corporation Ltd.



38th TCC Meeting



ER Grid Performances

-
- **Frequency Profile**
 - **Demand / Energy met**
 - **Generation pattern**
 - **Transnational Exchange**
 - **Eastern-Regional Export Profile**
 - **Overdrawal of Odisha & WB**
 - **Trading in Exchange and Bilateral STOA**
 - **Line Tripping**
-

Frequency Profile

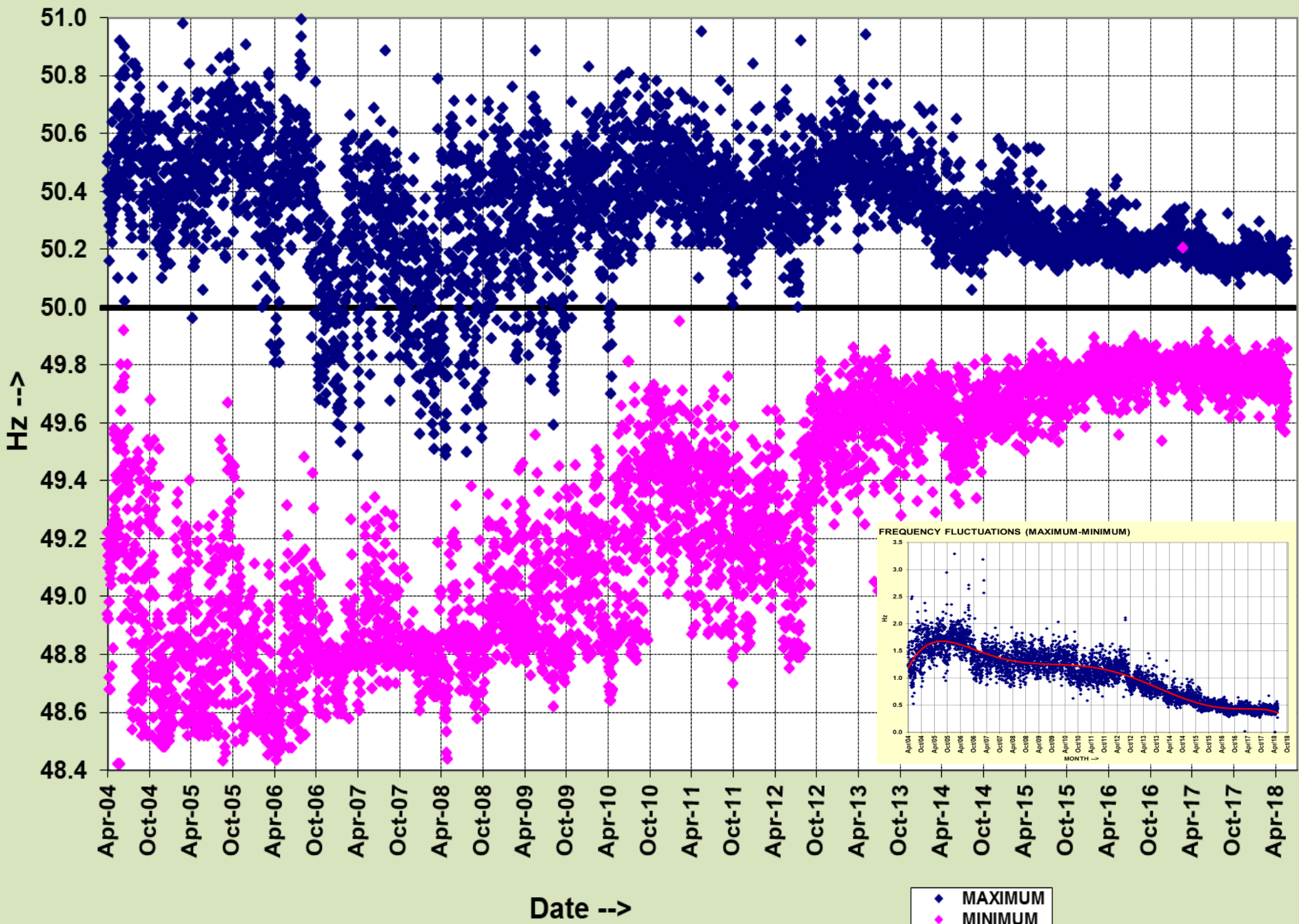
Highlights of Frequency Profile (Apr-18 to May'18)

- Maximum Freq - 50.22Hz on 12/05/18
- Minimum Freq – 49.56 Hz on 26/05/18
- Average Freq:- 49.96 Hz
- FVI:- 0.06

% of Frequency

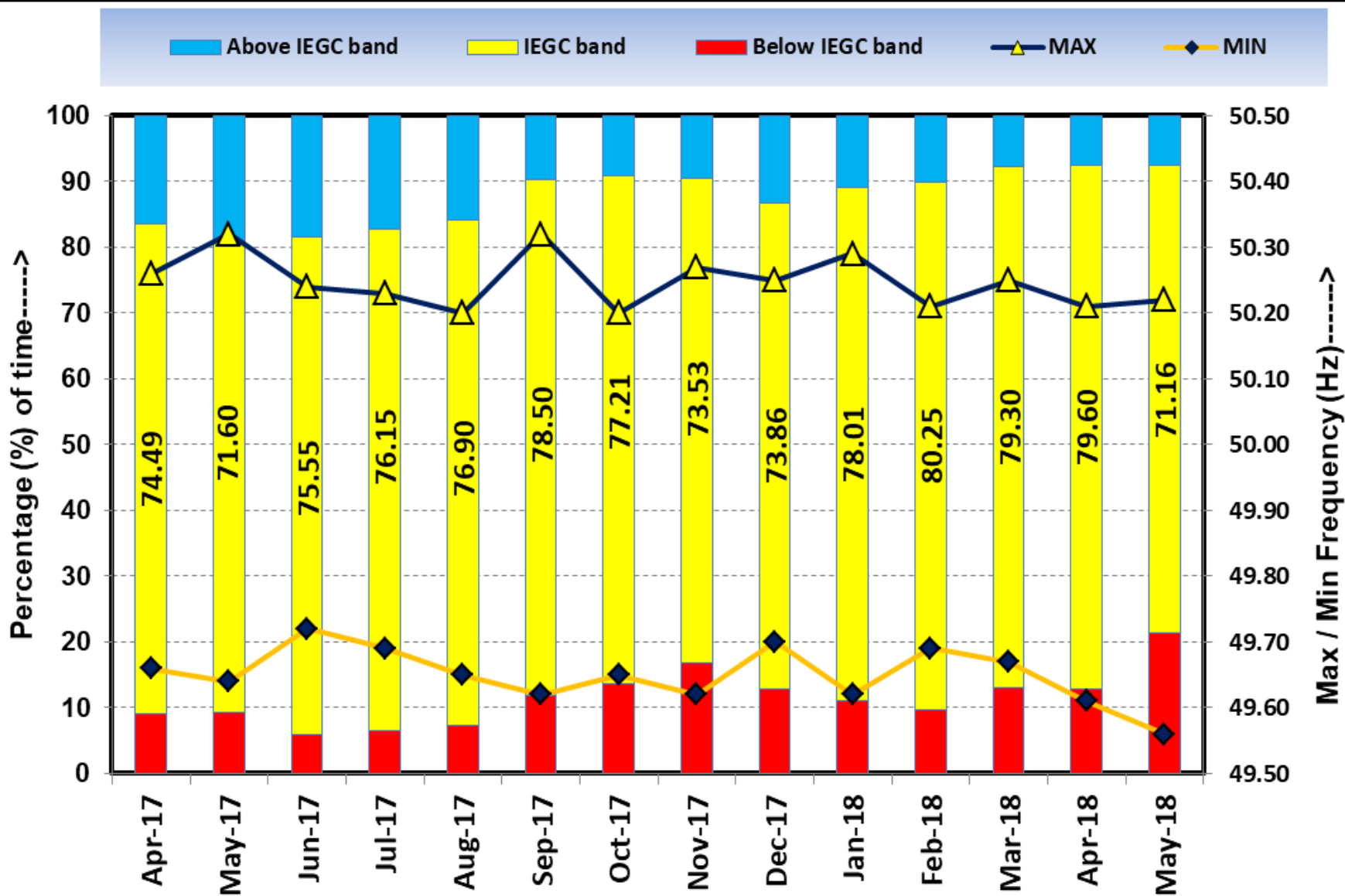
- 75.31% of the time freq was within IEGC Band
 - Within IEGC band **Max** =88.53% on 29/04/18
 - Above IEGC band **Max** =29.62% on 03/05/18
 - Below IEGC band **Max** =43.70% on 19/05/18
-

MAXIMUM AND MINIMUM FREQUENCY PATTERNS



Frequency Profile

Max: 50.22 Hz; Min: 49.56 Hz; Avg: 49.96 Hz;

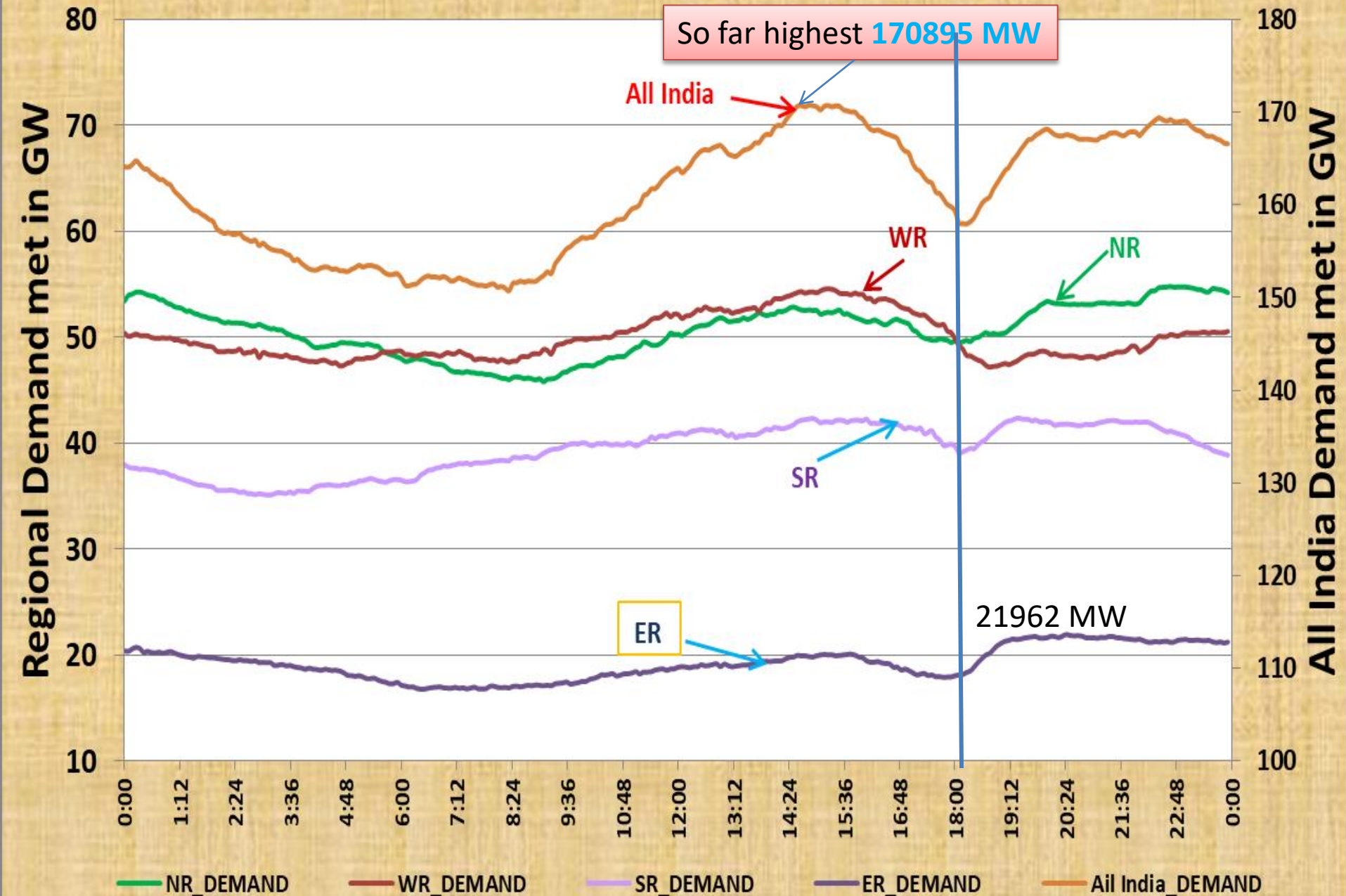


Demand / Energy Consumption Pattern

So Far Highest Demand

Region	Energy consumption (MUs)	Date	Demand (MW)	Date
ALL INDIA	3884	22/06/18	170895	30/05/18
NR	1394	25/06/18	61942	23/06/18
WR	1208	22/05/18	54658	30/05/18
SR	1080	29/03/18	48317	19/04/18
ER	483	19/06/18	22690	18/06/18
NER	52	08/06/18	2872	10/10/17
Constituent	Energy consumption (MUs)	Date	Demand (MW)	Date
Bihar	96.4	06-June-18	4868	25-May-18
DVC	75	23-Mar-17	3333	10-Apr-16
Jharkhand	27.8	19-May-18	1319	19-May-18
Odisha	103.5	24-May-18	4785	24-May-18
West Bengal	185.4	19-Jun-18	8768	18-June-18
Sikkim	2.1	07-Dec-17	117	28-Oct-16
ER	483	19-Jun-18	22690	18-June-18

Demand met in GW for the day of 30th May 2018



Energy Consumption Growth Trend

All India Growth: 5.01% (YoY – May-Avg.)
All time Max = 3862 MU on 31/05/2018

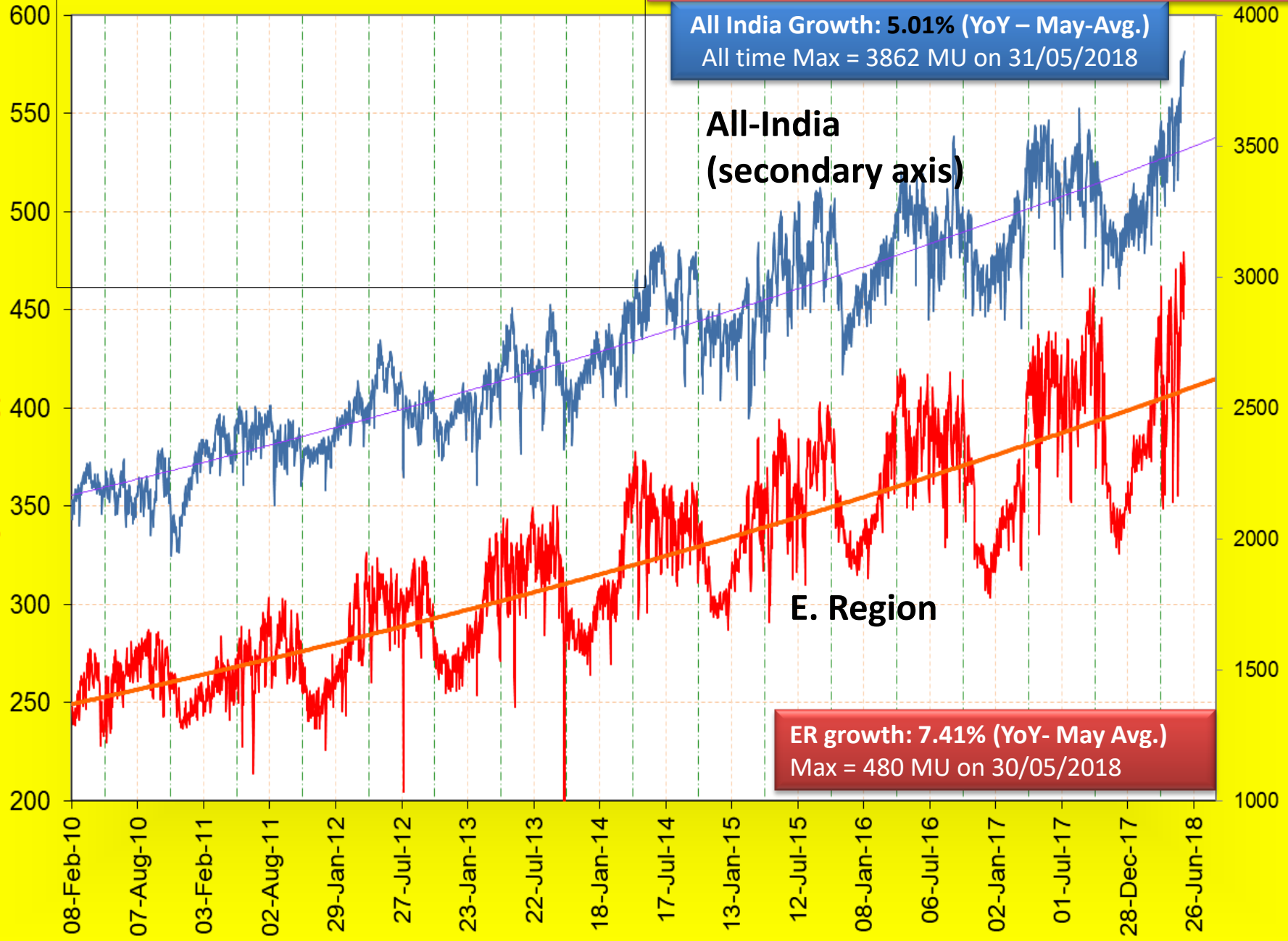
All-India
(secondary axis)

E. Region

ER growth: 7.41% (YoY- May Avg.)
Max = 480 MU on 30/05/2018

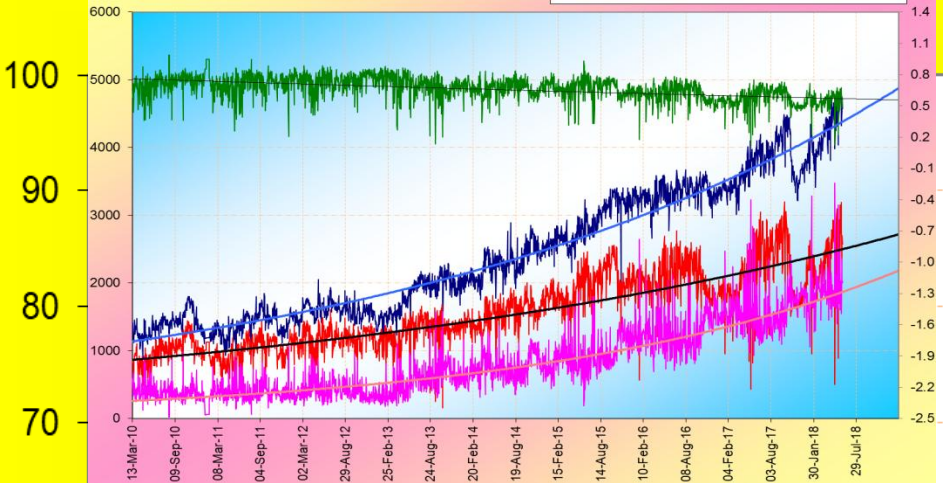
Eastern Region Energy Met in MU

All India Energy Met in MU

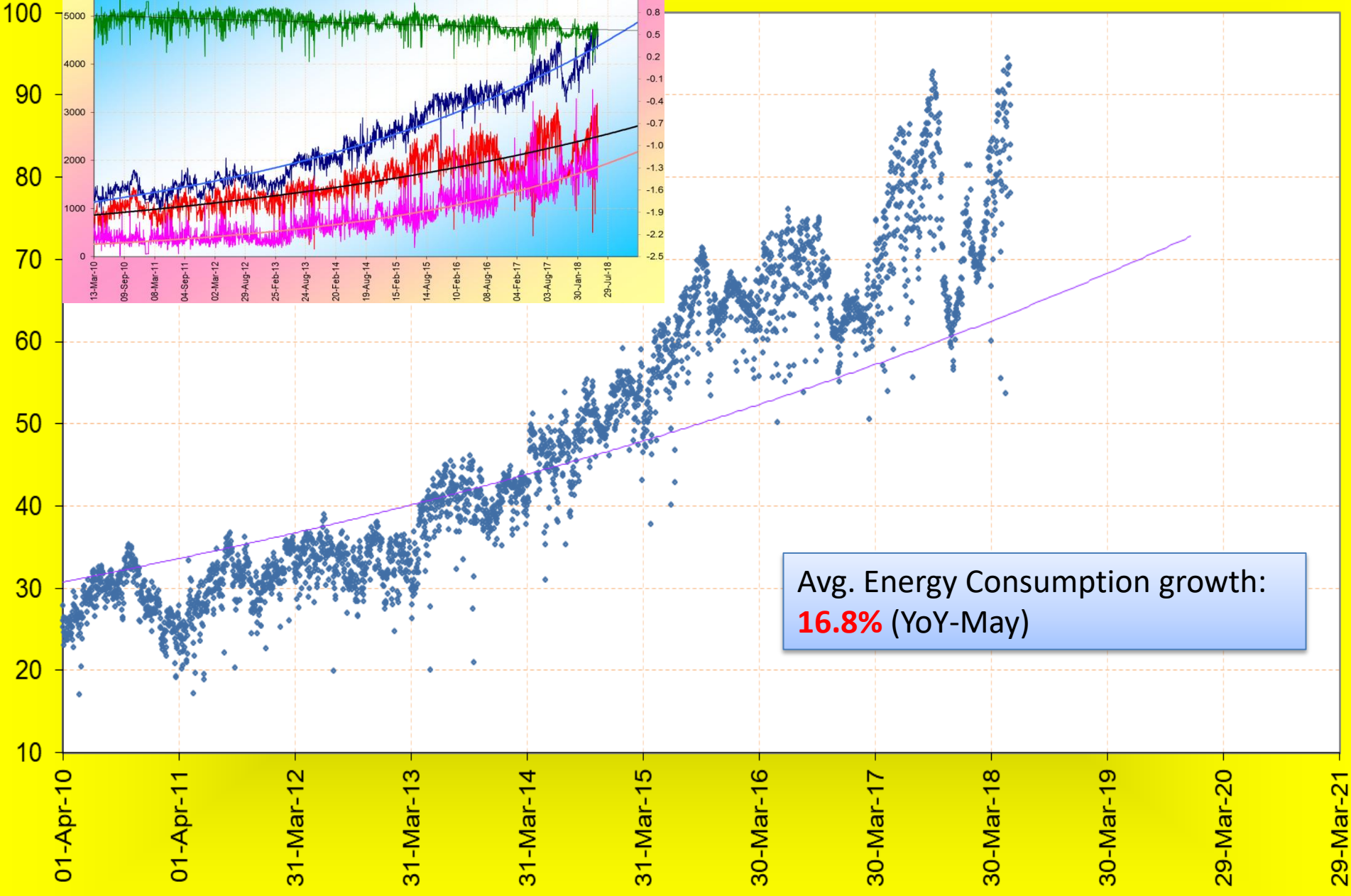


BSPHCL Demand in MW

— Max — Min — Max_Min — "Min/Max"



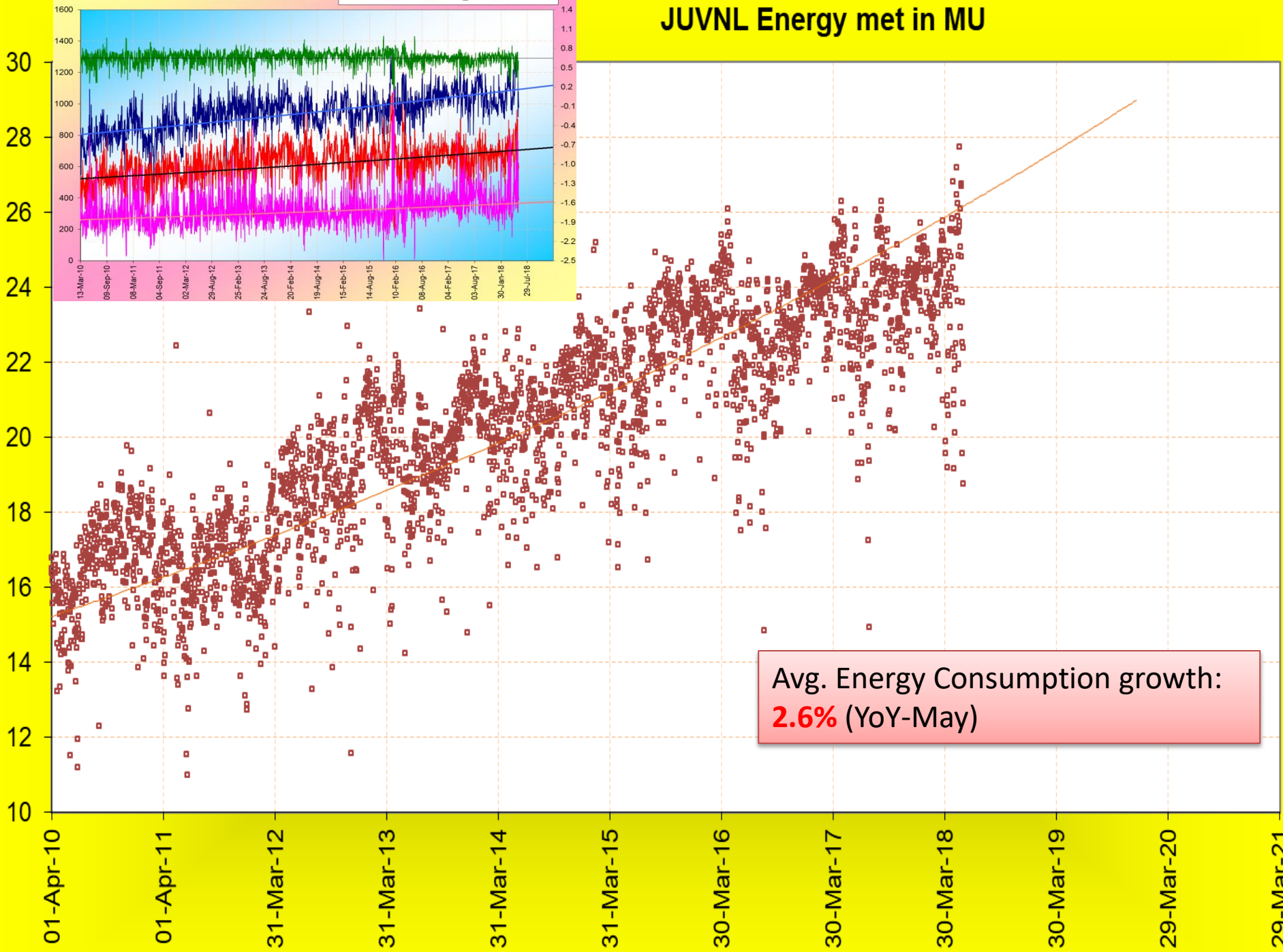
BSPHCL Energy met in MU



JUVNL Demand in MW

Max Min Max_Min "Min/Max"

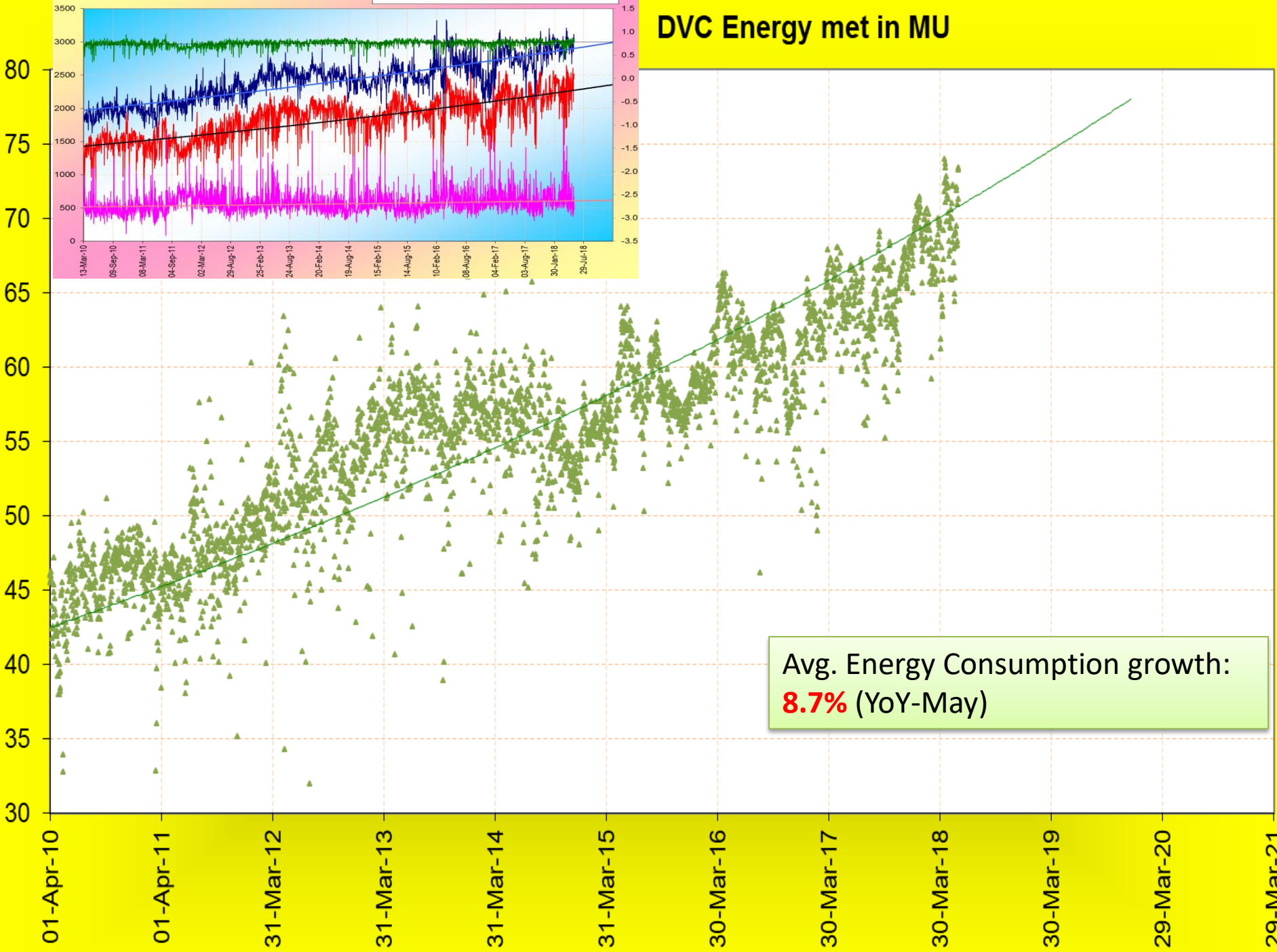
JUVNL Energy met in MU



DVC Demand in MW

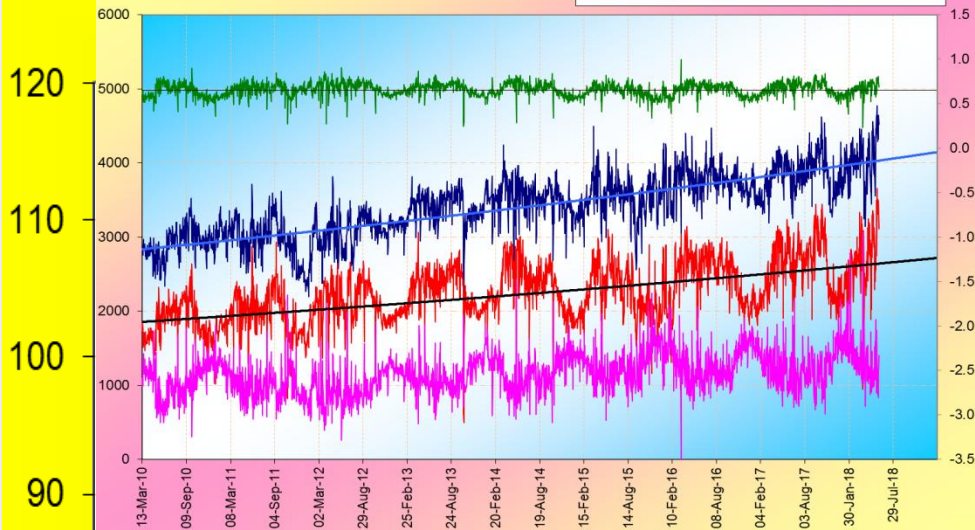
— Max — Min — Max_Min — "Min/Max"

DVC Energy met in MU

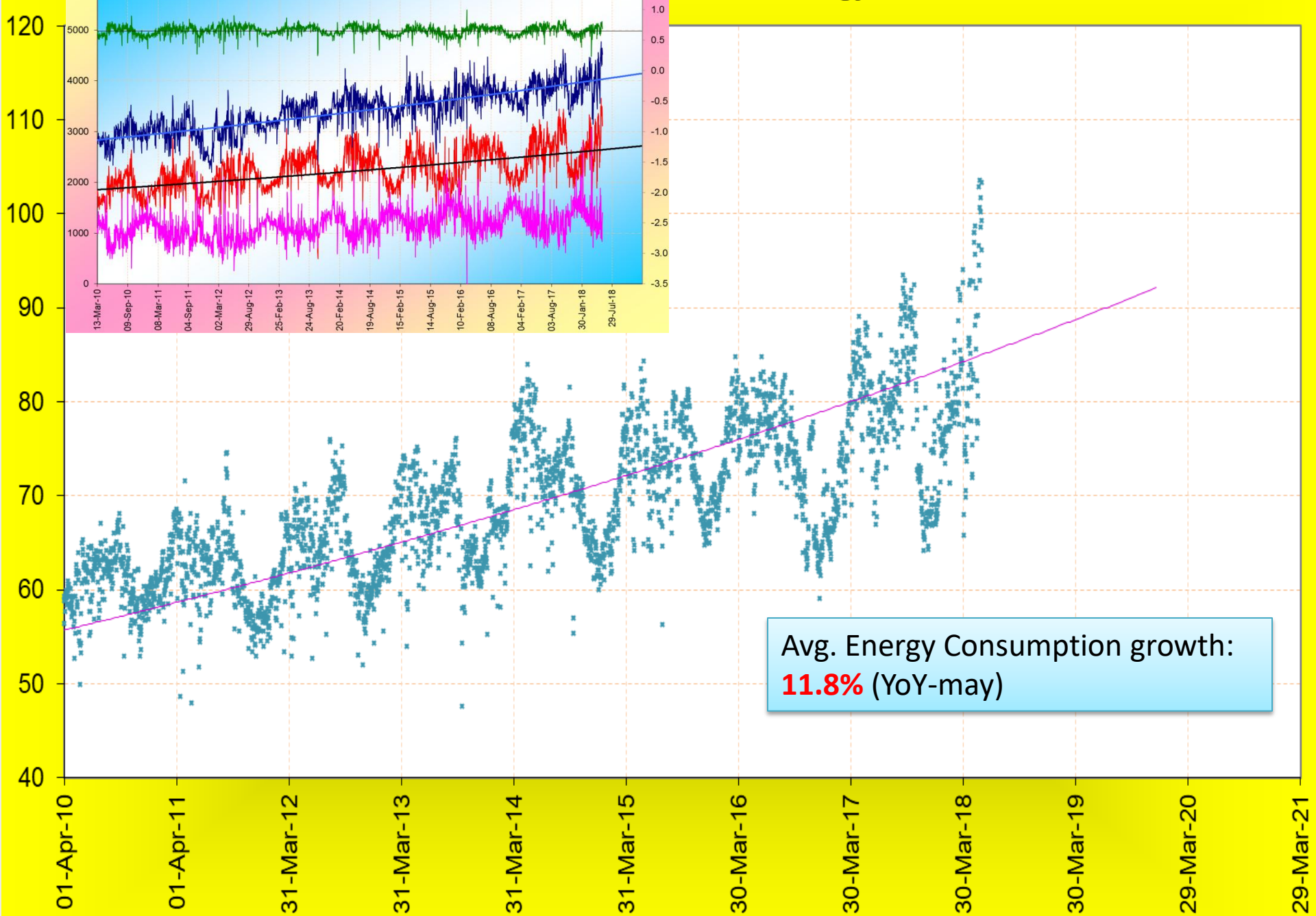


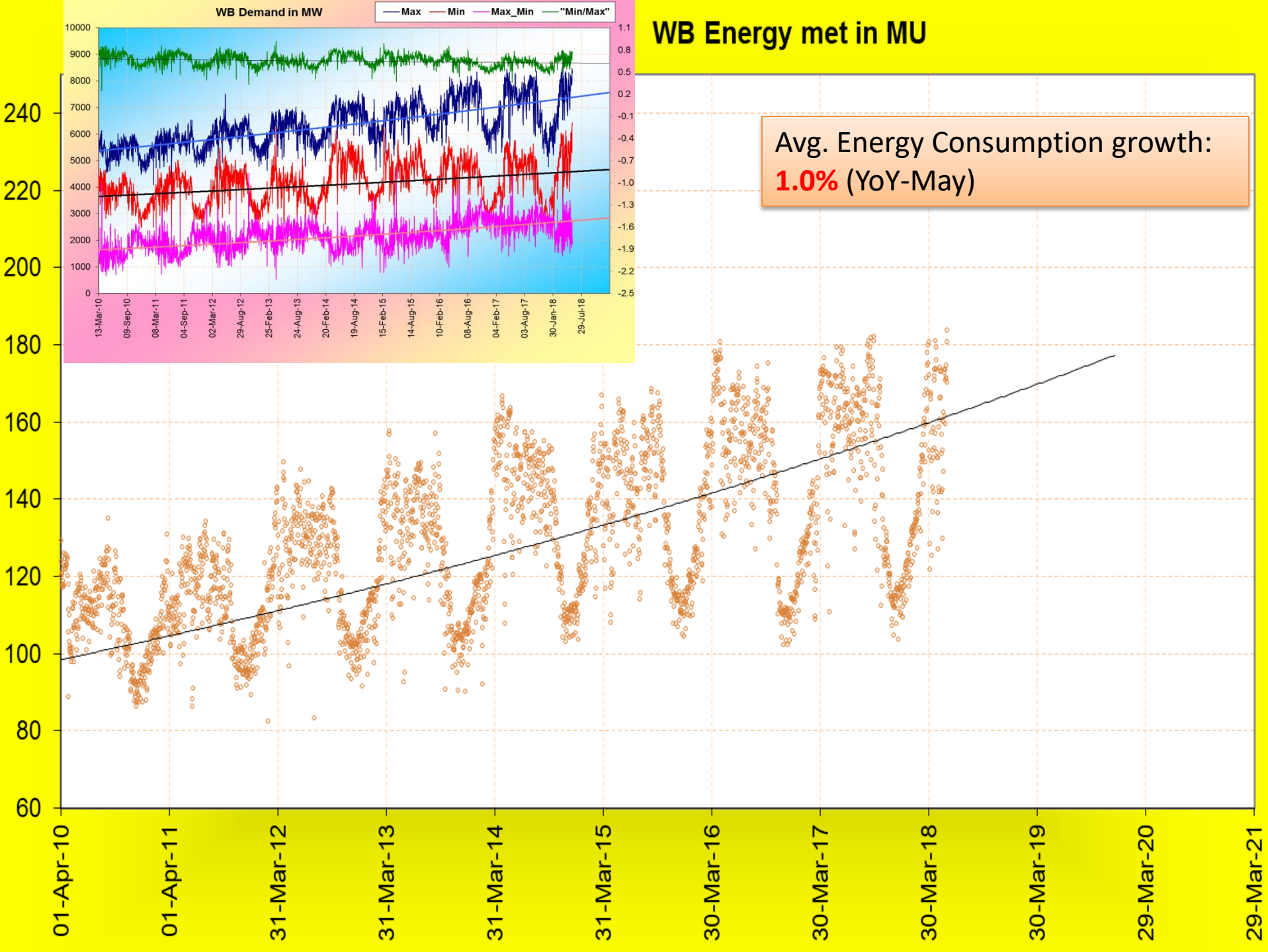
ODISHA Demand in MW

— Max — Min — Max_Min — "Min/Max"

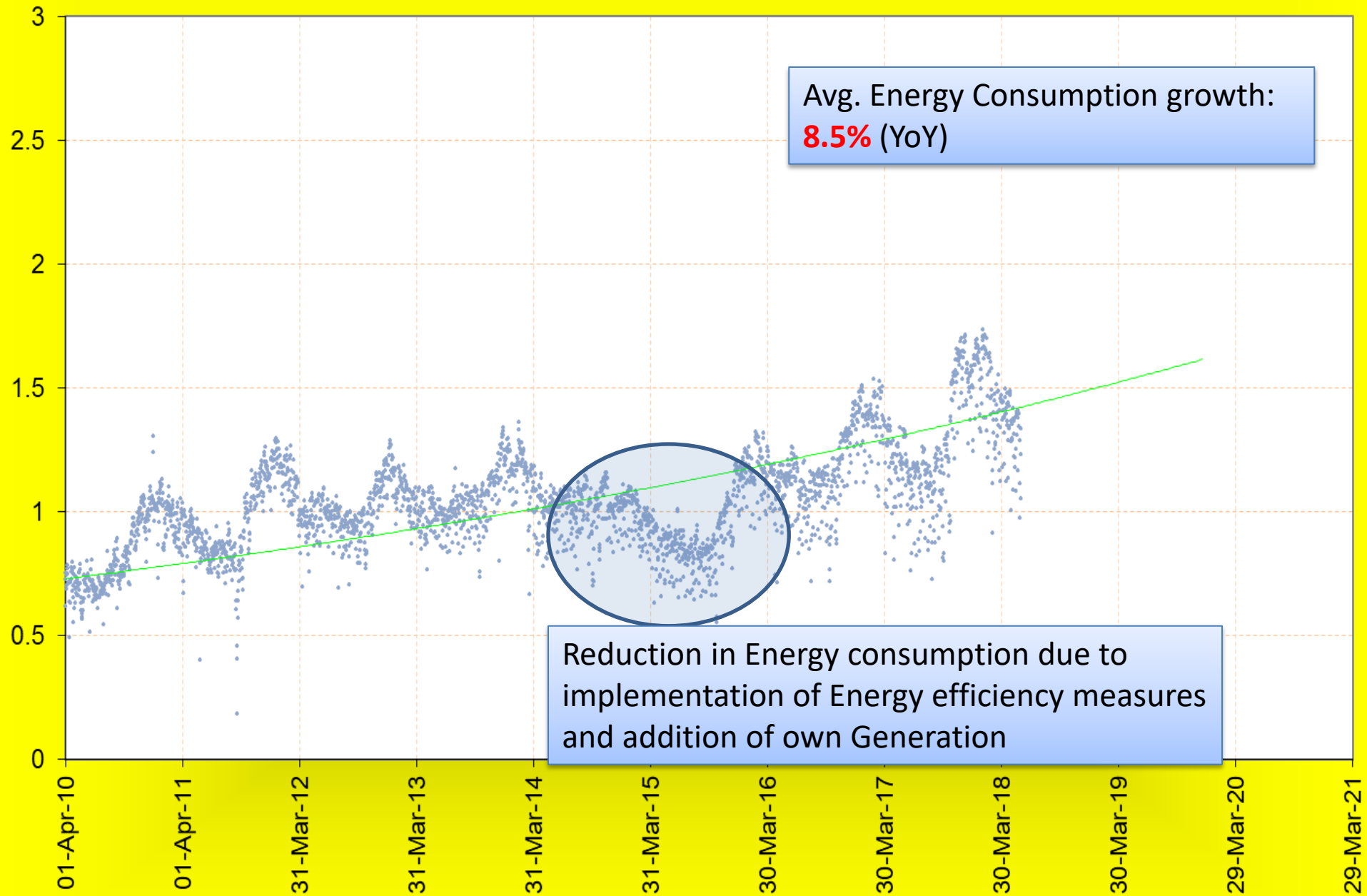


Odisha Energy met in MU

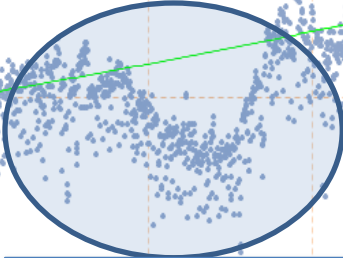




Sikkim Energy met in MU



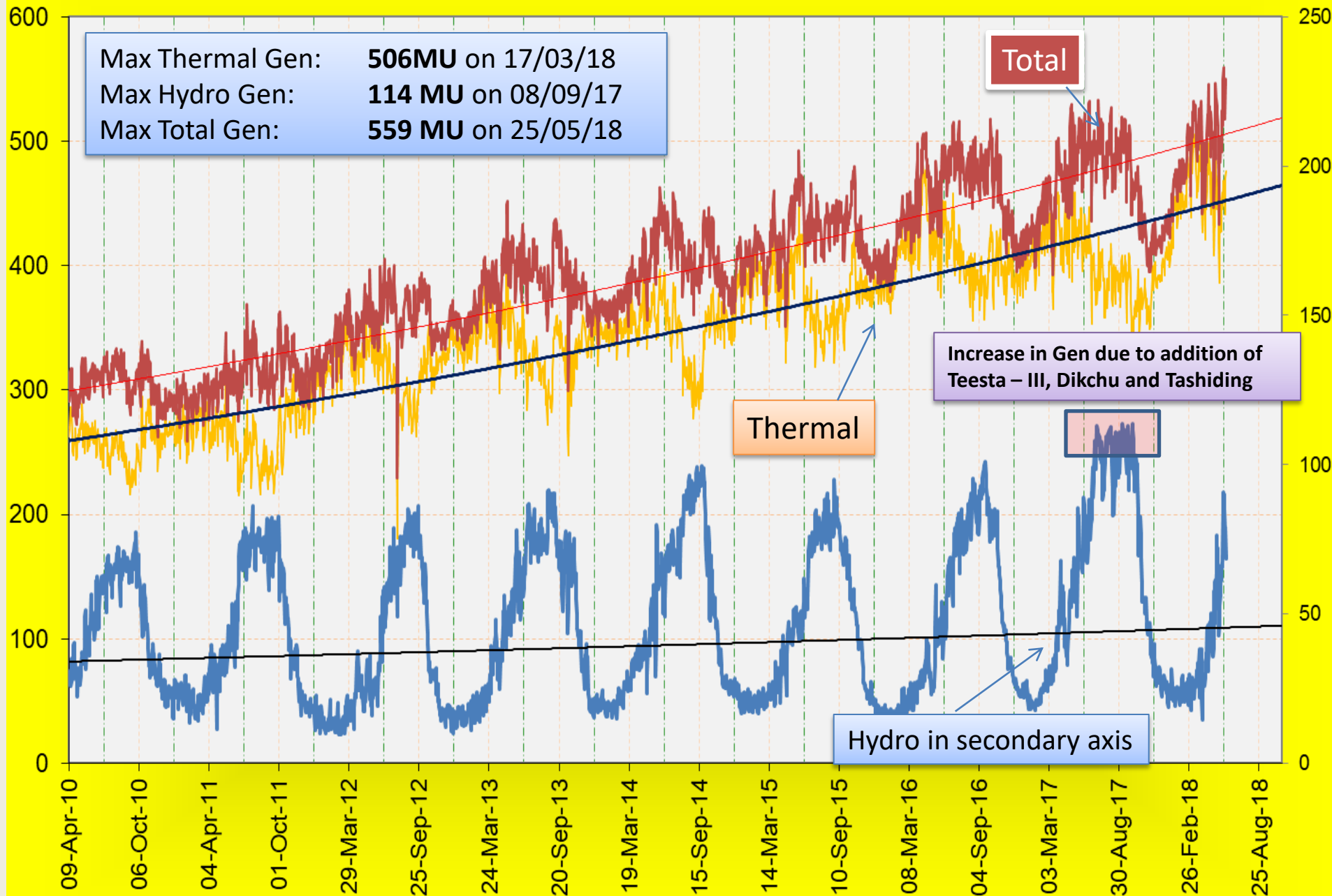
Avg. Energy Consumption growth:
8.5% (YoY)



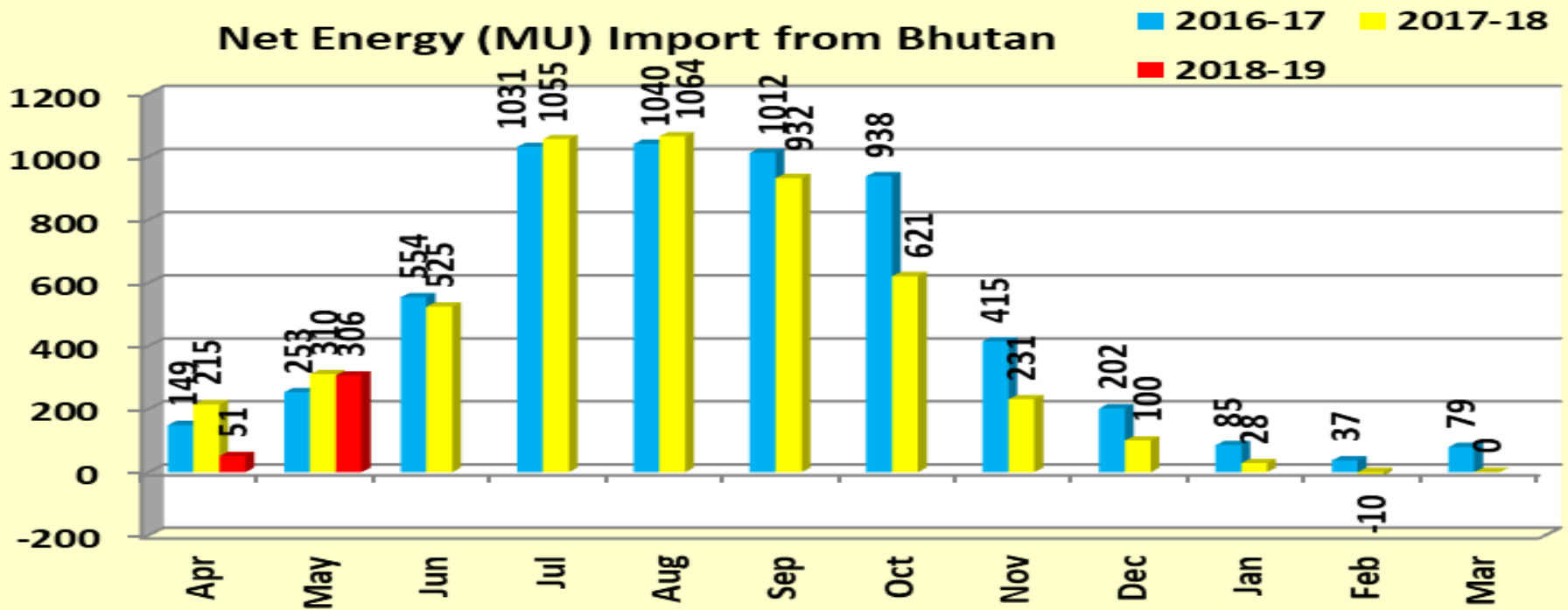
Reduction in Energy consumption due to implementation of Energy efficiency measures and addition of own Generation

Generation pattern

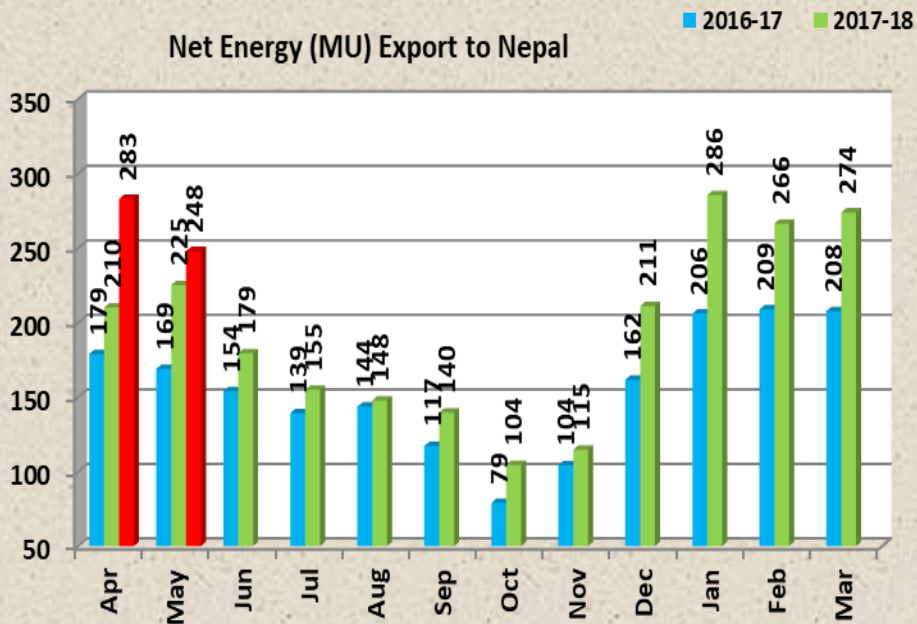
Daily Generation in MU



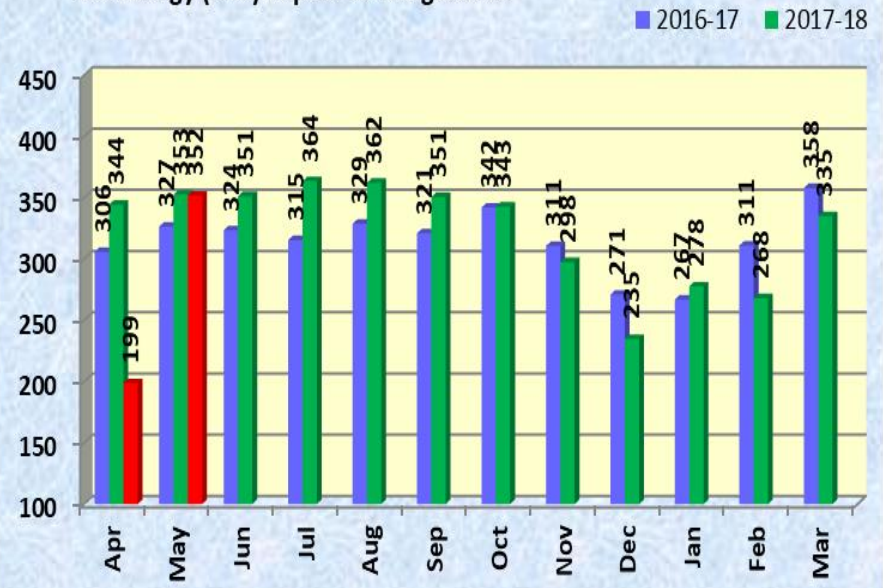
Net Energy (MU) Import from Bhutan



Net Energy (MU) Export to Nepal

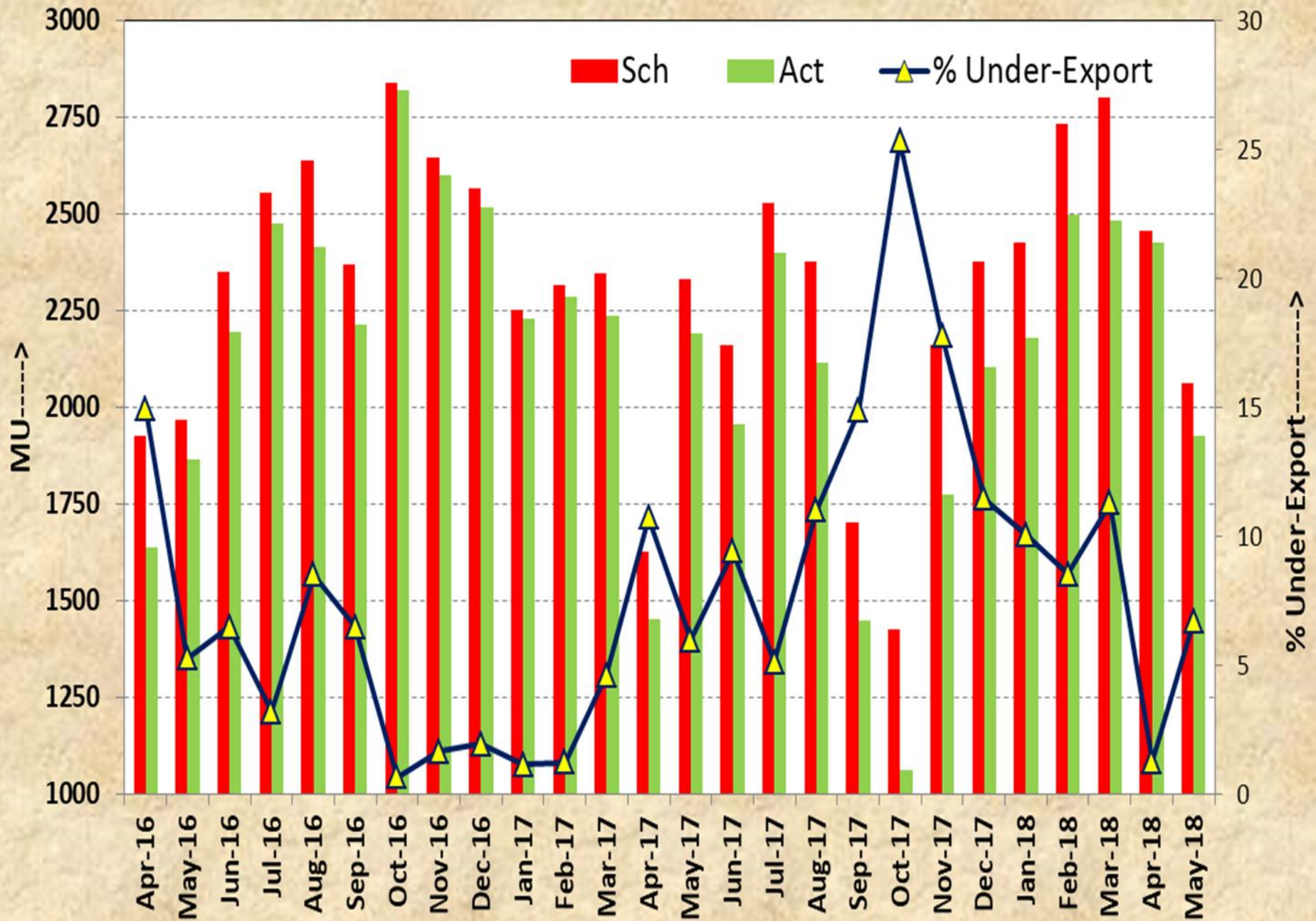


Net Energy (MU) Export to Bangladesh

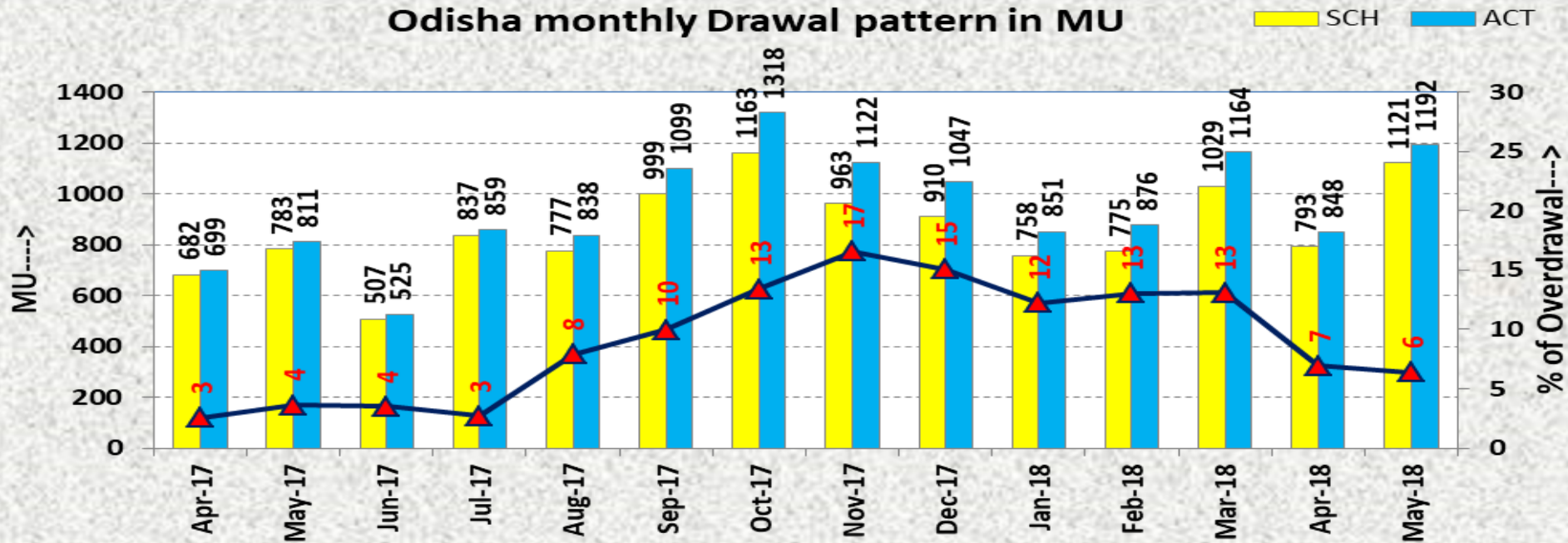


Overdrawal of ER /Odisha & WB

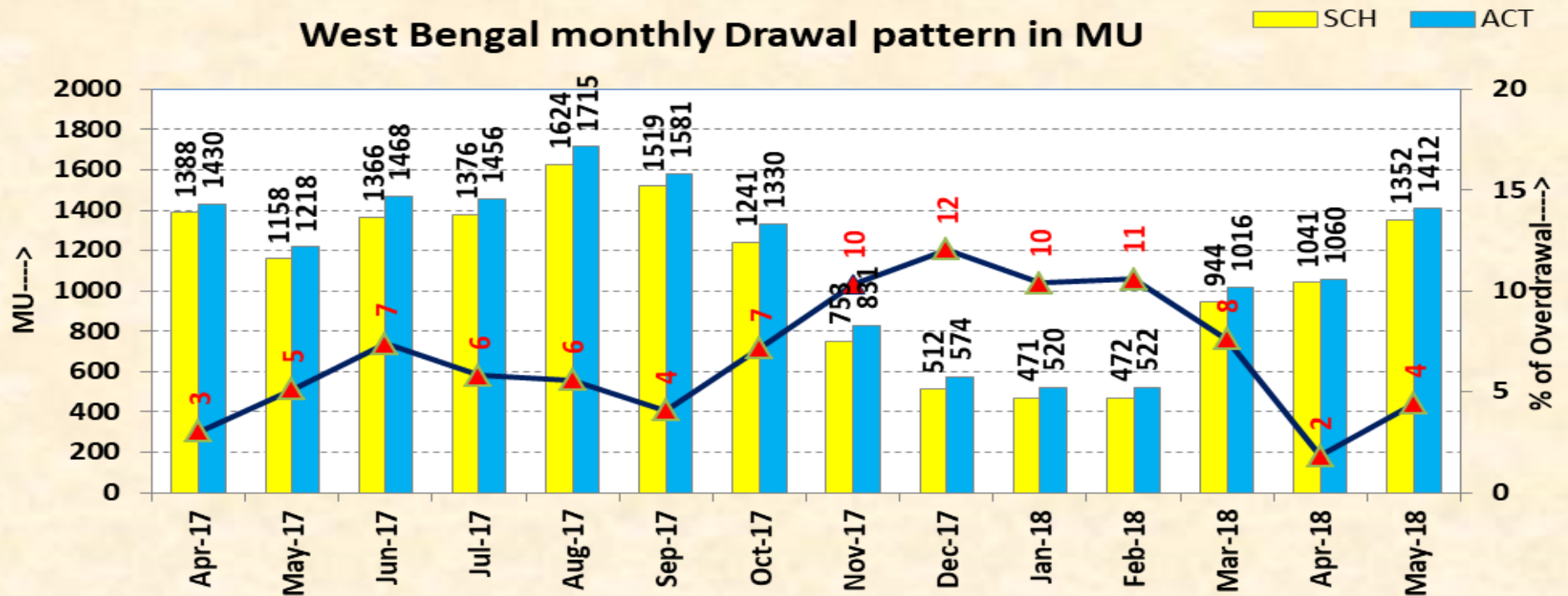
Monthly Net Export (In MU) from Eastern Region to Other Regions



Odisha monthly Drawal pattern in MU



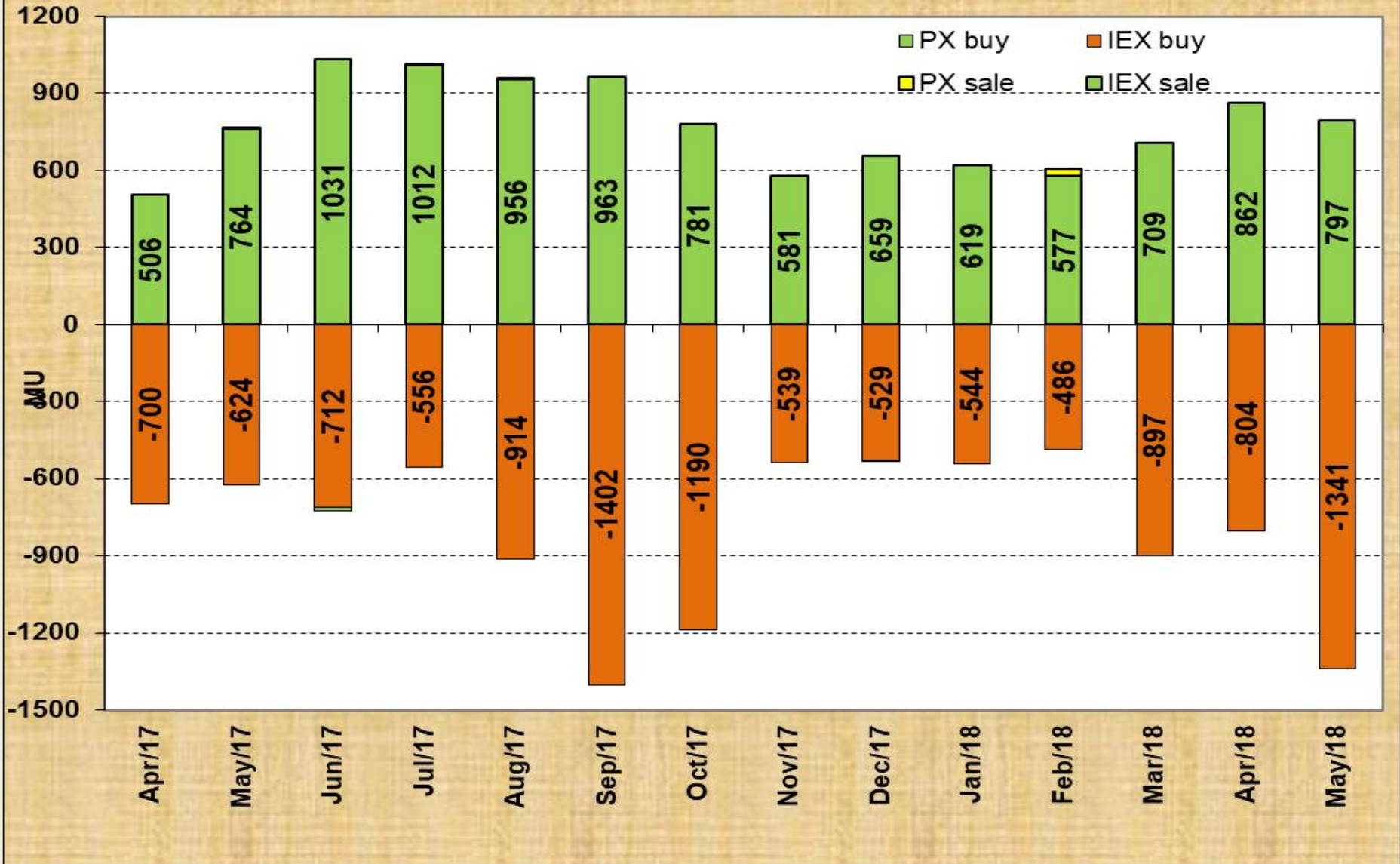
West Bengal monthly Drawal pattern in MU



Trading in Exchange and Bilateral STOA

Sale(+)/Buy(-) volume in MU through IEX and PXIL

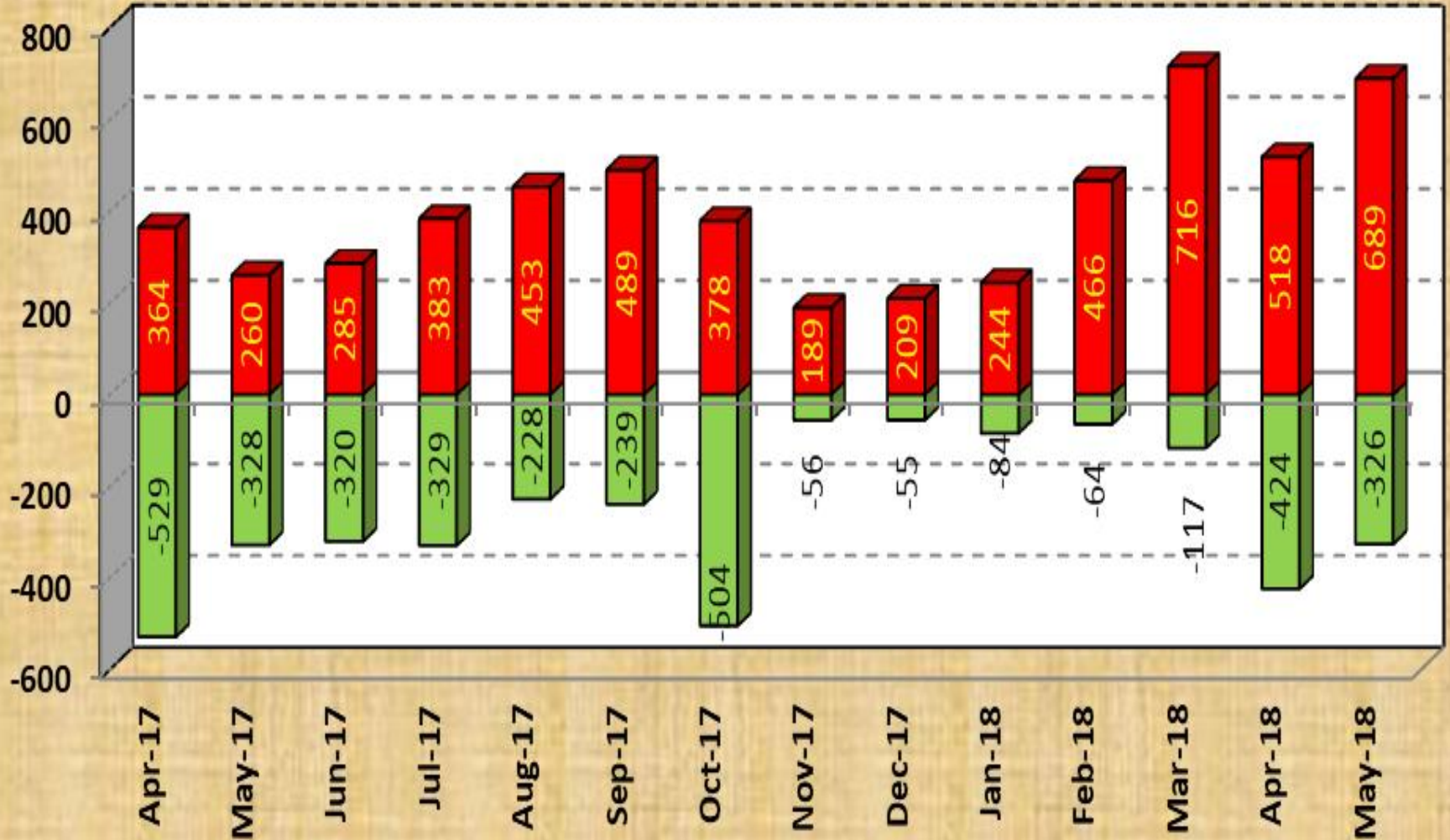
Sale(+)/Buy(-) volume through IEX and PXIL



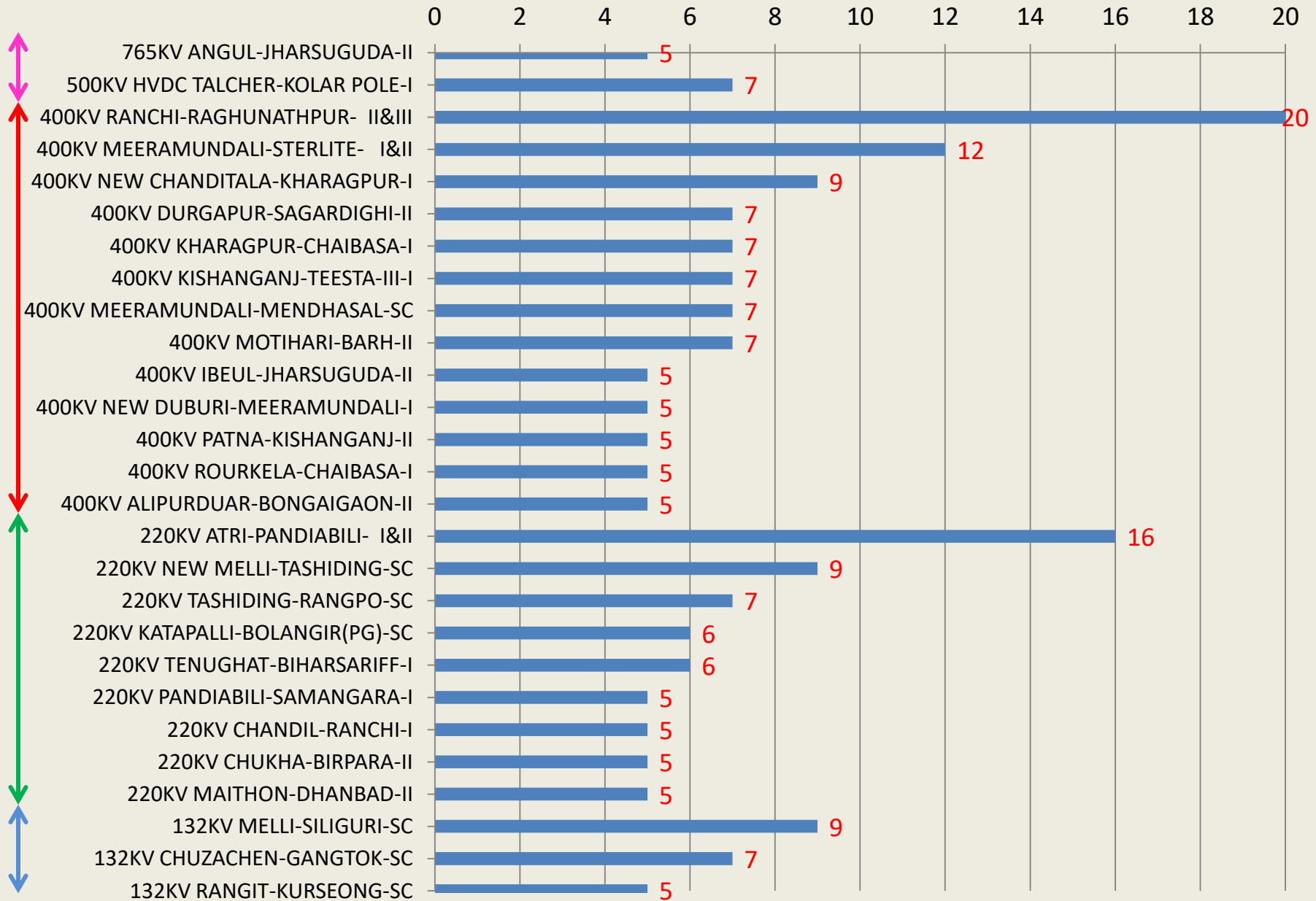
Scheduled Bilateral Export/Import in MU

Import by ER(-)

Export by ER(+)



Following important lines tripped 5 times or more than that during the month of Feb-May, 2018 :



T H A N K Y O U

T H A N K Y O U