

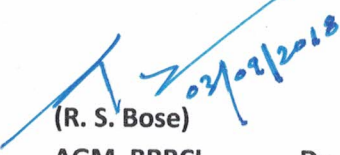
Eastern Regional Power Committee, Kolkata

Minutes of Special Meeting on issues related to drawl of Start-up power for unit #3 of BRBCL, Nabinagar held on 03.09.18 at ERPC Kolkata

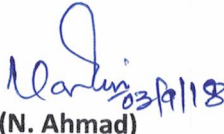
Member Secretary, ERPC welcomed all the participants to the special meeting. He informed that this special meeting was convened on a short notice as per the request of BRBCL to discuss issue related to drawl of Start-up power for unit #3 of BRBCL, Nabinagar.

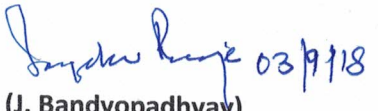
The schemes given by BRBCL, Nabinagar were discussed and the following decisions have been arrived at:

1. Accounting methodology, as submitted by BRBCL, Nabinagar for drawl of start up power from ST#1 (70MVA), was agreed upon and given in Annexure-I.
2. 2 Main meters at Bus SC and SD and 2 Standby meters at bus SA and SB will be required. Further 1 no. of meter at HV side of GT will also be required as per Annexure-2.
3. CTU/POWERGRID will install the above 5 nos. of meters for accounting of drawl of Start-up Power of BRBCL U#3. Further, the above meters will be installed latest within 1 week.
4. U#3 of BRBCL, Nabinagar shall draw start-up power w.e.f. 10.09.2018 after fulfilling all the requisite procedures as per CERC regulations.
5. The above arrangement for drawl of start-up power of U#3 of BRBCL is an interim arrangement and is valid till 30.11.2018.
6. Any infirm injection during the above period shall be allowed with explicit approval from ERLDC.
7. BRBCL, Nabinagar informed in the meeting that they expected ST#2 to be available by November,2018.
8. Infirm injection after 30.11.2018, if required, shall be allowed only after review and explicit approval by ERPC and ERLDC. However, start up power can be continued to be drawn even after 30.11.2018.


(R. S. Bose)
AGM, BRBCL


(S. Kumar)
Dy. Manager, BRBCL


(N. Ahmad)
Manager, ERLDC


(J. Bandyopadhyay)
MS, ERPC

BRBCL Metering and Accounting Calculation:

Following condition may exist at different stages of commissioning of Unit#3 of BRBCL, NTPP and subsequent declaration of Commercial operation-

- **Case I** - When Unit#1, Unit#2 or either one of them is generating firm power, and Unit#3 is under commissioning :
 - (i) U#3 Commissioning power/Start up power = Energy drawn by {SC + SD}
 - (ii) Firm power of BRBCL = ESO (Line 1)+ ESO (Line 2) + Energy drawn by {SC + SD}
- **Case II** - When Unit #1 & Unit#2 both are under shut down, and Unit#3 is under commissioning :-
 - (i) Firm power of BRBCL = 0
 - (ii) BRBCL DSM Charges =(-) Energy drawn by (Line-1 + Line-2) +Energy drawn by {SC + SD}
 - (iii) U#3 Commissioning power/Start up power = Energy drawn by {SC + SD}
- **Case III** – When Unit#1, Unit#2 or either one of them is generating firm power, and Unit#3 is generating Infirm Power.
 - (i) **Firm power** of BRBCL =ESO(Line 1)+ ESO(Line 2) – GT3 +Energy drawn by {SC + SD}
 - (ii) **Infirm Power** of Unit#3 = GT3 - Energy drawn by {SC + SD}

Where,

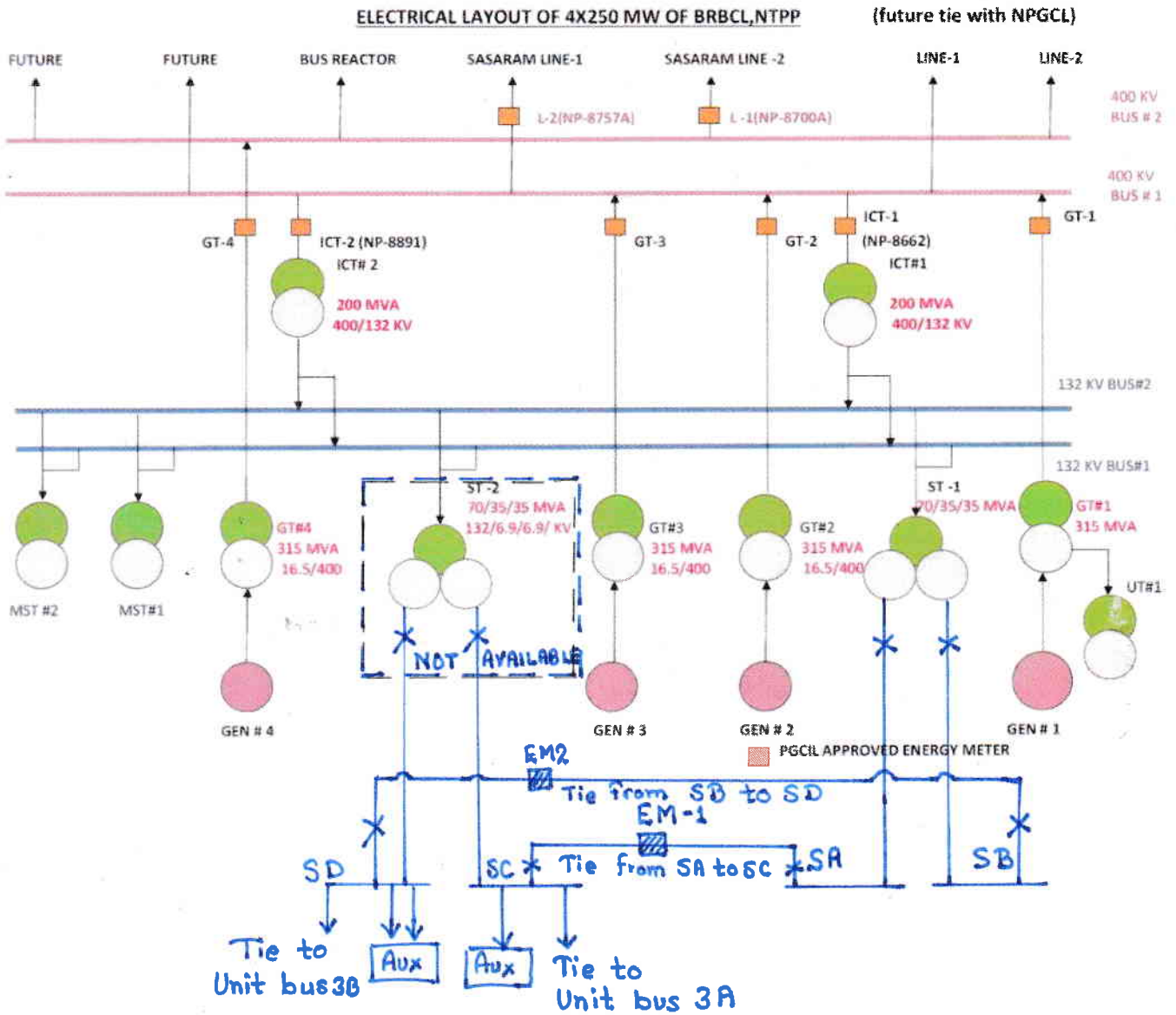
GT1 = SEM data of GT Unit-1

GT2 = SEM data of GT Unit-2

GT3 = SEM data of GT Unit-3

SC = SEM data of SC bus for Tie from SA (ST#1) bus

SD = SEM data of SD bus for Tie from SB (ST#1) bus



NEW METERS PROPOSED:

EM-1: Tie from SA to SC

EM-2: Tie FROM SB to SD

SEM installed at BRBCL:

- 400 KV SASARAM Line - 1 = NP 8700 A
- 400 KV SASARAM Line - 2 = NP 8757 A
- HV SIDE OF GT-1 = NP 8892 A
- HV SIDE OF GT-2 = ER-1299-A
- HV SIDE OF 400/132 ICT- 1 = NP 8891A
- HV SIDE OF 400/132 ICT -2 = NP 8662 A