

EASTERN REGIONAL POWER COMMITTEE

14, GOLF CLUB ROAD, TOLLYGUNGE, KOLKATA-700 033
Ph: 033-24239651/24239659 # Fax: 033-24239652/53 # Web: www.erpc.gov.in

**AGENDA FOR 47th COMMERCIAL SUB-COMMITTEE MEETING OF ERPC TO BE HELD
ON 11.11.2022 (FRIDAY)
AT 11:00 HRS THROUGH PHYSICAL MODE AT ERPC SECRETARIAT, KOLKATA.**

ITEM NO. A1: Confirmation of the minutes of the 46th Commercial Sub-Committee meeting held on 06.07.2022.

The minutes of the 46th Commercial Sub-Committee meeting were uploaded on ERPC website.

Members may confirm the minutes of the 46th Commercial Sub-Committee Meeting.

PART B: ITEMS FOR DISCUSSION

ITEM NO. B.1: New regulations/Orders of MoP/CEA/CERC

1. CERC vide notification dated 14th March'2022 had issued Central Electricity Regulatory Commission (Deviation Settlement Mechanism and Related Matters) Regulations, 2022 and vide order dated 31st October'2022, has notified that the same will be implemented w.e.f. 05.12.2022.
2. CERC vide notification dated 31.01.2022 had issued Ancillary Service regulation'2022 and vide order dated 31st October'2022, has notified that the same will be implemented w.e.f. 05.12.2022.

ERPC Secretariat will give a brief presentation highlighting the important clauses of above regulations.

ITEM NO. B.2: Reduction of Odisha LTA of 300.64 MW from Talcher Stage-I.

As per Regulations 13 (11) of CERC (Sharing of Inter State Transmission Charges and Losses) Regulations, 2020:

'Where a generating station is connected to both ISTS and intra-state transmission system, only ISTS charges and losses shall be applicable on the quantum of Long-Term Access and Medium-Term Open Access corresponding to capacity connected to ISTS'.

Further as per clause 6.5 of 'Procedure for computation and Sharing of Inter-State Transmission System Charges 'in compliance of CERC (Sharing of Inter State Transmission Charges and Losses) Regulations, 2020.

'Where a generating station is connected to both ISTS and intra-state transmission system, only ISTS charges and losses shall be applicable on the quantum of Long-Term

Access and Medium-Term Open Access corresponding to capacity connected to ISTS. Accordingly, LTA/MTOA of the entity to be adjusted'.

TSTPS-I, Kaniha (2x500 MW), is a central Generating Station, situated near Talcher, Odisha. The said Generating Station has dual connectivity, i.e., both STU and CTU.

GRIDCO has intimated Member Secretary, ERPC vide letter No. CGM-PP-128/2020/617(4) dated 20.06.2022 that the said CGS has completed its life span of 25 years as on 30.06.2022 and GRIDCO intends to draw its share through STU network with effect from 01.07.2022. Copy of this letter is also forwarded to CTU.

Moreover, OPTCL vide letter No. 270 dated 24.06.2022 has intimated CTU that OPTCL has conducted Load Flow study and intimated that existing STU Network is adequate enough to evacuate the State share of power.

In line with the above Regulations 13(11) and Clause 6.5, CTU is to adjust the LTA **(300.64 MW)**, so that, **Odisha shall not pay any ISTS charges for drawal of its share from TSTPS-I.**

GRIDCO has not received any response from CTU so far In spite of letters dated 17.08.2022 and dated 21.09.2022.

CTU vide letter dated 07th July 2022 (Annexure B2), informed that the methodology with regard to ascertaining the adequacy of Intra-State (In-STS) network to evacuate state's share from a generating station connected to both In-STS and ISTS, as agreed in 39th meeting of SRPC, the primary condition is that the In-STS network planned and implemented for the evacuation of the concerned Central Generating Station (CGS) only to be considered. In the instant case, the evacuation system for entire Talcher (TSTPS) Stage-I (2x500MW) generation was planned only through ISTS lines viz. Talcher — Rourkela and Talcher — Rengali 400kV D/c lines. The instant case doesn't fit into the category of CGS connected to both ISTS and In-STS for power evacuation, and accordingly LTA quantum of Odisha from Talcher (TSTPS) Stage-I cannot be recommended for exemption of ISTS charges and losses.

GRIDCO may explain. CTU may respond.

ITEM NO. B.3: Upgradation of OPGW network in DVC for strengthening and redundancy of communication network in DVC sector: Powergrid

DVC intends for strengthening of communication network of DVC through laying of OPGW based communication system for following major purposes:

- a) In the present communication network of DVC, there are some nodes having single connectivity. For redundant connectivity, OPGW connectivity for the stations is to be established in redundant paths.
- b) Strengthening of the existing communication network will enable reliable real-time data transfer for smooth grid operations.
- c) OPGW connectivity is required for establishment of DTPC in some lines.

Following is the list of links where OPGW laying along with terminal equipment is proposed:

S/n	Name of Link	Voltage Level	Approx. Length(Km)
1	BokaroA-Koderma	400kV	105
2	Dhanbad-Patherdih	132kV	22
3	CTPS-Kalyaneswari LILO at RTPS	220kV	125
4	Parulia-Bardhaman	220kV	90
5	DTPS-Parulia (LILO at DSPTS) LILO part (48F)	220kV	8
6	BokaroA-Jamshedpur (DVC)	220kV	155
7	Joda- Jamshedpur(DVC)	220kV	140
8	MejiaA-Ramgarh220	220kV	155
9	BTPSA-BTPSB (UGFO)	UG	5
Total			805

Further details are attached at **Annexure B3**.

DVC intends to execute the implementation of OPGW laying in the above-mentioned links of total 805 Km through Powergrid.

Powergrid is agree to execute the OPGW laying in the above-mentioned links of total 805 Km on tariff route (RTM Mechanism). Estimated cost for this work will be approx. 32 Crs. Powergrid will fund the project and the cost will be recovered through tariff as decided by CERC as per earlier ULDC schemes.

12th TeST Committee agreed to the proposal of Powergrid and referred it to CCM for further concurrence.

Powergrid may explain. Members may discuss.

ITEM NO. B.4: Proposal for Renewal of AMR Phase-3 AMC of 249 nos. of SEM in ER.

The original LOA for AMR phase-3 was awarded to M/S TCS in Oct-2016. Scope was Supply, Installation, Commissioning of AMR system with one year warranty and 4 years comprehensive AMC. The total Qty. of SEM considered in this scope was: 249. (Details of Substations for the 249 SEM are given in **Annexure B4**).

Supply, Installation and One year warranty was completed in Aug-2018, and from 01-Sep-2018 AMC was started. 04 years comprehensive AMC has been completed on 31-Aug-2022. From 01- Sep-2022 onwards, all these 249 SEM Meters are out of AMC support.

Renewal of AMC support is required to continue the AMR operation and ensure SEM data availability to ERLDC for weekly billing. Under proposed AMC period, it is envisaged up to the period of March-2026, such that AMC of Phase-3 could be concurrent with Phase-1/2.

The AMC renewal will be from 01-Sep-2022 till 31-Mar-2026 (43 months). Being OEM the AMC support required to be placed to M/S. TCS only on ST basis. As per budgetary offer the AMC value comes to around Rs. 1.24 Cr (Excluding GST) for 249 SEM for 43 Month time period.

M/S TCS is continuing the AMC support now, and we requested them to continue the AMC support also till finalization of the proposed AMC. Members may please discuss.

In the 195th OCC Meeting, Powergrid representative submitted that M/s TCS has submitted a cost estimate of Rs. 1.24 Crores for the renewal of AMC of Phase-3 AMR of 249 nos. of SEMs. The AMC period will be from 01-Sep-2022 till 31-Mar-2026 i.e., for 43 months such that AMC of Phase-3 could be concurrent with Phase-1 & 2. They are in the process of negotiation with M/s TCS for further reduction of AMC cost of phase-3.

Also, the AMC of 254 meters (Phase-4) which is valid up to June 2026 would be preponed to March 2026 so that AMC of all the phases could be started afresh concurrently.

OCC agreed to the above proposal and referred it to the CCM meeting for further approval.

Powergrid may update. Members may discuss.

ITEM NO. B.5: Procurement of New Energy Meter:

In Eastern Region, no of spare meters as informed by PGCIL is around 410 nos. Keeping in view of the upcoming requirement of meters in new projects and replacement of heavily time drifted (L&T make) meters, members may discuss the requirement of new energy meters.

Member may discuss.

ITEM NO. B.6: Issuance of trial run certificate of 3x80 MVAR Line Reactor of 765kV Gaya-Balia Line at Gaya SS.:

In reference to above, the request for issuance of trial run certificate of following assets was submitted to ERLDC on dated 19.03.2015:

- i) 765kV Gaya-Balia Line **along with 3x80MVAR Line Reactor** at Gaya end: Trail Operation period from 00:47 hrs. of 06.01.2015 to 00:47 hrs. of 07.01.2015.

Subsequently, Certificate of Completion of Trial operation was issued by NLDC on dated 31.03.2016 (**Annexure B6**). However, in the issued certificate, the asset was mentioned as only 765kV Gaya-Balia line in place of 765 kV Gaya-Balia Line **along with 3x80 MVAR Line Reactor at Gaya**. Trial run certificate of 3x80MVAR Line Reactor is also required to be

submitted to CERC for tariff finalization. In this regard, issuance of corrigendum/ clarification on issued certificate is requested through letter dated 06.09.2022 & mail communication dated 25.07.2022.

Necessary corrigendum/clarification in issued trial operation certificate may kindly be issued for onward submission to CERC. The relevant communications and documents in this regard is enclosed for reference.

Powergrid may explain. ERLDC may respond.

ITEM NO. B.7: Payment of ERLDC Fees and Charges by Constituents:

ERLDC is raising monthly fees and charges bill to constituents on every month as per CERC order no 399/MP/2019. Majority of the constituents are paying ERLDC fees and charges on time. Presently, Sikkim have Pending bills from Aug-22.

ERLDC may explain. Sikkim may update.

ITEM NO. B.8: Opening of LC by ER constituents for DSM payments

Clause 10 (4) of CERC Deviation Settlement Mechanism and related matters Regulations, 2014 vide notification No. L-1/132/2013/CERC dated 6th January, 2014 to be implemented from 17.02.2014 is reproduced below:

Quote....

All regional entities which had at any time during the previous financial year failed to make payment of Charges for Deviation including Additional Deviation Charges for Deviation within the time specified in this regulations shall be required to open a Letter of Credit (LC) equal to 110% of its average payable weekly liability for Deviations in the previous financial year, in favour of the concerned RLDC within a fortnight from the date these Regulations come into force.....

.....Provided further that LC amount shall be increased to 110% of the payable weekly liability in any week during the year, if it exceeds the previous LC amount by more than 50%.

....Unquote

The details of LC amount required to be opened in 2021-22 by ER constituents is given in **Annexure – B8**. Letters to this effect was issued by ERLDC to the defaulting entities.

ERLDC has intimated to all the defaulting entities vide letter dated 11.04.2022.

In 46th TCC meeting, TCC requested defaulting constituents to open their requisite LC as per prevailing CERC DSM Regulation'2014.

At present there is no valid LC i.r.o SIKKIM, APNRL, Gati HEP, GMR, JITPL, Tashiding, PGCIL(ER-II), Rongnichu, Jorethang.

However, in 46th TCC meeting JITPL informed that they are unable to open LC due to restriction by bank.

Opening of LC is the regulatory requirement as per provision of CERC DSM regulations for defaulting members. Defaulting members may please intimate the latest status of opening of LC.

ITEM NO. B.9: Payment of Deviation Charge – Present Status.

A. Payment of Deviation Charge – Present Status

Deviation Pool Account Fund of ER is being maintained & operated by ERLDC, in accordance with the CERC Regulations. As per Regulations 10 (1) of “Deviation Settlement Mechanism and related matters” the payment of charges for Deviation shall have a high priority and the concerned constituents shall pay the indicated amounts within 10 days of issue of statement of Charges for Deviation including Additional Charges for Deviation by the Secretariat of the respective Regional Power Committee in to the “Regional Deviation Pool Account Fund” of the concern region.

The status of Deviation Charge payment as on 01.11.2022 is enclosed at **Annexure – B9.A**. The current principal outstanding Deviation Charge of BSPHCL, JUVNL and SIKKIM is ₹ 104.92 Cr, ₹ 107.12 Cr, & ₹ 5.55 Cr respectively considering bill up to 16.10.2022. ERLDC is regularly giving reminders to BSPHCL, JUVNL & SIKKIM and others defaulting entity to liquidate the outstanding Deviation charges.

BSPHCL, JUVNL, & SIKKIM may confirm the program for payment of outstanding dues.

B. Interest due to delayed payment of deviation charges/RRAS

Due to delayed payment of deviation charges in DSM Pool interest was computed for all the DSM Pool Members for FY 2020-21. The statement of interest amount as on 28.06.21 is enclosed in **Annexure-B9.B**.

Constituents, who are in payable mode, may please confirm the program for payment of Interest.

C. Reactive Energy Charges – Present Status.

The status of Reactive Energy Charges in the pool as on 01.11.2022 considering bill up to 16.10.2022 is indicated in **Annexure – B9.C**. The total outstanding receivable on account of Reactive charges from Bihar, JUVNL & Gridco is ₹ 0.46 Cr, ₹ 4.03 Cr & 0.28 Cr respectively.

Bihar, JUVNL & Gridco may confirm the program for payment of outstanding dues.

ITEM NO. B.10: Reconciliation of Pool accounts

I. Deviation Account

At the end of 1st quarter of 2022-23, the reconciliation statement (Period: 01.04.22 to 30.06.22) has been issued by ERLDC on 15.07.22 and statements had been sent to the respective

constituents and also uploaded the same at ERLDC website at <https://erldc.in/market-operation/dsmreconciliation/>. The constituents were requested to verify /check the same & comment (if any) to ERLDC at the earliest. The status of reconciliation is enclosed in **Annexure-B10.1**.

Constituents are requested to update the status of reconciliation.

II. Reactive Account

At the end of 1st quarter of 2022-23, the reconciliation statement (Period: 01.04.22 to 30.06.22) has been issued by ERLDC on 15.07.22 and statements had been sent to the respective constituents and also uploaded the same at ERLDC website at link <https://erldc.in/market-operation/reactivereconciliation/>. Constituents were requested to verify /check the same & comments if any to be reported to ERLDC. The status of reconciliation is enclosed in **Annexure-B10.2**.

Constituents are requested to update the status of reconciliation.

III. RRAS & AGC Account

At the end of 1st quarter of 2022-23, the reconciliation statement (Period: 01.04.22 to 30.06.22) has been issued by ERLDC on 15.07.22 and statements had been sent to the respective constituents and also uploaded the same at ERLDC website at link <https://erldc.in/market-operation/rrasreconciliation/>.

The status of reconciliation is enclosed in **Annexure-B10.2**.

Constituents are requested to update the status of reconciliation.

IV. Short Term Open Access

a. For STOA payments made to SLDC / STU:

The reconciliation statements of STOA payments of Q-2 for FY 22-23 have been sent to the DVC, OPTCL, BSPTCL, Jharkhand and WBSETCL on dated 26.10.2022.

The status of reconciliation is enclosed in **Annexure-B10.3**.

Constituents are requested to update the status of reconciliation.

b. For Payments made to STOA Applicants:

The reconciliation statements of STOA payments for the period of Q2 for FY 22-23 have been sent to the JBVNL, JITPL, GRIDCO and WBSEDCL on dated 26.10.2022.

The status of reconciliation is enclosed in **Annexure-B10.3**.

Constituents are requested to update the status of reconciliation.

ITEM NO. B.11: Agenda by Powergrid/CTUIL

a) Non-Opening of requisite amount of LC:

- (i) Following constituents are required to enhance/ extend LC towards Payment Security Mechanism, as per CERC Regulations and Annexure-8 of 8.2 of Para 8.0 of BCD Procedure:

Amount (in Cr.)

SI. No	Name of DIC's	Present Value of LC	Value of LC Required
(i)	North Bihar Power Distribution Company Limited (NBPDCCL)	9.73	79.99
(ii)	South Bihar Power Distribution Company Limited (SBPDCL)	15.27	93.91
(iii)	Jharkhand Bidyut Vitran Nigam Ltd (JBVNL)	11.52	27.42
(iv)	East Central Railway (ECR)	--	42.49
(v)	Sikkim	--	3.33

- Letter of Credit (LC) to be opened in favour of **CTUIL** for **POC Bills & POWERGRID** towards **Non-POC** Bills.

Respective DIC's may update.

b) Payment of outstanding dues more than 45 days.

SI. No	Name of DIC's	Total Outstanding dues	Outstanding due more than 45 days	Remarks
(i)	South Bihar Power Distribution Company Limited (NBPDCCL)	330.45	92.62	-
(ii)	Jharkhand Bijli Vitran Nigam Limited (JBVNL)	66.17	29.08	-
(iii)	North Bihar Power Distribution Company Limited (NBPDCCL)	288.81	88.62	-
(iv)	West Bengal State Electricity Distribution Company Ltd. (WBSEDCL)	264.69	1.20	Not Admitted
(v)	Ind-Barath Energy (Utkal)	220.54	220.54	Matter in

	Limited			NCLT
(vi)	Teesta Valley Power Transmission Ltd (TPTL)	2.01	2.01	Matter in APTEL
(vii)	Teesta Urja Limited (TUL)	4.81	4.81	Matter in APTEL
(viii)	Jharkhand Urja Sancharan Nigam Limited (JUSNL)	28.28	27.29	Matter in APTEL
(ix)	Odisha Power Generation Company Limited (OPGCL)	10.67	10.67	Matter in APTEL
(x)	Odisha Power Transmission Company Limited (OPTCL)	55.24	55.24	Matter in Hon'ble Supreme Court
	Total	1271.67	532.08	

Remarks of above:

- (i) The outstanding still pertaining to WBSEDCL (Bill # 4 @ Rs. 1.20 Cr). WBSEDCL has not admitted Rs. 1.20 Cr towards Bill # 4 long pending outstanding.

This is for information to members.

c) Non – Payment of RTDA bills.

The following DIC's have not paying RTDA bills:

SI. No	Name of DIC's	Outstanding dues	Remarks
(i)	West Bengal State Electricity Distribution Company Ltd. (WBSEDCL)	1.20 Cr.	Payment of Rs. 1.79 Cr. has been made by WBSEDCL against RTDA bills. However, The outstanding dues of Rs. 1.20 Cr. against RTDA bills is still pending to WBSEDCL despite of several follow up regarding this.

PART C: ITEMS FOR INFORMATION

ITEM NO. C.1: New regulations/Orders of MoP/CEA/CERC

1. Central Electricity Regulatory Commission (Indian Electricity Grid Code) Regulations, 2022

CERC vide notification dated 07.06.2022 had circulated Draft Central electricity Regulatory Commission (Indian Electricity Grid Code) Regulation'2022 and requested to furnish the comments/ suggestions/objections from the stakeholders and interested persons on the above Draft Regulations on or before 31st August'2022. All the member constituents are requested to go through the draft regulation and furnish the comments/suggestions.

2. Central Electricity Regulatory Commission (Connectivity and General Network Access to the Inter State Transmission System) Regulations, 2022

CERC vide notification dated 07.06.2022 had issued Central Electricity Regulatory Commission (Connectivity and General Network Access to the inter-State Transmission System) Regulations, 2022.

- a) The GNA Regulations shall come into operation with effect from 15.10.2022 except the provisions of Regulations 23 to 24, 26 to 36, 37.9, 38, 40, and 43, whose date of commencement shall be notified separately.
- b) Fresh Applications for Connectivity and GNA and their processing and grant under GNA Regulations shall be made effective from a date to be notified separately.
- c) Scheduling and Despatch of electricity shall continue to be based on the quantum of Long-Term Access (LTA), Medium-Term Open Access (MTOA) and Short-Term Open Access (STOA) of each of the Designated ISTS Customers (DICs) and other users of the grid in accordance with the provisions of the Central Electricity Regulatory Commission (Indian Electricity Grid Code) Regulations, 2010, as amended from time to time, till further notification.
- d) STOA shall continue to be granted under the Central Electricity Regulatory Commission (Open Access in inter-State transmission) Regulations, 2008, as amended from time to time and the Detailed Procedures issued thereunder, till further notification.
- e) Billing, Collection and Disbursement of the inter-State Transmission Charges and Losses shall continue to be based on the quantum of LongTerm Access (LTA), Medium-Term Open Access (MTOA) and Short-Term Open Access (STOA) of each of the DICs and other users of the grid in accordance with the provisions of the Central Electricity Regulatory Commission (Sharing of inter-State Transmission Charges and Losses) Regulations, 2020 till further notification.

Members may note.

ITEM NO. C.2: List of Assets commissioned during April'22 to September'22 of Eastern Region (ER)

A	ERSS-XXIII	DOCO	Remarks	Region
1	LILO of both Circuits of Kishenganj (POWERGRID)-Darbhanga (DMTCL) 400 kV D/c (Quad) line at Saharsa-New (POWERGRID)	28-04-2022	DOCO Letter Dtd. 29.04.2022	ER-I
2	400 kV Line Bays: 4 Nos. (for termination of LILO of both circuits of Kishenganj (POWERGRID)-Darbhanga (DMTCL) 400 kV D/c line at Saharsa-New"	28-04-2022	DOCO Letter Dtd. 29.04.2022	ER-I
3	(A). Transformer Bays:- i. 01 no. 400 kV ICT bay in AIS ii. 01 no. 220kV ICT bay in GIS, (B) 500 MVA, 400/200 kV transformer (4th ICT): 1 no. (C) 220 kV Cable from ICT to GIS bay” at Muzaffarpur (POWERGRID) 400/220 kV S/s.	08-04-2022	DOCO Letter Dtd. 20.04.2022	ER-I
B	Transmission System for development of pooling station in Northern part of West Bengal and transfer of POWER from Bhutan to NR/WR	DOCO	Remarks	Region
1	400 kV D/C Punatsangchu-Alipurduar Transmission Line (Indian Portion) along with 02 nos. associated line bays at Alipurduar Substation.	03-07-2019	DOCO Letter Dtd. 20.04.2022	ER-II
C	ERSS-XII	DOCO	Remarks	Region
1	Installation of 01 no 315 MVA,400/220 kV ICT at Farakka SS along with associated bays	25-04-2022	DOCO Letter Dtd. 16.06.2022	ER-II

D	ERSS-VIII	DOCO	Remarks	Region
1	02 Nos 400 kV line bays at Subhashgram for termination of Jerrat (New)-Subhashgram 400 kV D/C (ACSR Quad Moose) line under TBCB	26-08-2022	DOCO Letter Dtd. 30.08.2022	ER-II
2	02 Nos 220 kV Line bays at Subhashgram S/S	27-04-2015	DOCO Letter Dtd. 29.09.2022	ER-II

Members may note.

ITEM NO. C.3: Eastern Region Pool Account Status

A. RRAS Account ----Present Status.

The updated position of Payments to the RRAS Provider(s) from the DSM pool and Payments by the RRAS Provider(s) to the DSM pool as of 01.11.2022 (considering bill up to 16.10.2022) is indicated in **Annexure – C3.1**. Total receivable by the pool is ₹124.86 Cr and the total payable by the pool is ₹ **192.12 Cr**.

This is for information to the members.

B. AGC Account ----Present Status.

The updated position of Payments to the AGC Provider(s) from the DSM pool and Payments by the AGC Provider(s) to the DSM pool as on 01.11.2022 (considering bill up to 16.10.2022) is indicated in **Annexure – C3.1**. Total receivable by the pool is ₹**94.65 Cr** and the total payable by the pool is ₹ **5.61 Cr** as of 01.11.2022 (considering bill up to 16.10.2022).

This is for information to the members.

C. Status of PSDF

An amount of total ₹ **38.41 Cr** from Reactive account (**12.87 Cr.**) & DSM Account (**25.54 Cr.**) has been transferred to PSDF after 46th Commercial sub-committee meeting held on 06.07.2022. With this the total amount of ₹ **1903.1 Cr** has been transferred to PSDF so far. The breakup details of fund transferred to PSDF (till 01.11.22) is enclosed in **Annexure C3.2**.

This is for information to the members.

सेंट्रल ट्रांसमिशन यूटिलिटी ऑफ इंडिया लिमिटेड

(पावर ग्रिड कॉर्पोरेशन ऑफ इंडिया लिमिटेड के स्वामित्व में)

(भारत सरकार का उदयम)

CENTRAL TRANSMISSION UTILITY OF INDIA LTD.

(A wholly owned subsidiary of Power Grid Corporation of India Limited)

(A Government of India Enterprise)

Ref.: CTU/E/07/Talcher St-I

07th July 2022

Chief General Manager (CGM)

Corporate Planning

Odisha Power Transmission Corporation Ltd.

Janpath, Bhubaneswar-751022

Sub: Reduction of Odisha LTA of 300.64MW from Talcher St-1 – Reg.

Ref: (1) OPTCL's letter no. CP-CTU-55/2022/270 dated 24-06-2022

(2) GRIDCO's letter no. CGM-PP-128/2020/617(4) dated 20-06-2022 addressed to MS, ERPC

Dear Sir,

This is with reference to letter (1) of OPTCL enclosing therewith letter (2) of GRIDCO, requesting therein to reduce Odisha's share of 300.64MW from Talcher (TSTPS) Stage-I from ISTS charges and losses calculation in line with provision of Regulation 13 (11) of CERC Sharing Regulations, 2020.

In this regard it is to mention that in the methodology with regard to ascertaining the adequacy of Intra-State (In-STS) network to evacuate state's share from a generating station connected to both In-STS and ISTS, as agreed in 39th meeting of SRPC, the primary condition is that the In-STS network planned and implemented for the evacuation of the concerned Central Generating Station (CGS) only to be considered. In the instant case, the evacuation system for entire Talcher (TSTPS) Stage-I (2x500MW) generation was planned only through ISTS lines viz. Talcher – Rourkela and Talcher – Rengali 400kV D/c lines.

From the above it can be inferred that the instant case doesn't fit into the category of CGS connected to both ISTS and In-STS for power evacuation, and accordingly the LTA/ deemed LTA quantum of Odisha from Talcher (TSTPS) Stage-I cannot be recommended for exemption of ISTS charges and losses. We hope above clarifies the matter.

Thanking you,

Yours faithfully,



07/07/22

(Jasbir Singh)

Chief General Manager

Copy to:

Member Secretary Eastern Regional Power Committee 14, Golf Club Road, Tollygunge Kolkata-700033	Executive Director National Load Dispatch Centre POSOCO 61, IFCI Tower, 8 th & 9 th Floor, Nehru Place, New Delhi-110019
Executive Director Eastern Regional Load Despatch Centre 14, Golf Club Road, Jubilee Park, Golf Gardens, Tollygunge, Kolkata, West Bengal - 700095	



GRIDCO LIMITED

(A Govt. of Odisha Undertaking)
(Formerly Grid Corporation of Orissa Limited)
Regd. Office: Janpath, Bhubaneswar-751022
CIN:L40109OR1995SGC003960

820 (7)

(Through E.mail)

No.CGM-PP-170/2021/

Date: 17/8/22

To

The Deputy COO,
Central Transmission Utility (CTU),
Near IFFCO Chowk, Plot No-2, Sector-29,
Gurgaon, (Haryana) - 122001
E.mail: ashok@powergrid.in

Sub: Reduction of Odisha LTA of 300.64 MW from Talcher St.1 – Reg.

Ref: 1. Letter No. CTU/E/07/ Talcher St-1 dated 07.07.2022 addressed to CGM (CP), OPTCL
2. OPTCL's letter no. CP-CTU-55/2022/270 dated 24.06.2022, addressed to Deputy COO, CTU, New Delhi
3. GRIDCO's letter no. CGM-PP-128/2020/617(4) dated 20.06.2022 addressed to Member Secy. ERPC

Sir,

In inviting reference to the above cited subject, it is to intimate you that, as per Regulations 13 (11) of CERC (Sharing of Inter State Transmission Charges and Losses) Regulations, 2020:

'Where a generating station is connected to both ISTS and intra-State transmission system, only ISTS charges and losses shall be applicable on the quantum of Long Term Access and Medium Term Open Access corresponding to capacity connected to ISTS.'

Further as per Clause 6.5 of 'Procedure for Computation and sharing of Inter-State Transmission System Charges' in compliance of CERC (Sharing of Inter State Transmission Charges and Losses) Regulations, 2020:

'Where a generating station is connected to both ISTS and intra-State transmission system, only ISTS charges and losses shall be applicable on the quantum of Long Term Access and Medium Term Open Access corresponding to capacity connected to ISTS. Accordingly, LTA/MTOA of the entity to be adjusted.'

From the above, it is understood that the Long Term Access (300.64 MW) of Odisha from TSTPS-I, is to be adjusted by CTU so that, Odisha shall not pay any ISTS charges for drawal of its share from TSTPS-I.

The primary condition regarding planning of STU network for evacuation, as specified by CTU vide letter under reference (1), has no relevance with the Regulations 13(11) and Clause 6.5 of the procedure, mentioned above.

GRIDCO has intimated Member Secretary, ERPC vide letter under reference (3), that the said CGS has completed its life span of 25 years as on 30.06.2022 and GRIDCO intends to draw its share of 300.64 MW through STU network with effect from 01.07.2022. Copy of this letter has also been forwarded to CTU.

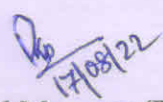
Moreover, as per the letter under reference (2), OPTCL has conducted Load Flow study and intimated that existing STU Network is adequate enough to evacuate the State share of power.

Analysing the above circumstances, it can be concluded that although the CGS is situated well within the State of Odisha, and State Power is drawn through STU network, still Odisha has to bear the **CTU Charges and CTU Losses**, as well which is more than **12 Crore per Month**. It is a gross injustice being done to the consumers of the State of Odisha.

In view of the above, it once again requested to consider the case and reduce the LTA of Odisha by 300.64 MW with effect from 01.07.2022. Copies of the letters under reference (1), (2) & (3) are enclosed for ready reference.

Yours faithfully,

Encl: As above.


Chief General Manager (PP)

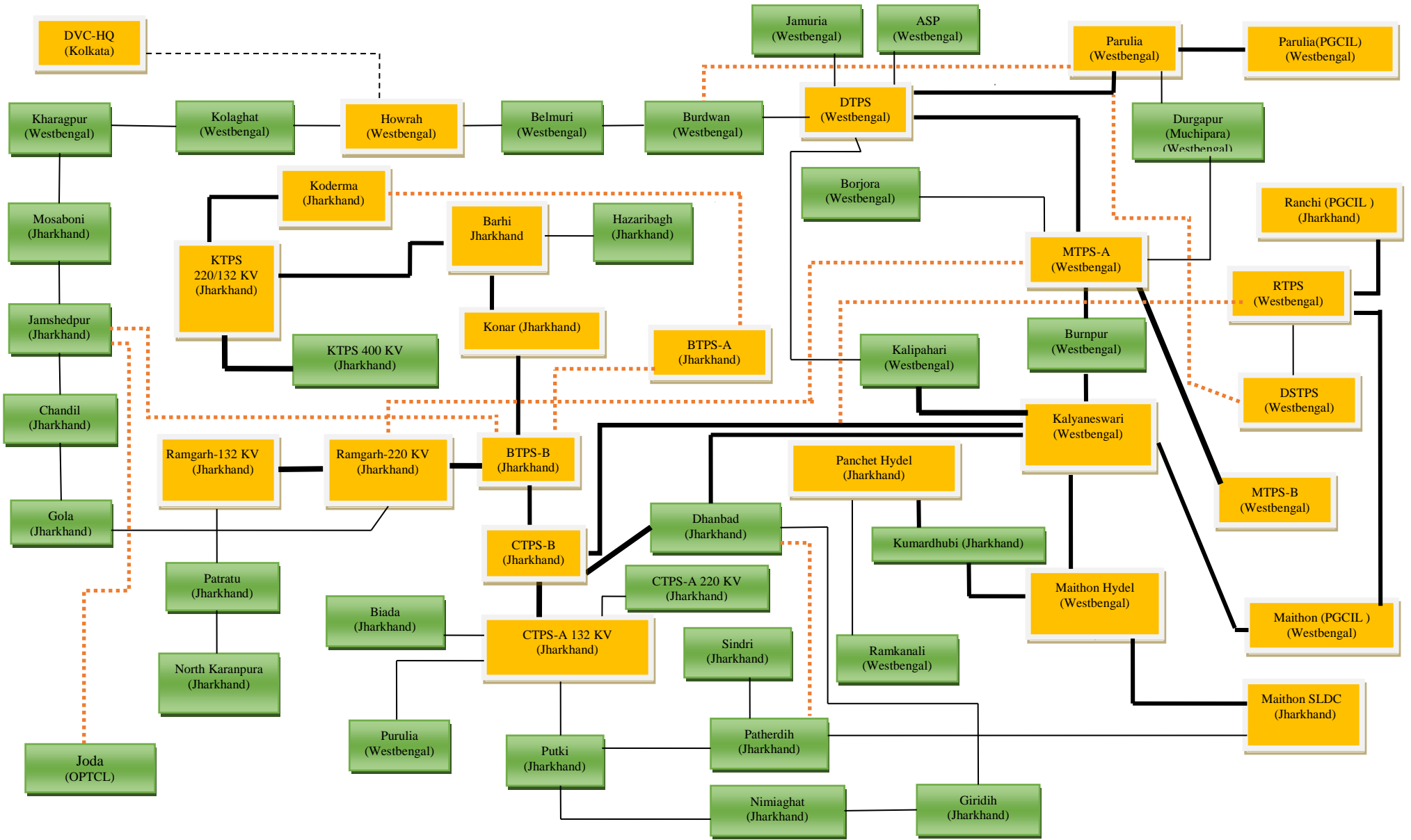
C.C to

1. The Member Secy. ERPC, Kolkata for kind information.
2. E.D. ERLDC, Kolkata, for information
3. Director (Operation), OPTCL for information.
4. Director (Finance), GRIDCO for information
5. CGM (CP), OPTCL for information
6. Sr.P.S. to M.D. GRIDCO for information of MD, GRIDCO

Proposed List of links for OPGW laying in DVC Sector for redundancy & strengthening of communication network of DVC

S/n	Name of Link	Voltage Level	Approx. Length (Km)	Remarks
1	BokaroA-Koderma	400KV	105	Redundant connectivity for both BokaroA & Koderma
2	Dhanbad-Patherdih	132KV	22	For better redundancy of Dhanbad with SLDC, implementation of DTPC & strengthening of communication network.
3	CTPS-Kalyaneshwary LILO at RTPS	220KV	125	For redundant connectivity of RTPS & implementation of DTPC
4	Parulia-Bardhaman	220KV	90	For redundant connectivity of Parulia
5	DTPS-Parulia (LILO at DSPTS) LILO part (48F)	220KV	8	For redundant connectivity of DSTPS
6	BokaroB-Jamshedpur (DVC)	220KV	155	For better redundancy of Jamshedpur & strengthening of communication network. DVC-OPTCL connectivity.
7	Joda-Jamshedpur(DVC)	400KV	140	DVC-OPTCL connectivity, implementation of DTPC & strengthening of communication network.
8	MejiaA-Ramgarh220	220KV	155	For redundant connectivity of Ramgarh, implementation of DTPC & Strengthening of communication network.
9	BTPSA-BTPSB (UGFO)	UG	5	For redundant connectivity of BTPS-A
	Total		805	

Proposed List of links for OPGW laying in DVC Sector for redundancy & strengthening of communication network of DVC



Existing Network (ULDC)
 Leased Overhead Fibre hiring from Meghbala Broadband
 Proposed links for implementation

Commtel MUX ECI MUX

Annexure-B.4

List of Sub Stations, associated with AMR Phase-3 project for 249 number of SEM integration with AMR.

Utility Name	Substation Name	SEM Count
BIHAR	BANKA(BAN)	1
BIHAR	JAMUI(BSPHCL)	2
BIHAR	KUDRA(KUD)	1
BIHAR	LAKHISARAI(LKK)	2
BIHAR	NALANDA(NLN)	1
BIHAR	NEW PUSAULI(NPS)	2
BIHAR	SABOUR(SBR)	3
BIHAR	SONNAGAR NEW	1
BIHAR	SULTANGANJ(SUL)	3
CESC	HALDIA(HAL)	2
WEST BENGAL	KHARAGPUR (KSG)	2
WEST BENGAL	PPSP NEW	2
JHARKHAND	CHAIBASA(CHA)	2
JHARKHAND	DUMKA(DUM)	2
JHARKHAND	KENDOPOS(KEN)	1
GRIDCO	BANGRIPOSHI	1
GRIDCO	KATAPALLI(KTP)	1
GRIDCO	MENDHASAL(MEN)	1
GRIDCO	NEW DUBRI(DBR)	2
GRIDCO	SADEIPALI	1
DVC	RTPS(RTP)	4
NTPC	DARLIPALLI	4
NTPC	NABINAGAR	5
NTPC	TALCHER SOLAR(TLS)	12
NHPC	RANGIT(RGT)	5
IPP	ADHUNIK(APNRL)	2
IPP	DIKCHU	9
IPP	JORTHANG	6
POWERGRID	ANGUL	16
POWERGRID	ARAH(ARP)	4
POWERGRID	BANKA(BNK)	13
POWERGRID	BARIPADA(BPD)	2

POWERGRID	BERHAMPORE(BMP)	2
POWERGRID	BOLANGIR(BLR)	3
POWERGRID	CHAIBASA	7
NTPC	FARAKKA	2
POWERGRID	GAYA(GYA)	4
POWERGRID	JAMSHEDPUR(JSR)	3
POWERGRID	KISHANGANJ(KGN)	12
POWERGRID	MAITHON(MTN)	4
POWERGRID	MALDA(MLP)	2
POWERGRID	MUZAFARPUR(MZP)	7
POWERGRID	NEW MELLI	2
POWERGRID	PANDIABIL(PNB)	9
POWERGRID	PATNA(PAT)	1
POWERGRID	PUSAUL	3
POWERGRID	RANCHI NEW	14
POWERGRID	RANGPO(RGP)	19
IPP	IND BHARAT	6
POWERGRID	SUNDERGARH(SND)	7
DMTCL	DARBHANGA	13
DMTCL	MOTIHARI	14

पावर ग्रिड कॉर्पोरेशन ऑफ इंडिया लिमिटेड
(भारत सरकार का उद्यम)
POWER GRID CORPORATION OF INDIA LIMITED
(A Government of India Enterprise)



पूर्वी क्षेत्र-1 क्षेत्रीय मुख्यालय: बोर्ड कॉलोनी, शास्त्री नगर, पटना-800023(बिहार) दूरभाष : 0612-2283002
Easter Region-IRHQ: Board Colony, Shastri Nagar, Patna-800023(Bihar), Tel.: 0612-2283002

Ref: ER-1/PAT/AM/126

1888

Date: 06.09.2022

To,
General Manager (SO)
ERLDC, Kolkata

Sub: Issuance of Trial run certificate of 240MVAR Line Reactor of 765kV Gaya-Balia Line at Gaya SS.

Sir,

This has reference to the request for issuance of trial run certificate of following assets, submitted to ERLDC along with relevant documents vide format-V dtd. 19.03.2015:

- i) 765kV Gaya Balia Line along with 3X80 MVAR Line Reactor at Gaya end: Trial operation period from 00:47 hrs of 06.01.2015 to 00:47 hrs. of 07.01.2015.

In response to the request for trial operation certificate, TOC was issued by NLDC on dtd. 31.03.2016, however in the issued certificate, the asset was mentioned as only 765kV Gaya Balia Line in place of 765kV Gaya Balia Line along with 3X80 MVAR Line Reactor. Recently we had received a communication from our Commercial department regarding requirement of Trial operation certificate for 3X80 MVAR Gaya-Balia Line Reactor for submission to CERC. Further the request was sent to ERLDC vide our email dtd. 25.07.2022 for issuance of corrigendum or clarification on the issued certificate.

It is requested that matter may be examined at your end and necessary clarification/ corrigendum in issued trial operation certificate may kindly be issued for onward submission to CERC. The relevant communications and documents in this regard is enclosed for reference.

Thanking you.

CC: ED/ERLDC - for kind information

(S.K. Singh)
(S.K. Singh)
CGM-AM, ER1

पावर सिस्टम ऑपरेशन कॉरपोरेशन लिमिटेड

(पावरग्रिड की पूर्ण स्वामित्व प्राप्त सहायक कंपनी)

POWER SYSTEM OPERATION CORPORATION LIMITED

(A wholly owned subsidiary of POWERGRID)



पंजीकृत एवं केन्द्रीय कार्यालय: बी-9, प्रथम तल, कुतुब इंस्टीट्यूशनल एरिया, कटवारिया सराय, नई दिल्ली-110 016
Registered & Corporate Office : B - 9, 1st Floor, Qutub Institutional Area, Katwaria Sarai, New Delhi - 110 016
Website : www.posoco.in, www.nldc.in, Tel: 011-26536832, 26524522, Fax: 011-26524525, 26536901

Certificate Number: POSOCO/NLDC/SO/14

Date: 31st March 2016

Certificate of completion of Trial Operation of Transmission Element

References:

- i) ERTS1, POWERGRID Application/Email dated 18th Dec 2014 regarding submission of pre charging documents
- ii) NRTS1, POWERGRID Application/Email dated 05th January 2015 regarding submission of pre charging documents
- iii) ERTS1, POWERGRID Application/Email dated 18th Mar 2015 regarding submission of post charging documents
- iv) NRTS1, POWERGRID Application/Email dated 30th Mar 2016 regarding submission of post charging documents
- v) NRTS1, POWERGRID Application/Email dated 31st Mar 2016 regarding submission of corrected post charging documents

Based on the above references, it is hereby certified that the following Transmission element has successfully completed the trial operation:

Name of the Transmission Asset:	765 kV Gaya-Balia
Owner of the Transmission Asset :	Power Grid Corporation of India Limited
Date and Time of Energization for commencement of successful trial run operation	06.01.2015 / 00:47
Date/time of completion of successful trial run operation	07.01.2015 / 00:47

This certificate is being issued in accordance with Regulation 5 of CERC (Terms and Condition of Tariff) Regulations, 2014 to certify successful completion of trial operation of transmission element. Usage of this certificate for any other purpose is prohibited.


N Nallarasani 31/3/16
DGM, System Operation
NLDC

Place: New Delhi

Copy to:

- I. Executive Director, NRTS-1, POWERGRID
- II. Executive Director, ERTS-1, POWERGRID
- III. Member Secretary, NRPC
- IV. Member Secretary, ERPC
- V. General Manager, ERLDC
- VI. Executive Director, NRLDC

स्वहित एवं राष्ट्रहित में ऊर्जा बचाएं
Save Energy for Benefit of Self and Nation

Current Status of Letter of Credit (LC) amount against DSM charges for ER constituents*Figures in Lacs of Rupees*

SI No	ER Constituents	No. of weeks in which Deviation Charge payable	No of times payment was delayed during 2021-22	Total Deviation charges payable to pool during 2021-22	Average weekly Deviation Charge liability	LC Amount	Defaulting Weeks	Due date of expiry	Remarks
					(C)/52 weeks				
		(A)	(B)	(C)	(D)	(E)	(G)	(F)	(G)
1	Bihar State Power Holding Corporation Limited / बिहार	41	41	21320.74	410.01	451.01566	All Weeks	13-11-2022	LC opened for Rs. 213,53,049 /-
2	Jharkhand State Electricity Board / झारखंड	44	44	7539.19	144.98	159.48276	All Weeks	22-11-2022	LC opened for Rs. 68,73,783 /-
3	SLDC - UI FUND - WBSETCL / पश्चिम बंगाल	49	2	11830.03	227.50	250.25055	Week-4, 40	14-08-2023	LC opened for Rs. 2,50,25,055 /-
4	Power Deptt, Govt. of Sikkim / सिक्किम	41	41	2725.25	52.41	57.64962	All Weeks	No Valid LC	
5	NTPC / एनटीपीसी	37	2	6994.96	134.52	147.97033	Week-14, 22	03-08-2023	LC opened for Rs. 147,97,000 /-
6	Maithon Power Limited / मैथन	14	1	136.99	2.63	2.89779	Week-4	31-07-2023	LC opened for Rs Rs. 2,89,779 /-
7	Adhunik Power & Natural Resources Limited / अधुनिक शक्ति	20	19	322.87	6.21	6.82984	All Weeks except Wk-27	No Valid LC	
8	Gati Infrastructure Private Limited / गुजायन	9	6	33.66	0.65	0.71196	Week-5, 12, 14, 15, 29, 30	No Valid LC	
9	GMR Kamalanga Energy Limited / जीएमआर	1	1	42.36	0.81	0.89615	Week-7	No Valid LC	
10	Jindal India Thermal Power Ltd. / जिंदल	26	5	1202.22	23.12	25.43147	Week-21, 26, 29, 38, 41	No Valid LC	
11	DANS Energy Private Limited - Operation Retention Account / डैन्स	49	26	1019.28	19.60	21.56162	Week-1, 2, 3, 4, 5...	No Valid LC	
12	Powergrid Corporation Of India Limited-Sasaram / सासाराम	28	8	21.97	0.42	0.46484	Week-6, 16, 17, 18, 19, 20, 2	31-03-2023	LC opened for Rs. 46,484 /-
13	Sneha Kinetic Power Projects Pvt. Ltd./ दिक्चू	15	1	82.48	1.59	1.74484	Week-26	01-08-2023	LC opened for Rs Rs. 174,484 /-
14	PGCIL-Alipurduar / अलीपुरदुआर	26	16	41.02	0.79	0.86763	Week-3, 4, 6, 7, 9, 10...	No Valid LC	
15	Shiga Energy Private / शिगा ऊर्जा	44	26	789.57	15.18	16.70240	Week-1, 2, 4, 9...	No Valid LC	
16	NABINAGAR POWER GENERATING CO. PVT LTD. / नबीनगर	16	1	607.86	11.69	12.85864	Week-24	03-02-2023	LC opened for Rs 47,36,890 /-
17	NABINAGAR POWER GENERATING CO. PVT LTD. - INFIRM	40	1	1151.76	22.15	24.36413	Week-40		
18	RONGNICHU HEP	24	6	110.97	2.13	2.34742	Week-6, 7, 8, 10, 11, 15	No Valid LC	
19	PTC INDIA LTD.	6	1	198.04	3.81	4.18922	Week-45	No Valid LC	

SUMMARY OF DEVIATION CHARGE RECEIPT AND PAYMENT STATUS

BILL UPTO 16-10-2022 (W-29 of 2022-2023)
Last Payment Disbursement Date - 01-11-2022

Figures in Rs. Lakhs

CONSTITUENTS	Net outstanding for 2021-22	Receivable	Received	Payable	Paid	Outstanding for 2022-23	Total Outstanding
BSPTCL	0.00000	16,226.50793	546.03092	5,188.65179	0.00000	10,491.82522	10,491.82522
JUVNL	0.00000	11,766.11809	420.78070	633.41684	0.00000	10,711.92055	10,711.92055
DVC	0.00000	7,211.84605	7,417.40721	906.89269	1,309.63872	197.18487	197.18487
GRIDCO	6.42843	27,199.05695	25,417.09092	3,448.21868	3,540.69735	1,874.44470	1,880.87313
WBSETCL	82.45475	20,237.93909	20,168.86138	2,325.47492	2,348.34341	91.94620	174.40095
Sikkim	456.99860	844.03770	0.00000	746.40107	0.00000	97.63663	554.63523
NTPC	0.00000	11,437.73732	11,054.84399	24.44012	24.48653	382.93974	382.93974
NHPC	0.00000	0.00000	0.00000	1,549.31800	1,549.31800	0.00000	0.00000
MPL	0.00000	104.83023	104.83023	591.20505	591.20505	0.00000	0.00000
APNRL	0.00000	799.82517	511.06072	95.72776	95.72776	288.76445	288.76445
CHUZACHEN	0.00000	55.58589	55.58589	151.74629	151.74629	0.00000	0.00000
NVVN-BD	0.00000	23.36139	23.36139	531.14566	531.14566	0.00000	0.00000
GMR	0.00000	517.65715	322.74292	216.53049	216.95089	195.33463	195.33463
JITPL	0.00000	1,046.47024	1,035.80834	119.87725	119.87725	10.66190	10.66190
TPTCL (Dagachu)	0.00000	3,312.37867	3,266.08433	0.00000	0.00000	46.29434	46.29434
JLHEP	0.00000	1,172.32873	1,128.45854	0.00000	0.00000	43.87019	43.87019
NVVN-NEPAL	0.00000	6,018.80423	6,018.80423	1,019.10229	1,019.10229	0.00000	0.00000
IBEUL	0.00000	0.00000	0.00000	0.00000	0.00000	0.00000	0.00000
BRBCL	0.00000	674.14065	637.09702	92.97842	92.97842	37.04363	37.04363
PGCIL SASARAM	0.00000	22.44037	22.43064	38.16229	38.16229	0.00973	0.00973
TUL (Teesta-III)	-0.02372	923.01837	922.99465	90.00523	90.00523	0.02372	0.00000
NERLDC	-411.85650	1,18,588.51844	1,17,079.72788	21,452.14110	21,452.14110	1,508.79056	1,096.93406
WRLDC	-42.74324	0.00000	0.00000	6,09,666.37508	6,09,666.39986	0.02478	-42.71846
NRLDC	-4,591.25039	1,47,310.76685	1,73,848.87507	9,028.70567	9,028.70567	-26,538.10822	-31,129.35861
SRLDC	-335.82650	3,24,076.52945	3,05,193.84999	0.00000	0.00000	18,882.67946	18,546.85296
VAE	0.00000	0.00000	0.00000	0.00000	0.00000	0.00000	0.00000
Dikchu	0.00000	70.76512	70.76512	204.19152	204.48244	0.29092	0.29092
PGCIL-Alipurduar	0.00000	13.37830	9.33411	5.70548	5.70548	4.04419	4.04419
Tashiding(THEP)	0.00000	391.31736	388.92466	103.14677	103.14677	2.39270	2.39270
OPGC	0.00000	8.21880	0.00000	0.00000	0.00000	8.21880	8.21880
KBUNL	0.00000	322.85495	322.85531	35.85888	35.85888	-0.00036	-0.00036
NPGC	0.00000	741.08458	741.08458	181.29066	181.29066	0.00000	0.00000
NPGC-Infirm	0.00000	298.01341	298.01341	1,006.41355	1,006.41355	0.00000	0.00000
RONGNICHU	0.00000	20.68357	20.68357	337.64995	337.64995	0.00000	0.00000
BRBCL U4 Infirm	0.00000	0.00000	0.00000	0.00000	0.00000	0.00000	0.00000
PTC Bhutan	0.00000	0.00000	0.00000	141.54024	141.54024	0.00000	0.00000
Total	-4,835.81857	7,01,436.21505	6,77,048.38772	6,59,932.31374	6,53,882.71974	18,338.23333	13,502.41476

Receivable: Receivable by ER Payable: Payable by ER POOL
 Received: Received by ER P Paid: Paid by ER POOL
 '- ve' Payable by ER pool '+ ve' Receivable by ER pool

Deviation Interest Bill due to delay payment

Annexure-B9.B

All figs in Rupees.

SI No.	Constituent Name	Interest outstanding till Q4_2020-21	Interest Received by Pool against outstanding	Interest Paid by pool against Outstanding	Net Interest outstanding till Q4_2020-21
1	BSPTCL	91,05,608	91,05,608		0
2	DVC	23,718		23,718	0
3	GRIDCO	-2,79,466		2,79,466	0
4	JUVNL	4,34,61,973	4,34,61,973		0
5	Sikkim	11,76,865	11,76,865		0
6	WBSETCL	21,415	21,415		0
7	NHPC	-54,745		54,745	0
8	NTPC	0			0
9	APNRL	11,33,748	11,33,748		0
10	BRBCL	-1,316		1,316	0
11	JLHEP	1,28,853	1,15,968	12,885	0
12	CHUZACHEN	-3,119		3,119	0
13	GMR	1,73,96,828			1,73,96,828
14	IBEUL	26,75,383			26,75,383
15	JITPL	8,589	8,589		0
16	KBUNL	40	40		0
17	MPL	-33,428		33,428	0
18	NPGC-Infirm	0			0
19	NPGC	-10,953		10,953	0
20	NVVN-BD	24,603		24,603	0
21	NVVN-NEPAL	0			0
22	OPGC	24,209			24,209
23	PGCIL-Alipurduar	1,72,257	1,72,258		-1
24	PGCIL SASARAM	1,686	1,686		0
25	Tashiding(THEP)	1,57,661	1,57,661		0
26	Dikchu	28,701	28,701		0
27	TPTCL (Dagachu)	0			0
28	TUL (Teesta-III)	-1,134		1,134	0

'- ve' Payable by ER pool

'+ ve' Receivable by ER pool

Note: Ind-bharath interest is calculated till 29.05.2019

RRAS interest details				
Constituents	Amount in ₹ Lacs	Interest Paid in 1st Quarter 2021-22	Balance	Payment Date
NTPC	-4.85430	4.85430	0.00000	16.06.2020
BRBCL	-0.60400	0.60400	0.00000	16.06.2020
KBUNL	-3.22746	3.22746	0.00000	16.06.2020
MPL	-2.22505	2.22505	0.00000	16.06.2020
NPGC	-0.79683	0.79683	0.00000	16.06.2020
Total	-11.70764	11.70764		

STATUS OF REACTIVE CHARGES

Annexure-III

AS ON 01.11.22

Name of Parties	Receivable Amount by pool	Received Amount by pool	Payable Amount by pool	Paid Amount by pool	Outstanding Amount Receivable(+Ve) / Payable by pool(-Ve)
BSPHCL	4,61,21,706	3,32,50,493	1,79,63,568	97,12,179	46,19,824
JUVNL	8,90,10,509	4,86,20,925	0	0	4,03,89,584
DVC	3,46,78,692	3,39,12,260	18,38,832	18,38,832	7,66,432
GRIDCO	2,68,96,394	2,40,94,858	18,07,808	18,07,808	28,01,536
SIKKIM	51,50,571	48,00,000	6,07,920	2,57,349	0
WBSETCL	3,79,74,057	3,48,19,857	71,09,216	40,41,768	86,752

Receivable:

Received:

'- ve' Payable by ER pool

Receivable by ER POOI Payable:

Received by ER POOL Paid:

'+ ve' Receivable by ER pool

Payable by ER POOL

Paid by ER POOL

DSM account Reconciliation Status of ER constituents and Inter Regional

Annexure-B10.1

	2019-20				2020-21				2021-22				2022-23			
Name of The Utility	Q1(17.07.19)	Q2(21.10.19)	Q3(13.01.20)	Q4(15.04.20)	Q1(15.07.20)	Q2(23.10.20)	Q3(20.01.21)	Q4(28.04.21)	Q1(06.07.21)	Q2(07.10.21)	Q3(11.01.22)	Q4(18.04.22)	Q1 (15.07.22)			
Inter Regional																
WR	NO	NO	NO	NO	NO	NO	NO	NO	NO	NO	NO	NO	NO			
SR	YES	YES	YES	YES	YES	YES	YES	YES	NO	NO	NO	NO	NO			
NER	NO	NO	NO	NO	YES	YES	YES	YES	YES	YES	YES	YES	YES			
NR	NO	NO	NO	NO	NO	NO	NO	NO	NO	NO	NO	NO	NO			
Intra Regional																
BSPHCL	YES	YES	YES	YES	YES	YES	YES	YES	YES	YES	YES	YES	NO			
JUVNL	YES	YES	YES	YES	YES	NO	NO	NO	NO	NO	NO	NO	NO			
DVC	YES	YES	YES	YES	YES	YES	YES	YES	YES	YES	YES	YES	NO			
GRIDCO	YES	YES	YES	YES	YES	YES	YES	YES	NO	YES	YES	YES	YES			
WBSETCL	YES	YES	YES	YES	YES	NO	NO	NO	YES	NO	NO	NO	NO			
SIKKIM	YES	NO	NO	NO	NO	NO	NO	NO	NO	NO	NO	NO	NO			
NTPC	YES	YES	YES	YES	YES	YES	YES	YES	Yes	YES	YES	YES	YES			
NHPC	YES	YES	YES	YES	YES	YES	YES	NO	YES	YES	YES	YES	NO			
MPL	YES	YES	YES	YES	YES	YES	YES	YES	YES	YES	YES	YES	YES			
KBUNL	YES	YES	YES	YES	YES	YES	YES	YES	YES	YES	YES	YES	NO			
APNRL	YES	YES	YES	YES	YES	NO	NO	NO	NO	NO	NO	NO	NO			
CHUZACHEN(GATI)	YES	YES	YES	YES	NO	NO	NO	NO	NO	NO	NO	NO	NO			
NVVN(Ind-Bng)	YES	YES	YES	YES	YES	NO	NO	NO	NO	NO	NO	NO	NO			
NVVN(Ind-Nep)	YES	YES	YES	YES	YES	NO	NO	NO	NO	NO	NO	NO	NO			
GMR	YES	YES	YES	YES	NO	NO	NO	NO	YES	NO	NO	NO	NO			
JITPL	YES	YES	YES	YES	YES	YES	YES	NO	NO	NO	NO	YES	NO			
INBEUL	NO	NO	NO	NO	NO	NO	NO	NO	NO	NO	NO	NO	NO			
TPTCL (DAGACHU)	YES	YES	YES	YES	YES	NO	NO	NO	YES	YES	YES	YES	NO			
JLHEP(DANS ENERGY)	YES	YES	YES	YES	YES	YES	YES	YES	YES	YES	YES	YES	NO			
BRBCL	YES	YES	YES	YES	YES	YES	YES	YES	YES	YES	YES	YES	YES			
POWERGRID (ER-I)	YES	YES	YES	YES	YES	YES	YES	YES	YES	YES	NO	NO	NO			
POWERGRID (ER-II)	YES	YES	YES	YES	YES	YES	YES	YES	YES	YES	YES	YES	YES			
TUL (TEESTA-III)	YES	YES	YES	YES	YES	YES	YES	YES	YES	YES	YES	YES	NO			
DIKCHU	YES	YES	YES	YES	YES	NO	NO	NO	NO	NO	NO	NO	YES			
SHIGA (TASHIDING)	YES	YES	YES	YES	YES	NO	NO	NO	YES	YES	YES	YES	NO			
OPGC	NO	NO	NO	NO	NO	NO	NO	NO	NO	NO	NO	NO	NO			
NPGC	YES	YES	YES	YES	YES	YES	YES	YES	YES	YES	YES	YES	YES			
Rongnichu													YES	NO	NO	
PTC Bhutan													YES	YES		

(1) The dates in the bracket indicates the date of sending the Reconciliation statements by ERLDC to utilities.
 (2) YES Indicates that signed reconciliation statement received by ERLDC
 (3) NO Indicates that signed reconciliation statement is not received by ERLDC

Reactive Account Reconciliation Status

Annexure-B10.2

	2019-20				2020-21				2021-22				2022-23		
Reactive account Reconciliation Status of ER constituents															
Name of The Utility	Q1(17.07.19)	Q2(21.10.19)	Q3(13.01.20)	Q4(15.04.20)	Q1(15.07.20)	Q2(23.10.20)	Q3(20.01.21)	Q4(28.04.21)	Q1(06.07.21)	Q2(07.10.21)	Q3(11.01.22)	Q4(18.04.22)	Q1(15.07.22)		
Intra Regional															
BSPHCL	YES	NA	YES	YES	YES	YES	YES	YES	YES	YES	YES	NO	YES		
JUVNL	NO	NO	NO	NO	NO	NO	NO	NO	NO	NO	NO	NO	NO		
DVC	YES	N/A	N/A	N/A	YES	NO	NO	NO	NO	NO	NO	YES	NO		
GRIDCO	YES	YES	YES	YES	YES	YES	YES	NO	NO	YES	YES	YES	YES		
WBSETCL	YES	YES	NO	NO	YES	NO	NO	YES	YES	NO	NO	NO	NO		
SIKKIM	NO	NO	NO	NO	NO	NO	NO	NO	NO	NO	NO	NO	NO		

RRAS Account Reconciliation Status

	2019-20				2020-21				2021-22				2022-23		
RRAS account Reconciliation Status															
Name of The Utility	Q1(17.07.19)	Q2(21.10.19)	Q3(13.01.20)	Q4(15.04.20)	Q1(15.07.20)	Q2(23.10.20)	Q3(20.01.21)	Q4(28.04.21)	Q1(06.07.21)	Q2(07.10.21)	Q3(11.01.22)	Q4(18.04.22)	Q1(15.07.22)		
NTPC	YES	YES	YES	YES	YES	YES	YES	YES	YES	YES	YES	NO	YES		
BRBCL	YES	YES	YES	YES	YES	YES	YES	YES	NO	NO	YES	NO	YES		
KBUNL	YES	YES	NO	NO	YES	NO	NO	NO	NO	NO	NO	NO	NO		
NPGC	NA	NA	YES	YES	YES	NO	YES	NO	YES	YES	YES	YES	YES		
MPL	NA	YES	YES	YES	YES	YES	YES	YES	YES	YES	YES	YES	YES		

AGC Account Reconciliation Status

	2019-20				2020-21				2021-22				2022-23		
Name of The Utility	Q1(17.07.19)	Q2(21.10.19)	Q3(13.01.20)	Q4(15.04.20)	Q1(15.07.20)	Q2(23.10.20)	Q3(20.01.21)	Q4(28.04.21)	Q1(06.07.21)	Q2(07.10.21)	Q3(11.01.22)	Q4(18.04.22)	Q1(15.07.22)		
(NTPC)	YES	YES	YES	YES	YES	YES	YES	NO	YES	YES	YES	NO	YES		
MPL										YES	YES	YES	YES		
NHPC										NO	NO	NO	NO		
NPGC										-	YES	YES	YES		

Reconciliation Between Open Access department of ERLDC and SLDCs, STUs

Sl. No.	STUs / SLDCs Name	Quarter-I (2018-19)	Quarter-II (2018-19)	Quarter-III (2018-19)	Quarter-IV (2018-19)	Quarter-I (2019-20)	Quarter-II (2019-20)	Quarter-III (2019-20)	Quarter-IV (2019-20)	Quarter-I (2020-21)	Quarter-II (2020-21)	Quarter-III (2020-21)	Quarter-IV (2020-21)	Quarter-I (2021-22)	Quarter-II (2021-22)	Quarter-III (2021-22)	Quarter-IV (2021-22)	Quarter-I (2022-23)	Quarter-II (2022-23)
	Date of Issuance	16-07-2018	15-10-2018	18-01-2019	18-04-2019	15-07-2019	16-10-2019	16-01-2020	16-04-2020	15-07-2020	14-10-2020	12-01-2021	13-04-2021	13-07-2021	11-10-2021	17-01-2022	28-04-2022	28-07-2022	26-10-2022
1	West Bengal - SLDC and STU	YES	YES	YES	YES	YES	YES	YES	YES	YES	YES	NO	NO	YES	NO	NO	NO	NO	NO
2	DVC - SLDC	YES	YES	YES	YES	YES	YES	YES	YES	YES	YES	YES	YES	YES	YES	YES	NO	NO	NO
3	OPTCL-SLDC and STU	YES	YES	YES	YES	YES	YES	YES	YES	YES	YES	YES	YES	NO	YES	YES	NO	YES	YES
	Jharkhand STU and SLDC	NA	NA	NA	NA	NA	NA	NA	NA	NA	NA	NA	NA	NA	NO	NO	NO	NO	NO
4	Bihar-SLDC and STU	NA	NA	YES	YES	YES	YES	YES	YES	YES	YES	YES	YES	YES	YES	YES	NO	NO	NO

Reconciliation Between Open Access department of ERLDC and Applicants

Sl. No.	Applicants Name	Quarter-I (2018-19)	Quarter-II (2018-19)	Quarter-III (2018-19)	Quarter-IV (2018-19)	Quarter-I (2019-20)	Quarter-II (2019-20)	Quarter-III (2019-20)	Quarter-IV (2019-20)	Quarter-I (2020-21)	Quarter-II (2020-21)	Quarter-III (2020-21)	Quarter-IV (2020-21)	Quarter-I (2021-22)	Quarter-II (2021-22)	Quarter-III (2021-22)	Quarter-IV (2021-22)	Quarter-I (2022-23)	Quarter-II (2022-23)
	Date of Issuance	25-07-2018	15-10-2018	17-01-2019	12-04-2019	11-07-2019	15-10-2019	16-01-2020	16-04-2020	14-07-2020	14-10-2020	12-01-2021	13-04-2021	13-07-2021	08-10-2021	17-01-2022	27-04-2022	28-07-2022	26-10-2022
	Bihar State Power Holding Company Limited	NA	NA	NA	NA	NA	NA	NA	NA	NO	NO	NA	NA	NA	NA	NA	NA	NA	NA
1	Calcutta Electric Supply Company	YES	NA	YES	NA	NA	NA	NA	NA	NA	NA	NA	NA	NA	NA	NA	NA	NA	NA
	GRIDCO Ltd	NA	NA	NA	NA	NA	NA	NA	NA	NA	NA	NA	NA	NO	NA	NA	NO	YES	NO
2	Jindal India Thermal Power Limited	YES	YES	YES	YES	YES	NA	NA	NA	NA	NA	NA	NA	NA	NA	NA	NA	NO	NO
3	Jharkhand Bijli Vitaran Nigam Limited	YES	YES	YES	YES	YES	YES	YES	YES	YES	NO	NO	NO	NO	YES	YES	NO	NO	NO
	NHPC Limited	NA	NA	NA	YES	NA	NA	NA	NA	NA	NA	NA	NA	NA	NA	NA	NA	NA	NA
4	West Bengal State Electricity Distribution Company Limited	YES	YES	NO	NA	YES	YES	YES	YES	YES	YES	YES	NO	NO	NO	YES	YES	NO	NO

SUMMARY OF RRAS CHARGE RECEIPT AND PAYMENT STATUS

BILL UPTO 16-10-2022 (W-29 of 2022-2023)

Last Payment Disbursement Date 01.11.22

Figures in Rs. Lakhs

CONSTITUENTS	Receivable	Received	Payable	Paid	Outstanding
NTPC	8479.59616	2482.60882	16609.13485	10612.14751	0.000000
MPL	1251.22263	625.74651	766.50337	152.68938	11.662130
BRBCL	1860.53441	1160.17423	891.00594	535.19275	344.546990
KBUNL	115.82609	30.7824	379.15826	294.11456	-0.000010
NPGC	779.07685	425.28424	566.67947	212.88686	0.000000
TOTAL	12486.25614	4724.59620	19212.48189	11807.03106	356.20911

Receivable: Receivable by ER POOL Payable Payable by ER POOL
 Received Received by ER POOL Paid Paid by ER POOL
 "- ve" Payable by ER pool "+ ve" Receivable by ER pool

SUMMARY OF AGC CHARGE RECEIPT AND PAYMENT STATUS

BILL UPTO 16-10-2022 (W-29 of 2022-2023)

Last Payment Disbursement Date 01.11.22

Figures in Rs. Lakhs

CONSTITUENTS	Receivable	Received	Payable	Paid	Outstanding
NTPC	4362.32723	4344.06328	510.07532	491.81144	0.00007
NHPC	1.73521	1.28054	11.71303	11.71303	0.45467
MPL	3929.33580	3753.22960	0.00000	0.00000	176.10620
KBUNL	182.52452	182.52452	0.00000	0.00000	0.00000
NPGC	989.23411	989.23411	38.80104	38.80104	0.00000
TOTAL	9465.15687	9270.33205	560.58939	542.32551	176.56094

Receivable: Receivable by ER POOL Payable Payable by ER POOL
 Received Received by ER POOL Paid Paid by ER POOL
 "- ve" Payable by ER pool "+ ve" Receivable by ER pool

DETAILS OF DISBURSEMENT TO POWER SYSTEM DEVELOPMENT FUND

Sl No	Nature of Amount	Amount transferred to PSDF (Rs in Lac)	Date of Disbursement	Remarks
1	Opening Balance (upto 31.03.2019)	95896.17		
2	Reactive Energy Charge	105.79	04.04.19	Reactive Charges_18-19
3	Reactive Energy Charge	287.48	03.05.19	Reactive Charges_18-19 & 19-20
4	Reactive Energy Charge	129.70	03.06.19	Reactive Charges_19-20
5	Reactive Energy Charge	207.84	04.07.19	Reactive Charges_19-20
6	Reactive Energy Charge	94.92	02.08.19	Reactive Charges_19-20
7	Reactive Energy Charge	188.54	02.09.19	Reactive Charges_19-20
8	Surplus DSM amount transferred	32210.52	24.09.19	DSM Charges_19-20
9	Reactive Energy Charge	173.06	01.10.19	Reactive Charges_19-20
10	Reactive Energy Charge	273.15	01.11.19	Reactive Charges_19-20
11	Reactive Energy Charge	401.10	04.12.19	Reactive Charges_19-20
12	Reactive Energy Charge	252.54	02.01.20	Reactive Charges_19-20
13	Reactive Energy Charge	148.66	07.02.20	Reactive Charges_19-20
14	Reactive Energy Charge	205.22	04.03.20	Reactive Charges_19-20
15	Bank interest from Reactive acct	0.22	03.04.20	Bank interest from Reactive acct
16	Reactive Energy Charge	843.03	03.06.20	Reactive Charges_19-20 & 20-21
17	Reactive Energy Charge	507.80	07.07.20	Reactive Charges_17-18,18-19 & 20-21
18	Reactive Energy Charge	309.41	06.08.20	Reactive Charges_17-18,18-19 & 20-21
19	Reactive Energy Charge	83.24	02.09.20	Reactive Charges_19-20 & 20-21
20	Bank interest of DSM A/C-TDS portion	251.65	18.09.20	Bank interest TDS portion transferred from POSOCO,CC
21	Bank interest of DSM A/C-TDS portion	15.65	22.09.20	Bank interest TDS portion transferred from POSOCO,CC
22	Reactive Energy Charge	118.86	06.10.20	Reactive Charges_20-21
23	Reactive Energy Charge	101.43	04.11.20	Reactive Charges_20-21
24	Reactive Energy Charge	82.35	04.12.20	Reactive Charges_20-21
25	Reactive Energy Charge	500.95	06.01.21	Reactive Charges of 19-20 & 20-21
26	Reactive Energy Charge	92.51	03.02.21	Reactive Charges of 19-20 & 20-21
27	Reactive Energy Charge	50.23	04.03.21	Reactive Charges of 19-20 & 20-21
28	Reactive Energy Charge	32.15	07.04.21	Reactive Charges of 19-20 & 20-21
29	Reactive Energy Charge	39.60	05.05.21	Reactive Charges of 19-20 & 20-21
30	Reactive Energy Charge	18.96	01.06.21	Reactive Charges of 20-21 & 21-22
31	Reactive Energy Charge	392.25	12.07.21	Reactive Charges of 20-21 & 21-22
32	Reactive Energy Charge	214.22	22.07.21	Reactive Charges 21-22
33	Addl. Dev	392.94	25.08.21	DSM Charges of 19-20 received from Jharkhand
34	Addl. Dev	5.99	03.09.21	DSM Charges of 19-20 received from Jharkhand
35	Reactive Energy Charge	330.73	09.09.21	Reactive Charges 21-22
36	Addl. Dev	1334.98	23.09.21	DSM Charges of 20-21 received from Bihar
37	Addl. Dev	500.00	27.09.21	DSM Charges of 20-21 received from Bihar
38	Addl. Dev	1500.00	29.09.21	DSM Charges of 20-21 received from Bihar
39	Addl. Dev	500.00	01.10.21	DSM Charges of 20-21 received from Bihar
40	Addl. Dev	1000.00	05.10.21	DSM Charges of 20-21 received from Bihar
41	Addl. Dev	402.60	05.10.21	DSM Charges of 20-21 received from Jharkhand
42	Reactive Energy Charge	131.06	07.10.21	Reactive Charges 21-22
43	Addl. Dev	1000.00	22.10.21	DSM Charges of 20-21 received from Bihar
44	Addl. Dev	1000.00	26.10.21	DSM Charges of 20-21 received from Bihar
45	Addl. Dev	539.21	28.10.21	DSM Charges of 20-21 received from Bihar
46	Reactive Energy Charge	224.71	03.11.21	Reactive Charges 21-22
47	Reactive Energy Charge	366.26	03.12.21	Reactive Charges 21-22
48	Reactive Energy Charge	5.34	09.12.21	Interest Amount received in Reactive Account
49	Addl. Dev	489.57	04.01.22	DSM Charges of 20-21 received from Jharkhand
50	Reactive Energy Charge	449.70	04.01.22	Reactive Charges 21-22
51	Reactive Energy Charge	547.41	04.02.22	Reactive Charges 21-22
52	Addl. Dev	7182.01	08.02.22	Excess amount after clearing Wk-43
53	Addl. Dev	103.38	28.02.22	DSM Charges of 20-21 received from Jharkhand and POSOCO CC (REC)
54	Reactive Energy Charge	22.29	04.03.22	Reactive Charges 21-22
55	Reactive Energy Charge	978.22	08.03.22	Reactive Charges 21-22
56	Reactive Energy Charge	502.63	04.04.22	Reactive Charges 21-22
57	Addl. Dev	13586.90	02.05.22	Addl Dev Charge 21-22
58	Reactive Energy Charge	91.68	02.05.22	Reactive Charges 21-22
59	Addl. Dev	323.73	17.05.22	DSM Charges of 21-22 received from Jharkhand
60	Addl. Dev	223.19	31.05.22	DSM Charges of 21-22 received from Jharkhand
61	Addl. Dev	17070.56	02.06.22	DSM charges
62	Reactive Energy Charge	104.78	02.06.22	Reactive Charges 21-22
63	Addl. Dev	700.00	10.06.22	DSM Charges of 21-22 received from Jharkhand and DVC (Bhutan)
64	Addl. Dev	230.66	24.06.22	DSM Charges of 21-22 received from Jharkhand and DVC (Bhutan)
65	Addl. Dev	200.00	28.06.22	DSM Charges of 21-22 received from Jharkhand
66	Addl. Dev	200.00	01.07.22	DSM Charges of 21-22 received from Jharkhand
66	Reactive Energy Charge	491.14	08.07.22	Reactive Charges 21-22 received from Bihar
67	Addl. Dev	200.00	14.07.22	DSM Charges of 21-22 received from Jharkhand
67	Addl. Dev	900.00	20.07.22	DSM Charges of 21-22 received from Sikkim and Bihar
68	Addl. Dev	300.00	25.07.22	DSM Charges of 21-22 received from Jharkhand
68	Addl. Dev	200.00	26.07.22	DSM Charges of 21-22 received from Jharkhand
69	Addl. Dev	400.00	28.07.22	DSM Charges of 21-22 received from Jharkhand
69	Addl. Dev	553.97	08.08.22	DSM Charges of 21-22 received from Bihar
70	Reactive Energy Charge	56.45	08.08.22	Reactive Charges 22-23
70	Reactive Energy Charge	586.62	07.09.22	Reactive Charges 22-23
71	Reactive Energy Charge	152.78	07.10.22	Reactive Charges 22-23
	Total	190310.67		