



Eastern Regional Power Committee

**AGENDA
OF
234th OCC MEETING**

**Venue: ERPC Secretariat, Kolkata
Date: 23.12.2025**

Contents

1. PART-A: CONFIRMATION OF MINUTES	1
1.1. Confirmation of Minutes of 233 rd OCC Meeting held physically at ERPC Secretariat on 21 st November 2025.....	1
2. PART-B: ITEMS FOR DISCUSSION.....	1
2.1 Shifting of load from all India load ramp period to prevent over-drawal and critical low frequency operation of the grid: ERPC	1
2.2 Update on follow up agenda: ERPC	2
2.3 Methodology for Cost calculation with respect to the already commissioned 7 th ICT (500 MVA,400/220 KV) at Subhashgram(PG) Substation: CESC	6
2.4 Black start OF ER Units in Sikkim Complex: ERLDC.....	6
2.5 Shutdown proposal of Thermal generating units from the month of January to March 2026: ERPC	7
2.6 Shutdown Program of Hydro power plants	8
3. PART-C: ITEMS FOR UPDATE/FOLLOW-UP/INFORMATION	10
3.1. ER Grid performance during November 2025	10
3.2. Non-Submission of FRC data in stipulated time-frame: ERLDC	10
3.3. Regarding Non-Submission of Forecasting Data from States: ERLDC.....	11
4. PART-D: OPERATIONAL PLANNING.....	14
4.1. Anticipated power supply position for December-2025	14
4.2. Major Thermal Generating Units/Transmission Element outages/shutdown in ER Grid (as on 21-12-2025).....	14
4.3. Long outage report of transmission Element (MORE THAN 01 WEEK) (As on 21.12.2025):	16
4.4. Commissioning of new units and transmission elements in Eastern Grid in the month of November-2025.....	19
4.5. UFR operation during the month of November 2025	28

EASTERN REGIONAL POWER COMMITTEE

AGENDA FOR 234th OCC MEETING TO BE HELD ON 23.12.2025 (TUESDAY) AT 10:30 HRS

1. PART-A: CONFIRMATION OF MINUTES

1.1. Confirmation of Minutes of 233rd OCC Meeting held physically at ERPC Secretariat on 21st November 2025

The Minutes of 233rd Operation Coordination Sub-Committee meeting held on 21.11.2025 was circulated vide letter dated 03.12.2025.

Members may confirm the minutes of 233rd OCC meeting.

2. PART-B: ITEMS FOR DISCUSSION

2.1 Shifting of load from all India load ramp period to prevent over-drawal and critical low frequency operation of the grid: ERPC

As per direction of **Ministry of Power** dated **01.02.2024 (Annex 2.1)**:

In order to combat global warming, it is necessary to shift from coal based power generation to Renewables. India has pledged that by 2030, it will have 50% of its installed capacity from non-fossil (Renewable) sources.

It is expected that the All India demand will continue growing at a rapid pace because of the increase in the pace of growth of the economy. Thermal capacity addition cannot keep pace – because the gestation period of constructing a thermal power plant is 6 to 7 years. Renewable Energy- especially solar – has a lower gestation period – so the increase in solar capacity will keep pace with the growth in demand . This will ensure that there will be no shortage of power during solar hours. Keeping all factors in view, it has been decided that agricultural load be shifted to solar hours. This will have the following advantages:

- i. The farmers will be able to irrigate their fields during daylight hours.
- ii. This will prevent depletion and help in conservation of precious ground water resource.
- iii. Solar power is cheaper than thermal/hydro – so the cost of supply during daylight hours is cheaper – so the cost of power for irrigation will come down.

There shall be no curtailment in the hours of supply for agriculture. The farmers will keep getting the same number of hours of supply which they are getting now. Because of the large capacity additions in RE, there shall be no shortage of Solar/RE during the solar hours.

Further, as it is proposed to shift the Time of Day(TOD) tariff, under which tariff during solar hours will be less, it may also be analyzed as to what other load can be shifted to solar hours; and this may be done.

An analysis has been done by NLDC (on one minute SCADA data) for the evening all India load ramping hours and that of drawal of the state control area of Bihar and Odisha from Nov-24 to Oct-25.

Analysis is attached as **Annexure-2.1**. Based on the analysis, the following are observed:

For Bihar

- Average Over Drawal (OD) remained between 80-170 MW (Max : 750 MW+)

- OD persisting for a significant portion of the ramp interval during these months, around 46% of the time overdrawal during ramp in last 12 months.

For Odisha

- Average Over Drawal (OD) remained between 110-160 MW (Max : 750 MW+)
- OD persisting for a significant portion of the ramp interval during these months, around 54% of the time overdrawal during ramp in last 12 months.

The above situation indicates, gap in Resource Adequacy (RA) exercise for ramping hours. Since, higher resources are available during solar hours, following is requested to be explored:

1. Shifting of loads from all India load ramping hours to high solar hours.
2. Keeping enough ramping resources and reserves during net load ramping hours and non-solar peak hours.

It is requested that concerned may please be advised to take action on the above suggestions and a brief action plan may be shared with concerned RLDC and NLDC.

Members may discuss.

2.2 Update on follow up agenda: ERPC

a) Reconductoring of 400KV Talcher-Meramundali and 400KV Farakka-Kahalgaon D/C

- 400kV Farakka-Kahalgaon D/C and 400kV Talcher-Meeramundali D/C transmission corridors are critical for power import to West Bengal and Odisha, respectively. During recent summers, these lines have experienced high power flows nearing their thermal limits. To address this, reconductoring with HTLS conductors has been approved under ERES-43 scheme with SCOD of 02.03.2026. POWERGRID has been entrusted with executing this reconductoring work under RTM. As demand remains lower between November and February due to favourable weather condition, it was discussed that the reconductoring work for both lines need to be completed by February 2026 to ensure reliable power supply.
- The matter was discussed in 232nd OCC Transmission line outage meeting wherein It was decided to discuss detailed outage plan in separate coordination meeting involving all stakeholders. Kick off meetings were conducted with POWERGRID on 29th Oct'25 and 4th Nov'25 for efficient outage planning. The coordination meetings involving all the parties were scheduled on 18th November 2025.

▪ As per 233rd OCC:

➤ Reconductoring of 400KV Talcher-Meramundali D/C

ERLDC informed that a special meeting was convened on 18th Nov 2025 via online mode (MS Teams) to discuss reconductoring plan of 400kV Talcher-Meramundali D/C. The minutes of the meeting is attached in **Annexure B.2.2.a**

- ❖ ERLDC further updated that LILO portion of Talcher-Meramundali Ckt-2 (17.158 KM) has already been taken under shutdown from 21st November 2025 by PG Odisha.
- ❖ PGCIL informed that reconductoring of 400KV Talcher-Meramundali#1 will commence from 21st Dec 2025 after completion of ongoing reconductoring of LILO portion and it is expected that reconductoring of the said line will be completed by end of January 2026.
- ✓ **233rd OCC decision:**
- OCC advised PGCIL to complete the reconductoring of LILO part by 20th Dec'25 and instructed to start the work of 400KV Talcher-Meramundali circuit-1 from 21st Dec 2025 and complete by 5th Feb'26 and strictly adhere to the agreed time lines.
- OCC also advised PGCIL to submit progress report on weekly basis and share all revised supply schedule and execution details to ERPC/ERLDC.

➤ **Reconductoring of 400KV Farakka-Kahalgaon D/C**

ERLDC apprised that a special meeting was convened on 18th November 2025 via online mode to discuss reconductoring plan of 400KV Farakka-Kahalgaon D/C involving stakeholders from NTPC, PGCIL, ERLDC & ERPC. The MoM of the meeting is attached in **Annexure B.2.2.b**.

➤ PGCIL submitted that Line shutdown earlier planned from 20.11.25 could not be taken up due to **non-availability of material**. Material expected to reach by last week of Nov'26.

➤ PG ER1 also informed that **outage 400KV Farakka-Kahalgaon#1 required for 2 months starting 1st week of Dec'26 and Circuit#2 outage required for 2 months after completion of Circuit#1.**

OCC Decision

OCC advised PGCIL to strictly adhere to the said timeline and complete the reconductoring of at least one circuit before February 2026 with simultaneous upgradation of bay equipments at both ends in coordination with NTPC.

Powergrid may update. Members may discuss.

b) Restoration status of 220kV Rajarhat (PG) - New Town IIC cable.

Reference:

Vide 221st OCC dated 27.11.24:

The faulty b phase cable already is isolated at both ends. As, the repair of the b phase cable involves kits and spares (particularly for the jointing portion of two different sized cables) from abroad, which is time consuming, so to keep the other two phase UG cables healthy, it was extremely necessary to keep those in no load charging condition. • Repair of the faulty cable (B phase) is getting delayed due to non-availability of the imported cable jointing kit. • Neither charging the cable at low voltage nor charging from WBSETCL end was feasible • The said no load charging may please be allowed within shortest possible time to reduce any possibility of damage of R, Y phase cables in respect of Rajarhat (PG)-New Town AAIC circuit II.

As per 229th OCC:

WBSETCL updated that the said line was charged on **09.07.2025** after rectification of cable fault. **However, on 10.07.2025 B phase of circuit 1 of Rajarhat-New Town IIC developed a cable fault.**

WBSETCL may update. Members may discuss.

c) Intrastate Transmission Network Assessment & Mitigation – DVC:

Implementation of SPS scheme for N-1 compliance of ICTs at Bokaro

A joint study was conducted on 22nd October 2025 where SPS proposal was discussed.

As per 233rd OCC:

DVC updated that SPS implementation time line will be shared shortly with ERPC & ERLDC.

233rd OCC decision:

OCC advised SLDC, DVC to finalise the timeline for the implementation of the SPS and same may be communicated to ELDC & ERPC at the earliest.

DVC may update. Members may discuss.

d) Intrastate Transmission Network Assessment & Mitigation – West Bengal

Reference:

Modification of Existing SPS Scheme at Subhasgram (PG) with Undervoltage Logic

ERLDC Proposed modification of existing SPS at Subhasgram (PG) to include undervoltage logic with time delay to prevent voltage collapse. OCC advised SLDC, West Bengal, WBSEDCL and CESC to meet after puja for discussing the proposed modified SPS scheme at Subhasgram and share the outcome in next OCC.

Update:

State-level meeting already done by SLDC.

WB may share the update. Members may discuss.

e) Intrastate Transmission Network Assessment & Mitigation-Odisha

Reference:

As deliberated in 231st OCC meeting held on 22.09.2025, OPTCL and SLDC Odisha were directed to submit actions taken report i.r.o. near miss event in Odisha on 12th August 2025 and constitute the committee as recommended earlier, comprising of members of ERPC, ERLDC, SLDC, & OPTCL to review the protection settings and the short-term/long-term measures as suggested by ERLDC.

OCC also advised SLDC Odisha to obtain approval from appropriate authority for implementation of UVLS scheme proposed for safeguarding the load of capital city and nearby areas from cascaded failure.

In 233rd OCC Meeting,

OPTCL informed that UVLS scheme is still purview of their higher management and if any progress is made, the same shall be communicated to ERPC/ERLDC.

➤ OCC took a serious note on the inordinate delay in decision making in the implementation of UVLS scheme as a contingency measure, considering the growing demand and increased congestion in the Odisha system.

➤ OCC further advised OPTCL to pursue the issue with their higher management with utmost priority and the matter was referred to TCC for detailed deliberations.

OPTCL & Odisha SLDC may update. Members may discuss.

f) Interim arrangement for evacuation of JSWEUL Generation

Ind-Barath Energy (Utkal) Limited (IBEUL) (2 × 350 MW) has been evacuating power from Unit-1 and Unit-2 through an interim arrangement, i.e., by connecting one circuit of the 400kV OPGC–Sundargarh D/C ISTS line LILO at IBEUL, thereby forming an OPGC–IBEUL–Sundargarh 400 kV S/C line.

In view of the delay in completion of the Dedicated Transmission Line (DTL), the Central Electricity Authority (CEA) has approved continuation of the above interim arrangement for evacuation of power through LILO of the 400 kV OPGC–Sundargarh line at IBEUL with SPS, only up to 31.12.2025, as recorded in the Minutes of Meeting dated 15.07.2025 (Annexure-2.1. E).

JSWEUL may update. Member may discuss.

g) Construction of Nawada–Durgapur–Jeerat (New) 765kV corridor for improved reliability in the Eastern Region and improve reliability of power supply to Kolkata:

To improve reliability of Kolkata and adjacent area, one alternate 765kV corridor was planned after several joint study meeting organised by CTU. Nawada S/s along with Nawada – Durgapur – Jeerat (New) 765kV corridor was agreed to be taken up for strengthening 765kV interconnection to Kolkata area. Accordingly, the “ERES-47: Nawada – Durgapur – Jeerat (New) 765kV corridor” scheme was agreed to be implemented as a strengthening scheme in the 47th CMETS-ER held on 29-09-2025. The final scope of works was discussed and agreed in 48th CMETS-ER held on 30-10-2025.

This project was discussed in 55th TCC/ERPC meeting dated 16.12.2025 and 17.12.2025 for final approval. However, West Bengal deliberated that proposed 765KV lines will have very less impact for ensuring a stable and reliable supply to Kolkata.

TCC advised CTU to conduct a joint study for exploring all the pros and cons of implementation of the scheme in consultation with WBSETCL & ERLDC and this scheme may be clubbed with RE power evacuation scheme from Bikaner phase-VI up to Eastern Region and a detailed report may be shared with ERPC latest by 31st December 2025.

WBSETCL may update. Member may discuss.

h) Establishment of proposed TCF-II 220/132/33 KV SS by WBSETCL

The proposal for the TCF-II 220/132 kV intra-state substation with ISTS connectivity (through D/C LILO of Siliguri PG–Kishanganj PG 220 kV HTLS line) proposed to meet the rising demand in the Ghoshpukur–TCF and adjacent areas. The scheme has undergone detailed discussion at CMETS-ER since May 2025, considering multiple operational scenarios. Studies indicate that, under N-1 contingency, the Binaguri PG–Siliguri PG line would load to 426 MW, which is above within 90% of the HTLS line’s thermal limit (450 MW) assuming a 1500 MW APD–Agra HVDC link setting.

The same matter was again discussed in West Bengal Resource Adequacy Studies, and it was proposed to set up a 400/220/132kV substation. The same matter was discussed in **55th TCC & ERPC meeting**. The matter was referred to West Bengal Resource Adequacy Studies held on **22nd December 2025**.

WBSETCL may update. Member may discuss.

i) Commissioning of an additional 250 MVA ICT at Tenughat

Reference:

On 06.08.2025 a special meeting was convened to decide on the future course of the 400 kV Tenughat–PVUNL interim line.

As per 232nd OCC :

- JUSNL updated that testing of the 250MVA ICT at Tenughat has been completed and test report is to submitted to the State power department for electrical clearances.
- SLDC, Ranchi further updated that ICT commissioning is expected to be completed by 15th December 2025.

OCC Decision

OCC advised JUSNL to expedite the commissioning of 250MVA ICT at Tenughat so that the said ICT shall be operational at the earliest.

JUSNL may update. Members may discuss.

2.3 Methodology for Cost calculation with respect to the already commissioned 7th ICT (500 MVA,400/220 KV) at Subhashgram(PG) Substation: CESC

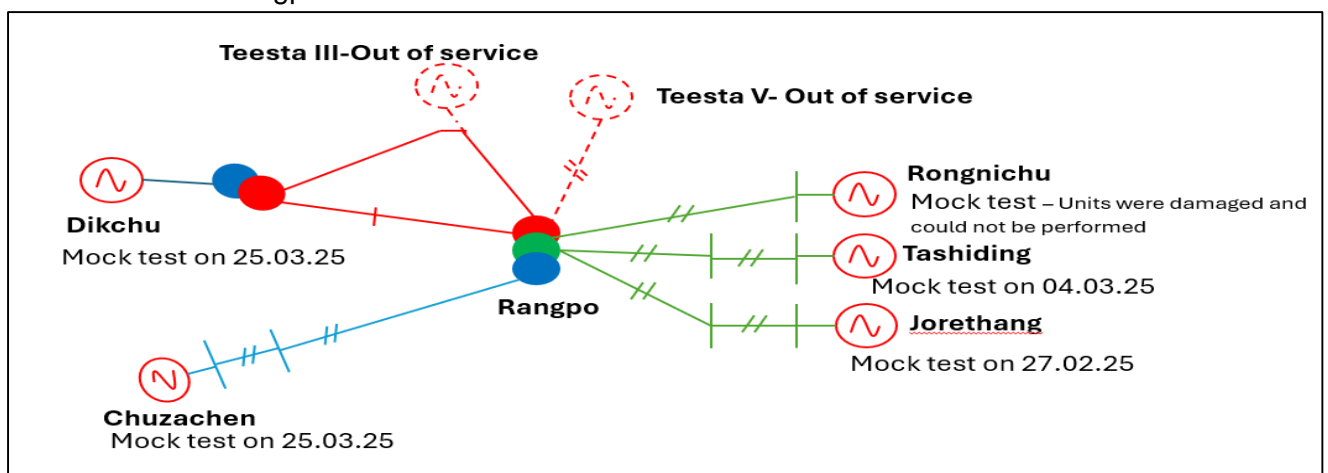
- As per MOM of the Meeting held at Vidyut Bhavan on 25.08.2023 under the Chairmanship of the Secretary, Dept. of Power, Govt. of West Bengal, it was decided that incremental charges associated with this will be borne by CESC. But...*“as Powergrid cannot claim the cost related to this interim arrangement directly from CESC and can claim only from WBSEDCL as DIC Discom, WBSEDCL shall pay all cost / incremental charges to PGCIL after realising the same from CESC through bilateral arrangement between CESC & WBSEDCL”...*
- It was also decided in the said Meeting that realisation of incremental cost from CESC shall commence after the subject ICT is commissioned as interim measure ICT at Subhashgram till commissioning of the 6th 500 MVA 400/220 KV ICT thereat.
- Now the said 7th ICT has already been commissioned on 21.06.2024 and as per the latest communication received from PGCIL, the 6th ICT is scheduled to be commissioned thereafter by the second half of January, 2026,
- So, guidance on the methodology for calculation of the incremental cost is sought.

CESC may explain. Members may discuss.

2.4 Black start OF ER Units in Sikkim Complex: ERLDC

A black start capable resource and its readiness are essential for grid resilience. As mandated under Clause 34(3) of the IEGC 2023, all users must conduct mock black start exercises annually, coordinated by the SLDC for state-level stations and by the RLDC for ISGS and IPP stations. In the Eastern Region, all black start capable ISGS and IPP units are located in Sikkim and are connected to the 400/220/132 kV Rangpo substation.

In eastern region all black start capable ISGS and IPP units are located in Sikkim and connected to 400/220/132 kV Rangpo substation as shown below:



During 2024–25, mock black start exercises were conducted at Jorethang, Tashiding, Chuzachen, and Dikchu HEPs. Only Tashiding could synchronize with Rangpo, and that too after an hour's delay, while the other HEPs could not complete synchronization.

During this year, on 12 December 2025, Tashiding also failed to synchronize despite frequency matching within 0.01 Hz, due to the Rangpo BCU hanging repeatedly even after multiple restarts. (Report attached)

Following key challenges were identified:

Key Challenges:

- Synchronization at the Rangpo end is based on a **Bay Control Unit (BCU)** which checks for: Voltage difference, Frequency difference, Angle difference.
- Only after the BCU confirms all three criteria are met, a **manual closing command** is issued by the operator.
- To accommodate operator reaction time and prevent out-of-phase synchronization, a tight frequency difference setting of 0.01 Hz is enforced. This ensures that within the operator’s response window, the angle difference remains within ± 15 degrees.
- However, such stringent synchronization settings are difficult to satisfy during a black start, as both generator and grid frequencies varies continuously. This leads to either: Excessive delay in synchronization or Failure to meet synchronization criteria altogether.
- The black-start capable generating units faced difficulty in maintaining a stable frequency, which further complicated the synchronization process.

Remedial Measures:

1. Installation of Auto-Synchronization Facilities:

- Deployment of automatic synchronization systems at strategic substations such as Rangpo, for all existing and future feeders connected to black-start capable generating stations, is required.
- At plant end auto synchronization facilities are available and difference of frequency Setting is kept at 0.1 Hz, therefore it synchronizes smoothly while bringing the unit on bar. Accordingly, at Rangpo end, with installation of auto synchronization, frequency setting can also be increased which will enable faster and smoother synchronisation.

2. Finalization of Synchronization Parameter Thresholds:

- A review and finalization of realistic and achievable synchronization parameter settings (voltage, angle, frequency difference) is essential.
- These thresholds should balance the need for operational safety with practical synchronization feasibility during black start conditions.

In consecutive 2 years, mock black start test failure has been observed in such an important hydro complex in the eastern region, which will be vital for restoration during actual blackout scenario.

Members may discuss.

2.5 Shutdown proposal of Thermal generating units from the month of January to March 2026: ERPC

<i>Maintenance Schedule of Thermal Generating Units of ER during 2025-26</i>									
<i>System</i>	<i>Station</i>	<i>Unit</i>	<i>Capacity (MW)</i>	<i>LGBR Approved</i>		<i>No. of Days</i>	<i>OCC Approved</i>		<i>Reason</i>
				<i>From</i>	<i>To</i>		<i>From</i>	<i>To</i>	
	NABINA GAR STPP	2	660	5-Jan-26	18-Feb-26	45	Not required.		AOH

NTPC	FARAKK A STPS	6	500	15-Jan-26	18-Feb-26	35	01.01.2026	14.02.2026	AOH
	BARAUN I TPS	9	250	01.12.2025	30.12.2025	30	01.01.2026	15.02.26	AOH
	BARAUN I TPS	8	250	15.03.26	31.03.26	16	Not required.		AOH
DVC	MEJIA TPS	8	500	11-Jan-26	4-Feb-26	25	Not required.		BOH
	MEJIA TPS	6	250				28.12.25	31.01.26	AOH- R&M
	MEJIA TPS	7	500				06.02.26	12.03.26	AOH- R&M
	KODAR MA TPP	2	500	11-Feb-26	17-Mar-26	28	Not required.		AOH
	KODAR MA TPP	1	500				10.12.25	13.01.26	AOH
BPDCL	BANDEL TPS	5	210	3-Feb-26	9-Mar-26	35	03.02.26	09.03.26	AOH
	KOLAGH AT TPS	4	210				05.01.2026	11.01.2026	ESP R&M
	SANTAL DIH	5	210	27.12.25	30.01.26	34	03.01.26	06.02.26	BTG OH + De-Nox
	SAGAR DIGHI	1	210	05.08.25	08.09.25	20	26.12.25	29.01.26	AOH
	KOLAGH AT	3	210	10.02.26	16.03.26	35	08.12.25	11.01.26	AOH
	KOLAGH AT	4	210				05.01.26	11.01.26	ESP R&M

The approved shutdown schedule(as per 232nd and 233rd OCC) is attached at Annex B. 2.5. All ER thermal generating units may peruse and update on any modification.

Members may discuss/update.

2.6 Shutdown Program of Hydro power plants

Annual maintenance of Rongnichu HEP

- ✓ A reduction in river inflow in coming months is anticipated, particularly during the leanest period in February, we have strategically planned the Annual Maintenance activities for the Rongnichu HEP to coincide with this opportunity.
- ✓ Accordingly, the plant will undergo a complete shutdown from **15th February 2026 to 28th February 2026** to facilitate the required Annual Maintenance work.
- ✓ If the maintenance work is completed earlier or requires additional time the plant will be restored accordingly. Any changes to the schedule will be communicated to you in advance.

Rongnichu may update. Members may discuss.

3. PART-C: ITEMS FOR UPDATE/FOLLOW-UP/INFORMATION

3.1. ER Grid performance during November 2025

The average and maximum consumption of Eastern Region and Max/Min Demand (MW), Energy Export for the month November -2025 were as follows:

AVERAGE CONSUMPTION (MU)	MAXIMUM CONSUMPTION(MU)/ DATE	MAXIMUM DEMAND (MW)	MINIMUM DEMAND (MW)	SCHEDULE EXPORT	ACTUAL EXPORT
		DATE / TIME	DATE / TIME	(MU)	(MU)
455 MU	511 MU, 10.11.2025	24143 MW, 01.11.2025 at 18:01 Hrs.	14209 MW, 17.11.2025 at 02:37 Hrs.	5198	5724

ERLDC/ERPC may highlight the performance of the ER grid.

3.2. Non-Submission of FRC data in stipulated time-frame: ERLDC

Adhering to IEGC clauses 30.8 and 30.10.(a) to 30.10.(q), generating stations within the Eastern region are required to submit essential data to ERLDC within two days of receiving a notification regarding a reportable frequency event. Additionally, according to clause 30.10.(n), all control areas within the eastern region must assess their frequency response characteristics and share the evaluation, along with high-resolution data, with the ERLDC. Therefore, timely submission of primary response data is crucial for compliance with the IEGC.

233rd OCC Decision: -

- All generators were advised to regularly share high resolution data against each reportable frequency event with ERLDC on time to facilitate accurate assessment of FRP for respective control areas.
- All generating utilities were also urged to update the google sheet (link mentioned above) with email address where notifications of reportable events will be shared.

Hence all are again requested to follow the stipulated timeline and submit the data to ERLDC and also fill the google sheet below to include the email address where notifications of reportable events should be sent.

The latest data receipt status is given below: (as on **15.12.2025**):

STATIONS		11-05-2025 16:51 HRS	12-06-2025 13:34 HRS	16-06-2025 11:51 HRS	22-07-2025 19:46 HRS	29-07-2025 14:55 HRS	01-09-2025 14:57 HRS	24-09-2025 11:04 HRS	24-09-2025 11:32 HRS	15-10-2025 12:11 HRS
FSTPP #STG 1 & 2	ISGS									
FSTPP # STG 3	ISGS									
KhSTPP #STG 1	ISGS									
KhSTPP #STG 2	ISGS									
TSTPP #STG 1	ISGS									
Barh stage-1	ISGS									
Barh stage-2	ISGS									
BRBCL	ISGS									
Daripalli	ISGS									
North Karanpura	ISGS									
NPGC	ISGS									
TEESTA V	ISGS									
Dikchu	ISGS									
IBEUL (JSW UTKAL)/INDBHARAT	IPP									
GMR	CPP									
MPL	CPP									
ADHUNIK	CPP									
JITPL	CPP									
TEESTA III	CPP									
Bihar	STATE									
Jharkhand	STATE									
DVC	STATE									
OPTCL	STATE									
WB	STATE									
Updated as on	15.12.2025									
	Received									
	Not Received									
	Plant Out									
	Data freeze at plant									

Hence all are again requested to follow the stipulated timeline and submit the data to ERLDC and also fill in the google sheet below to include the email address where notifications of reportable events should be sent.

https://docs.google.com/spreadsheets/d/1slvAOMQIEQVIMn0LnB78eKMa2sz2QYICZ-sPEpeV_jk/edit?usp=sharing

ERLDC may explain and all SLDCs may update. Members may discuss.

3.3. Regarding Non-Submission of Forecasting Data from States: ERLDC

Clause 2 of Regulation 31 of IEGC 2023 has mandated all the SLDCs to timely submit the demand estimate data to the respective RLDC and RPC.

Current data submission status is given in the table below: Hence it is again requested to all the concerned for timely submission of demand estimation data to ERLDC. This collaboration is essential for effective planning and preparedness to meet the region's electricity demands efficiently and reliably. Latest Forecast and Resource Adequacy Data receipt status at ERLDC is shown below:

4. PART-D: OPERATIONAL PLANNING

4.1. Anticipated power supply position for December-2025

The abstract of peak demand (MW) vis-à-vis availability and energy requirement vis-à-vis availability (MU) for the month of December -2025 is prepared by ERPC Secretariat (**Annexure D.1**) on the basis of LGBR for 2025-26 and feedback of constituents, keeping in view that the units are available for generation and expected load growth etc.

Members may update.

4.2. Major Thermal Generating Units/Transmission Element outages/shutdown in ER Grid (as on 21-12-2025)

SL No	STATION	STATE	AGENCY	UNIT NO	CAPACITY (MW)	REASON(S)	OUTAGE DATE
1	TSTPP	ODISHA	NTPC	1	500	Annual Overhauling	15-Dec-2025
2	NABINAGAR(NPGC)	BIHAR	NTPC	1	660	Annual Overhauling	01-Dec-2025
3	ADHUNIK	JHARKHAND	APNRL	1	270	Capital Overhauling	30-Nov-2025
4	JIPL	ODISHA	JIPL	1	600	Annual overhauling	30-Nov-2025
5	KBUNL	BIHAR	NTPC,BSPHCL	1	195	Annual overhauling	15-Nov-2025
6	KODERMA	DVC	DVC	1	500	Annual Overhauling	17-Dec-2025
7	KOLAGHAT	WEST BENGAL	WBPDCCL	3	210	Capital Overhauling	11-Dec-2025
8	NABINAGAR(BRBC L)	BIHAR	NTPC	3	250	Tripped on boiler tube leakage	20-Dec-2025
9	NABINAGAR(BRBC L)	BIHAR	NTPC	1	250	generator stator earth fault	04-Dec-2025
10	BAKRESHWAR	WEST BENGAL	WBPDCCL	5	210	Miscellaneous maintenance job	19-Dec-2025
11	Buxar TPP	BIHAR	SJVN	1	660	Low Coal Stock	14-Dec-2025

All Generating stations are requested to update expected restoration time and reason outage to ERLDC/ERPC on weekly basis in case of any change at their end.

Major Generating stations Out on Reserve Shutdown due to low system demand:

SL No	STATION	STATE	AGENCY	UNIT NO	CAPACITY (MW)	REASON(S)	OUTAGE DATE
1	SOUTHERN	WEST BENGAL	CESC	2	67.5	Reserve Shut Down	12-Nov-2025
2	SOUTHERN	WEST BENGAL	CESC	1	67.5	Reserve Shut Down	03-Oct-2025

Hydro Unit Outage Report: -

S. NO	STATION	STATE	AGENCY	UNIT NO	CAPACITY (MW)	REASON(S)	OUTAGE DATE
1	TEESTA STG III Hep	SIKKIM	TUL	1 to 6	200 X6	Sudden cloudburst at glacier fed LOHNAK Lake followed by huge inrush of water in Teesta River and damage of Teesta III Dam & downstream Powerhouses	04-Oct-2023
2	TEESTA STG III Hep	SIKKIM	TUL				
3	TEESTA STG III Hep	SIKKIM	TUL				
4	TEESTA STG III Hep	SIKKIM	TUL				
5	TEESTA STG III Hep	SIKKIM	TUL				
6	TEESTA STG III Hep	SIKKIM	TUL				
7	TEESTA HPS	SIKKIM	NHPC	1 to 3	170 X3	Sudden cloudburst at glacier fed LOHNAK Lake followed by huge inrush of water in Teesta River and damage of Teesta III Dam & downstream Powerhouses	04-Oct-2023
8	TEESTA HPS	SIKKIM	NHPC				
9	TEESTA HPS	SIKKIM	NHPC				
10	BURLA HPS/HIRAKUD I	ODISHA	OHPC	7	37.5	Abnormal sound from slip ring area	18-Sep-2025

11	CHIPLIMA HPS / HIRAKUD II	ODISHA	OHPC	1	24	Capital Overhauling	15-Dec-2023
12	BALIMELA HPS	ODISHA	OHPC	5	60	Repair and maintenance work	16-Jan-2025
13	RENGALI HPS	ODISHA	OHPC	5	50	Annual Overhauling	01-Dec-2025
14	BALIMELA HPS	ODISHA	OHPC	4	60	Annual maintenance	25-Oct-2025
15	CHIPLIMA HPS / HIRAKUD II	ODISHA	OHPC	1	24	Capital Overhauling	15-Dec-2023
16	SUBARNREKHA HPS	JHARKHAND	JUUNL	1	65	Damage in civil structure near penstock blocking water flow.	20-Mar-2025
17	SUBARNREKHA HPS	JHARKHAND	JUUNL	2	65	Damage in civil structure near penstock blocking water flow.	20-Mar-2025
18	RENGALI HPS	ODISHA	OHPC	5	50	Annual Overhauling	01-Dec-2025
19	CHIPLIMA HPS / HIRAKUD II	ODISHA	OHPC	1	24	Capital Overhauling	15-Dec-2023

4.3. Long outage report of transmission Element (MORE THAN 01 WEEK) (As on 21.12.2025):

Transmission Element / ICT	Outage From	Reasons for Outage
220/132 KV 100 MVA ICT II AT LALMATIA	22-01-2019	220/132KV, 100MVA Transformer (NTPC side) is charged on 07.02.2024 from HV side on no load. Now, it is in idle charged condition
220KV-FSTPP-LALMATIA-I	21-04-2021	Two nos. of tower collapsed on 29.05.2024 near to Lalmatia GSS in the Loc. No. 246 & 247. Presently 220 kV Farakka-Lalmatia line is charged(from loc no 241 to loc 84) at 132 kV voltage level for anti-theft purpose by tapping at loc. No. 100-101.
132KV-BARHI-RAJGIR-1	25-03-2023	Dismantling of tower no. 227, 228, and 229 crossing the premises of Mahabodhi Cultural centre along with Destraining of conductor of both circuits and Earthwire between tension tower no. 218-237 in same line.

132KV-NALANDA-BARHI(DVC)-1	25-03-2023	Dismantling of tower no. 227, 228, and 229 crossing the premises of Mahabodhi Cultural centre along with Destraining of conductor of both circuits and Earthwire between tension tower no. 218-237 in same line.
400KV-RANGPO-TEESTA-V-1	04-10-2023	Tower near gantry of Teesta V powerhouse collapsed due to sudden cloudburst at glacier fed LOHNAK Lake followed by huge inrush of water in TEESTA river and damage of Teesta III Dam & downstream Powerhouses
400KV-RANGPO-TEESTA-V-2	04-10-2023	Tower near gantry of Teesta V powerhouse collapsed due to sudden cloudburst at glacier fed LOHNAK Lake followed by huge inrush of water in TEESTA river and damage of Teesta III Dam & downstream Powerhouses
132KV-CHANDIL-MANIQUEI-1	05-06-2024	Power assistance withdrawn
400KV/220KV 315 MVA ICT 1 AT NORTH KARANPURA	12-09-2024	Tripped on Differential protection
132KV-MADHEPURA (BH)-SAHARSA(PMTL)-1	23-09-2024	To control loading on 132kv Madhepura-Sahrsa line
400KV/220KV 315 MVA ICT 1 AT TSTPP	01-11-2024	Tripped on PRD protection
132KV-PATRATU-PATRATU-1	16-11-2024	Diversion/Heightening of line due to inadequate clearance from under construction railway Line by PVUNL
400KV/220KV 315 MVA ICT 2 AT MEJIA-B	20-01-2025	Tripped during charging of ICT#1 bay with cable from 220 kv GIS side
400KV/220KV 315 MVA ICT 1 AT LATEHAR	22-04-2025	R phase LA of 400/220/33 KV ICT - I got bursted
400KV/220KV 315 MVA ICT 2 AT LATEHAR	16-04-2025	Transformer REF protection operated
400KV/220KV 315 MVA ICT 2 AT KODERMA	02-06-2025	Transformer Differential Protection operated
132KV-RAXAUL(NEW)-PARWANIPUR-2	03-07-2025	To carry out Gantry erection works at near by Parsauni 132/66/33 kV Substation of Nepal
132KV-RAXAUL(NEW)-PARWANIPUR-1	03-07-2025	To carry out Gantry erection works at near by Parsauni 132/66/33 kV Substation of Nepal
220KV-RAJARHAT-NEW TOWN(AA-II)-1	10-07-2025	Emergency shutdown for BCU replacement work at Rajarhat. Charging attempted but tripped on SOTF. B_ph cable faulty
220KV-PATNA-KHAGAUL-1	02-08-2025	Tower No. 63 has bent significantly on one side
400KV/220KV 315 MVA ICT 2 AT KEONJHOR(PG)	05-08-2025	Buchholz relay operated

400KV MAIN BUS - 2 AT DIKCHU	05-08-2025	Bus bar protection operated
400KV-DIKCHU-RANGPO-2	05-08-2025	Damaged insulator replacement work. While charging the line bus bar protection operated at Dikchu
400KV-ARAMBAGH-NEW PPSP-2	04-01-2025	Damage in GIS chamber at new ppsp ss for Arambag ckt.Expected in January 2026
220KV-PATNA-KHAGAUL-1	24.09.2025	LBB relay operated during rectification of DC grounding defect by M/S KRR at GSS khagaul. Earlier w.e.f 02-08-2025 12:06 Hrs, Tower No. 63 has bent significantly on one side
220KV-CHANDAUTI (PMTL)-BODHGAYA-2	13.10.2025	Emergency tree trimming work
220KV-CHANDAUTI (PMTL)-BODHGAYA-1	13.10.2025	Emergency tree trimming work
132KV-PATRATU-PATRATU-2	18-10-2025	Power support withdrawn, open from DVC end
220KV-DALTONGANJ-LATEHAR(JUSNL)-2	23-10-2025	To avoid overloading of 400/200 kV ICT-I at Latehar
400KV/220KV 315 MVA ICT 1 AT INDRAVATI HEP	25-10-2025	Due to oil leakage from Tan delta test tap of R phase 400 kV Bushing
220KV-BIDHANNAGAR-WARIA-1	29-10-2025	To control loading of 220 kV Waria-Mejia D/C (Anti-theft charged from Waria end.)
220KV-BIDHANNAGAR-WARIA-2	29-10-2025	Initially line was opened to control line loading. In between B-phase CT Blast at Bidhannagar end. Now Line is charged as anti-theft from Waria end to control loading of 220 kV Waria-Mejia D/C.
132KV-CHANDAULI-KARMANASA-1	06-11-2025	Power assistance not required
HVDC 800KV ALIPURDUAR (PG) Pole 3	11-11-2025	For system requirement due to lean hydro season.
HVDC 800KV ALIPURDUAR (PG) Pole 4	11-11-2025	For system requirement due to lean hydro season.
220KV-BALIMELA-UPPER SILERU-1	21-11-2025	Idle charged from U. Sileru end. Power drawl by Odisha halted due to non-concurrence by Andhra Pradesh.
LILO of Talcher Meramundali at Angul	21-11-2025	Reconductoring work,400 kV Talcher-Meeramundali-2 has been made direct bypassing LILO part.
220KV/132KV 160 MVA ICT 4 AT MALDA	19-12-2025	CRP Upgradation work
400KV-BINAGURI-TALA-4	30-11-2025	H/T ON VOLTAGE REGULATION
400KV-FSTPP-KHSTPP-1	02-12-2025	Reconductoring works by HTLS Conductor.

220KV-BUDHIPADAR-KORBA-2	08-12-2025	For erection of online tower line ckt-2(earlier ckt-3)
220KV-GAYA(PG)-BODHGAYA-4	11-12-2025	Bodhgaya end relay: Y_N fault, F Current 5.3 kA, F Distance 23.5 km
220KV-KATAPALLI-BOLANGIR(PG)-1	20-12-2025	To restrict loading of 220kV Budhipadar-Lapanga ckt-1&2 due to hotspot observed in 220kV Budhipadar-Lapanga ckt-1.
400KV/220KV 315 MVA ICT 2 AT TSL KALINGANAGAR	16-12-2025	Emergency shutdown to attend oil leakage

Transmission licensees/ Utilities are requested to update expected restoration date & work progress regarding restoration regularly to ERPC/ERLDC on monthly basis by 5th of each month so that status of restoration can be reviewed in OCC. Utilities are also requested to update outage of any elements within their substation premises like isolator/breaker to ERPC/ERLDC regularly. (Reported as per Clause 5.2(e) of IEGC).

OCC Decision:

Members noted.

4.4. Commissioning of new units and transmission elements in Eastern Grid in the month of November-2025.

The details of new units/transmission elements commissioned in the month of November-2025 based on the inputs received from beneficiaries:

NEW ELEMENTS COMMISSIONED DURING NOVEMBER, 2025							
उत्पादन इकाइयाँ / GENERATING UNITS							
Sl. No.	स्थान Location / Pooling Station	मालिक/यूनिट का नाम OWNER/UNIT NAME	यूनिट संख्या/स्रोत Unit No/Sou rce	संकलित क्षमता (मेगा वाट) Capacity added (MW)	कुल/स्थापित क्षमता (मेगावाट) Total/Installed Capacity (MW)	दिनांक DATE	टिप्पणी Remarks क्र
1	ACPP , Angul, Odisha	JSL(Jindal steel Limited)/ACPP	Unit-1/Coal	525	525	03-11-2025	This is an intrastate captive generator connected to the JSPL system, which is further interconnecte

							d to the Meramandali substation of OPTCL.
--	--	--	--	--	--	--	---

आई.सी.टी./जी.टी./एस.टी / ICTs/ GTs / STs

क्र. Sl. No.	एजेंसी/मालिक Agency/Owner	उप-केन्द्र SUB-STATION	आईसीटी संख्या ICT NO	वोल्टेज (केवी) Voltage Level (kV)	क्षमता (एमवीए) CAPACITY (MVA)	दिनांक DATE	टिप्पणी Remarks
1	PVUNL	PVUNL	ST-01	400/11	144	01-11-2025	
2	JSL	JSPL	ST-01	400/34.5	160	13-11-2025	
3	(Jindal steel Limited)	ACPP II	ST-02	400/11	80	25-11-2025	
4		JSPL	ST-03	400/34.5	230	21-11-2025	
5		JSPL	ST-03	400/34.5	160	25-11-2025	
6		JSPL	ST-02	400/34.5	160	11-11-2025	
7		ACPP II	GT-01	400/21	630	03-11-2025	

NIL

प्रेषण लाइन / TRANSMISSION LINES

क्र. Sl. No.	एजेंसी/मालिक Agency/Owner	लाइन का नाम LINE NAME	लंबाई (किमी) Length (KM)	कंडक्टर प्रकार Conductor Type	दिनांक DATE	टिप्पणी Remarks
NIL						

लिलो / प्रेषण लाइन की पुनर्व्यवस्था / LILO/RE-ARRANGEMENT OF TRANSMISSION LINES

क्र. Sl. No.	एजेंसी/मालिक	लाइन का नाम / लिलो पर Line Name/LILO at	लंबाई (किमी)	कंडक्टर प्रकार Conductor Type	दिनांक DATE	टिप्पणी Remarks
NIL						

	Agency/Owner		Length (KM)			
1	PGCIL+DVC	400KV NEW RANCHI-RAGHUNATHPUR-1	230.76	Quad Moose	17-11-2025	This circuit is formed by the 400 kV Ranchi–Raghunathpur–2 line (155 km) and the 400 kV Ranchi–New Ranchi–3 line (78.5 km), after bypassing the Ranchi substation.
2	PGCIL+DVC	400KV NEW RANCHI-RAGHUNATHPUR-2	231	Quad Moose	17-11-2025	This circuit is formed by the 400 kV Ranchi–Raghunathpur–3 line (155 km) and the 400 kV Ranchi–New Ranchi–4 line (78.5 km), bypassing the Ranchi substation
3	PGCIL Odisha Projects	400 KV TSTPP– MERAMUNDALI CKT–2 (AFTER BYPASSING ANGUL SUBSTATION)	51.608	ACSR Moose	20-11-2025	
4	PGCIL ERTS -1	NORMALIZATION OF 400 KV NEW PURNEA– FARAKKA CKT-1 AND NEW PURNEA– GOKARNA CKT-1	171.623 248.713	Tripple ACSR Snowbird Conductor	22-11-2025 22-11-2025	Normalization of the 400 kV New Purnea–Farakka and New Purnea–Gokarna lines, which

						are currently in service through temporary interconnection as the 400 kV Farakka–Gokarna circuit.
--	--	--	--	--	--	---

बस/लाइन रिएक्टर / BUS/LINE REACTOR

क्र. Sl. No.	एजेंसी/मालिक Agency/Owner	एलेमेंट का नाम Element Name	उप-केन्द्र SUB-STATION	वोल्टेज (केवी) Voltage Level (kV)	दिनांक DATE	टिप्पणी Remarks
1	PVUNL	125 MVAR, 400 KV BUS REACTOR - 1 AT PVUNL	PVUNL	125	14-11-2025	

NIL

बस / BUS

क्र. Sl. No.	एजेंसी/मालिक Agency/Owner	एलेमेंट का नाम Element Name	उप-केन्द्र SUB-STATION	वोल्टेज (केवी) Voltage Level (kV)	दिनांक DATE	टिप्पणी Remarks
1	JSL(Jindal steel Limited)	400KV MAIN BAY OF 160MVA ST-3 AT JSPL	JSPL	400	25-11-2025	
2	JSL(Jindal steel Limited)	400KV MAIN BAY OF 630 MVA GT-1 AT ACPP II	JSPL	400	03-11-2025	
3	JSL(Jindal steel Limited)	BAY NO-408 AT ACPP-II	ACPP	400	05-11-2025	
4	JSL(Jindal steel Limited)	BAY NO-409 AT ACPP-II	ACPP	400	05-11-2025	
5	JSL(Jindal steel Limited)	400 KV MAIN BAY OF 160MVA ST-1 AT JSPL	JSPL	400	13-11-2025	
6	JSL(Jindal steel Limited)	400KV MAIN BAY OF 160MVA ST-1 AT JSPL	JSPL	400	13-11-2025	
7	JSL(Jindal steel Limited)	400KV MAIN BAY OF 160MVA ST-2 AT JSPL	JSPL	400	11-11-2025	

8		400KV MAIN BAY OF 160MVA ST-4 AT JSPL	JSPL	400	06-11- 2025	
9	PVUN L	400KV MAIN BAY OF 125MVAR B/R-1 AT PVUNL	PVUN L	400	14-11- 2025	
10	PVUN L	400KV TIE BAY OF 125MVAR B/R-1 AND 125MVAR B/R-2 AT PVUNL	PVUN L	400	14-11- 2025	
NIL						
एच.वी.डी.सी/ए.सी फिल्टर बैंक/फैक्ट्स डिवाइस संबद्ध प्रणाली / HVDC /AC Filter bank / FACTS DEVICE associated System						
क्र. Sl. No.	एजेंसी/ मालि क Agen cy/O wner	एलेमेंट का नाम Element Name	उप- केन्द्र SUB- STATI ON	वोल्टेज (केवी) Voltage Level (kV)	दिनांक DATE	टिप्पणी Remarks
NIL						

NEW ELEMENTS COMMISSIONED DURING September, 2025							
उत्पादन इकाइयाँ / GENERATING UNITS							
S I. N O.	स्थान Location / Pooling Station	मालिक/यूनिट का नाम OWNER/UNIT NAME	यूनि ट सं ख्या/ स्रोत Unit No/ Sou rce	संकलित क्षमता (मेगावाट) Capacity added (MW)	कुल/स्थापित क्षमता (मेगावाट) Total/Installe d Capacity (MW)	दिनांक DATE	टिप्पणी Remarks क्र
NIL							
आई.सी.टी./जी.टी./एस.टी / ICTs/ GTs / STs							
क्र S I.	एजेंसी/मा लिक Agency/O wner	उप-केन्द्र SUB- STATION	आईसीटी संख्या ICT NO	वोल्टे ज (केवी)	क्षमता (एमवीए) CAPACITY (MVA)	दिनांक DATE	टिप्पणी Remarks

N o.				Volt age Leve l (kV)			
1.	JSL (Jindal steel Limited) (Intra- state Generator under Odisha)	ACPP II	ST 1	400/ 11kV	80	25-10- 2025 18:55	The Angul Captive Power Plant (ACPP II- 2x525 MW), consisting of two generating units of 525 MW each, is a captive power generating station located at Angul. It is connected to the JSPL system, which is further interconnected with the 400 kV Meeramandali substation.

प्रेषण लाइन / TRANSMISSION LINES

क्र . S I. N O.	एजेंसी/मा लिक Agency/O wner	लाइन का नाम LINE NAME	लंबाई (किमी) Length (KM)	कंडक्टर प्रकार Conductor Type	दिनांक DATE	टिप्पणी Remarks
1	JSL (Jindal steel Limited)	400KV-JSPL-ACPP II- 1	4.7	Twin ACSR Moose	25-10- 2025 14:15	
2	JSL(Jindal steel Limited)	400KV-JSPL-ACPP II- 2	4.7	Twin ACSR Moose	25-10- 2025 17:09	

लिलो / प्रेषण लाइन की पुनर्व्यवस्था / LILO/RE-ARRANGEMENT OF TRANSMISSION LINES

क्र . S I. N O.	एजेंसी/मा लिक Agency/O wner	लाइन का नाम / लिलो पर Line Name/LILO at	लंबाई (किमी) Length (KM)	कंडक्टर प्रकार Conductor Type	दिनांक DATE	टिप्पणी Remarks
--------------------------------	--------------------------------------	---	-----------------------------------	-------------------------------------	----------------	--------------------

N o.						
1	PGCIL ER-I	400KV-FSTPP- GOKARNA (N Purnea bypass)	299.5	Snow Birds	02-10- 2025 14:17	Temporary arrangement of 400 kV New Purnea - Farakka & 400 kV New Purnea- Gokarna line after bypassing New Purnea through jumping at Tower No. - 1063
बस/लाइन रिएक्टर / BUS/LINE REACTOR						
क्र . S I. N O.	एजेंसी/मा लिक Agency/O wner	एलेमेंट का नाम Element Name	उप-केन्द्र SUB- STATIO N	वोल्टेज (केवी) Voltage Level (kV)	दिनांक DATE	टिप्पणी Remarks
NIL						
बस / BUS						
क्र . S I. N O.	एजेंसी/मा लिक Agency/O wner	एलेमेंट का नाम Element Name	उप-केन्द्र SUB- STATIO N	वोल्टेज (केवी) Voltage Level (kV)	दिनांक DATE	टिप्पणी Remarks
1	JSL(Jindal steel Limited)	ACPP II - 400KV - Bus 1	ACPP II	400	30-10- 2025 04:57	The Angul Captive Power Plant (ACPP II- 2x525 MW), consisting of two generating units of 525 MW each, is a captive power generating station located at Angul. It is connected to
2	JSL(Jindal steel Limited)	ACPP II - 400KV - Bus 2	ACPP II	400	30-10- 2025 04:58	

						the JSPL system, which is further interconnected with the 400 kV Meeramandali substation.
एच.वी.डी.सी/ए.सी फिल्टर बैंक/फैक्ट्स डिवाइस संबद्ध प्रणाली / HVDC /AC Filter bank / FACTS DEVICE associated System						
क्र . S I. N O.	एजेंसी/मालिक Agency/O wner	एलेमेंट का नाम Element Name	उप-केन्द्र SUB- STATIO N	वोल्टेज (केवी) Voltage Level (kV)	दिनांक DATE	टिप्पणी Remarks
NIL						
बे / BAYS						
क्र . S I. N O.	एजेंसी/मालिक Agency/O wner	एलेमेंट का नाम Element Name	उप-केन्द्र SUB- STATIO N	वोल्टेज (केवी) Voltage Level (kV)	दिनांक DATE	टिप्पणी Remarks
1	Limited JSL(Jindal steel)	400KV MAIN BAY OF JSPL-2 AT ACPP II	ACPP II	400	25-10-2025 17:09	The Angul Captive Power Plant (ACPP II-2x525 MW), consisting of two generating units of 525 MW each, is a captive power generating station located at Angul. It is connected to the JSPL system, which is further
2	JSL(Jindal steel Limited)	400KV MAIN BAY OF JSPL-1 AT ACPP II	ACPP II	400	25-10-2025 15:22	
3	JSL(Jindal steel Limited)	400KV MAIN BAY OF ACPP II-2 AT JSPL	JSPL	400	26-10-2025 14:57	
4	JSL(Jindal steel Limited)	400KV MAIN BAY OF ACPP II-1 AT JSPL	JSPL	400	26-10-2025 14:13	
5	JSL(Jindal steel Limited)	400KV BUS SECTIONALIZER BAY OF (MAIN BUS - 2 AND EXTENDED	JSPL	400	25-10-2025 16:26	

		GIS MAIN BUS - 2) AT JSPL				interconnected with the 400 kV Meeramandali substation.
6	JSL(Jindal steel Limited)	400KV BUS SECTIONALIZER BAY OF (MAIN BUS - 1 AND EXTENDED GIS MAIN BUS - 1) AT JSPL	JSPL	400	25-10-2025 12:39	

Members may note.

4.5. UFR operation during the month of November 2025

Frequency profile for the month as follows:

MONTH	MAX	MIN	% LESS IEGC BAND	% WITHIN IEGC BAND	% MORE IEGC BAND
	(DATE/TIME)	(DATE/TIME)			
November 2025	50.4 Hz on 28-11-25 at 06:02 Hrs.	49.54 Hz on 21-11-25 at 17:22 Hrs.	5.7	79.4	14.9

Hence, no report of operation of UFR has been received from any of the constituents.

Members may note.

F.No.22/41/2023-OM (269407)

Government of India

Ministry of Power

Shram Shakti Bhawan, Rafi Marg
New Delhi, the 1st February, 2024

To,

All Additional Chief Secretaries / Principal Secretaries of Power / Energy
CMDs of all Distribution Companies

Subject:- Shifting of agricultural load from Non-Solar hours to Solar hours

Sir,

In order to combat global warming, it is necessary to shift from coal based power generation to Renewables. India has pledged that by 2030, it will have 50% of its installed capacity from non fossil (Renewable) sources. Total installed capacity of Renewable energy (RE) is currently 180 GW. RE capacity of 78935 MW is currently under construction which includes 50056 MW of solar projects. By the end of 2023-24, there will be a total 79349 MW of installed solar power capacity in the country. By 2030, we shall have 500 GW installed capacity from non fossil sources which will includes 292.5 GW of Solar and 99.9 GW of Wind.

The country's power demand is increasing at a rapid pace. In 2014, it was 136 GW. Today, it is 243 GW. The demand will keep growing at a rapid pace as India's economy grows.

During peak demand of 243 GW, the total demand was met with no shortfall during solar hours. During non-solar hours, there was a shortfall of 8000 to 9000 MW. It

is expected that the demand will continue growing at a rapid pace because of the increase in the pace of growth of the economy. Thermal capacity addition cannot keep pace – because the gestation period of constructing a thermal power plant is 6 to 7 years. Renewable Energy – especially solar – has a lower gestation period – so the increase in solar capacity will keep pace with the growth in demand. This will ensure that there will be no shortage of power during solar hours. Keeping all factors in view, it has been decided that agricultural load be shifted to solar hours. This will have the following advantages:

- i- The farmers will be able to irrigate their fields during daylight hours.
- ii- This will prevent depletion and help in conservation of precious ground water resource.
- iii- Solar power is cheaper than thermal / hydro – so the cost of supply during daylight hours is cheaper – so the cost of power for irrigation will come down.

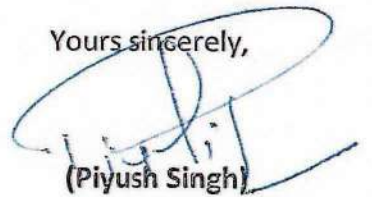
There shall be no curtailment in the hours of supply for agriculture. The farmers will keep getting the same number of hours of supply which they are getting now. Because of the large capacity additions in RE, there shall be no shortage of Solar / RE during the solar hours.

It is requested that the shift in agricultural load to solar hours be implemented by end of March, 2024. Some States have reported constraints in transmission / distribution because of which the shift could be delayed. In such cases, the shift can be in phases. The transmission and distribution bottlenecks can be addressed by using funds from the RDSS to separate agriculture feeders. The agriculture feeders can be solarised in the RESCO mode under Kusum. This will do away with the transmission and distribution constraints, reduce the cost of supply for agriculture and reduce the subsidy burden on the State Government. This is the route most States have adopted. This does not entail any expenditure by the State Government, because the solarisation is done in the RESCO mode with subsidy from Government of India. It is requested that the shift in agricultural load to solar hours be operationalised as soon as possible because the

demand – which is already 12 to 15 thousand megawatts more than last year on a daily basis – is likely to increase especially as the year progresses.

Further, as it is proposed to shift to Time of Day (TOD) tariff, under which tariff during solar hours will be less, It may be also analyzed as to what other load can be shifted to solar hours; and this may be done.

Yours sincerely,



(Piyush Singh)

Joint Secretary

Copy to:

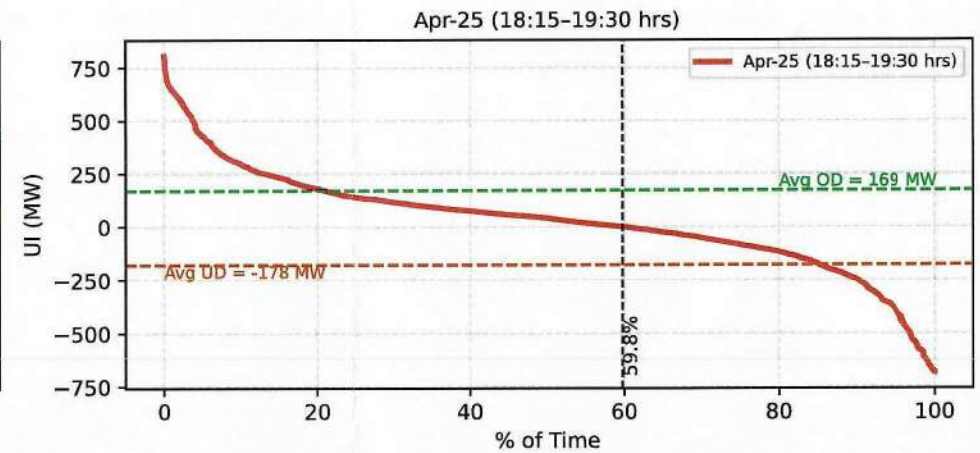
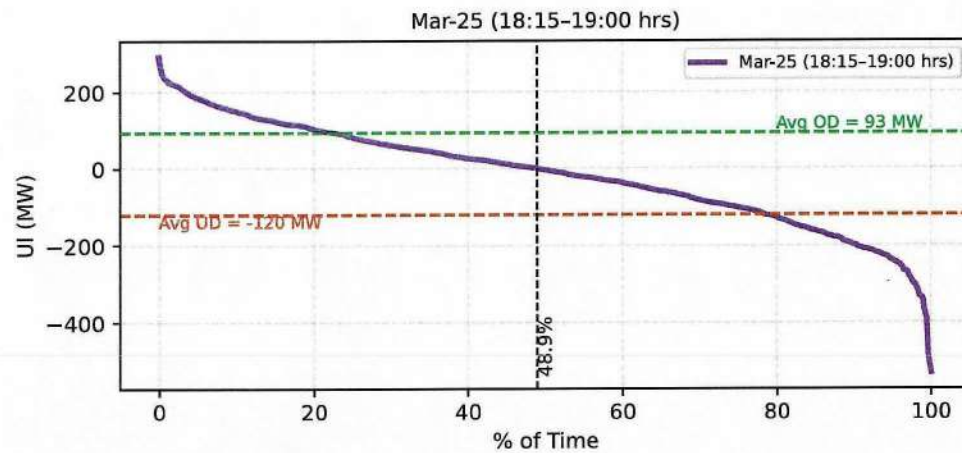
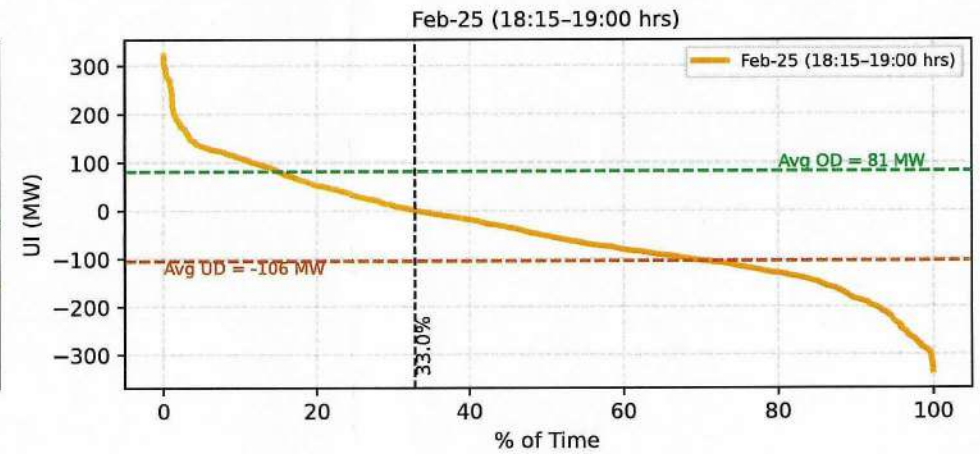
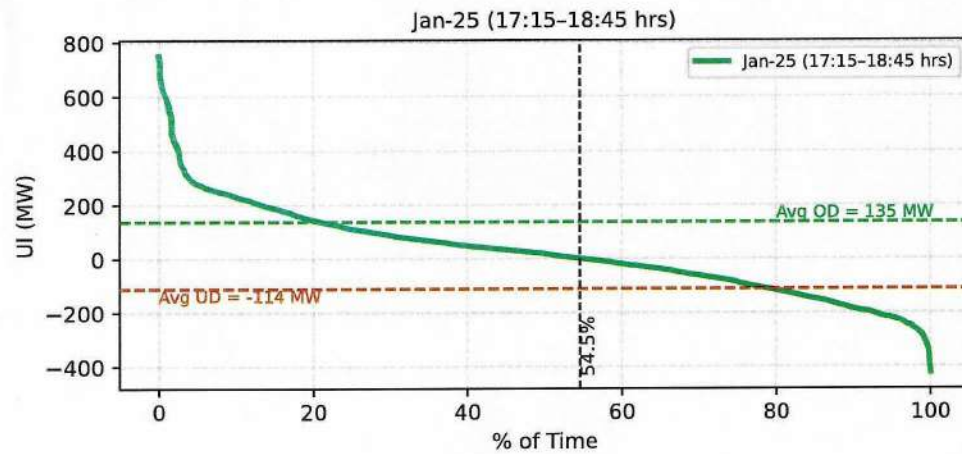
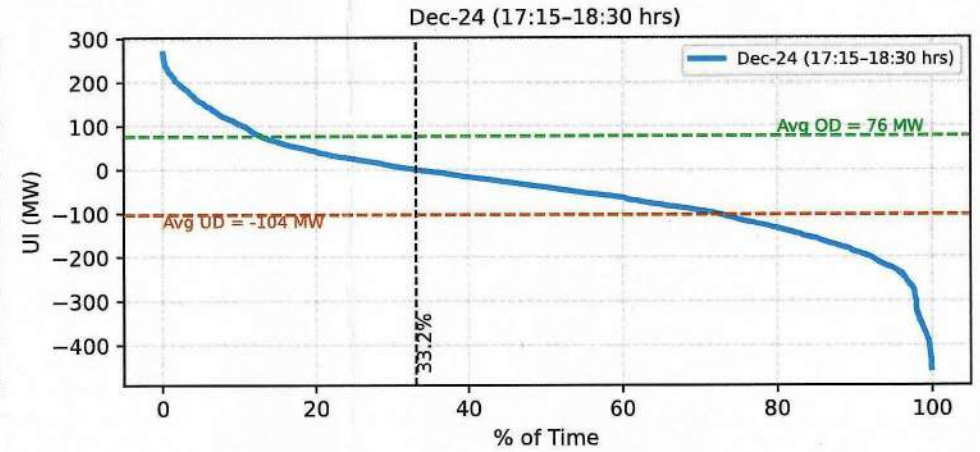
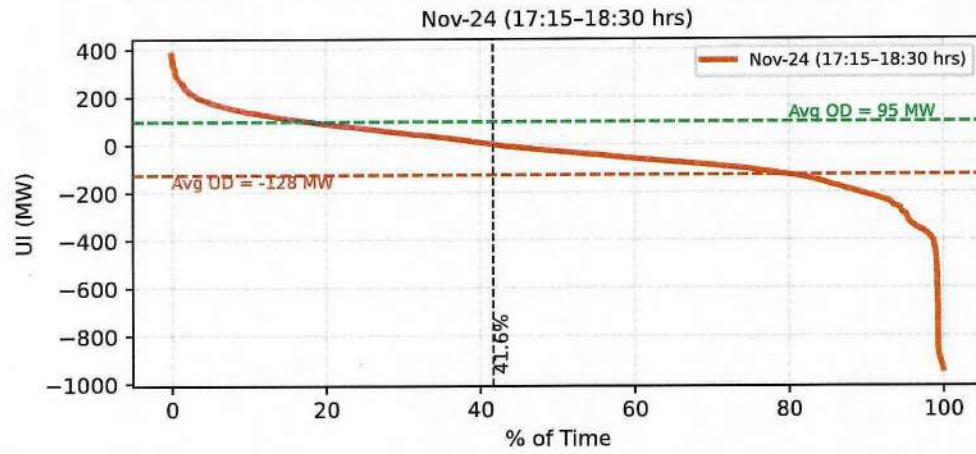
1. The Chairman, CEA
2. Secretary, CERC / FOR, New Delhi.
3. Secretary (Energy / Power), All State Governments / UTs
4. All State Electricity Regulatory Commissions

Copy for information to :-

1. PS to Hon'ble Minister for Power & MNRE.
2. APS to Hon'ble MoSP.
3. Sr. PPS to Secretary (Power).
4. All Addl. Secretaries / Joint Secretaries / EA / CE, MoP.
5. All Directors / Deputy Secretaries, MoP.

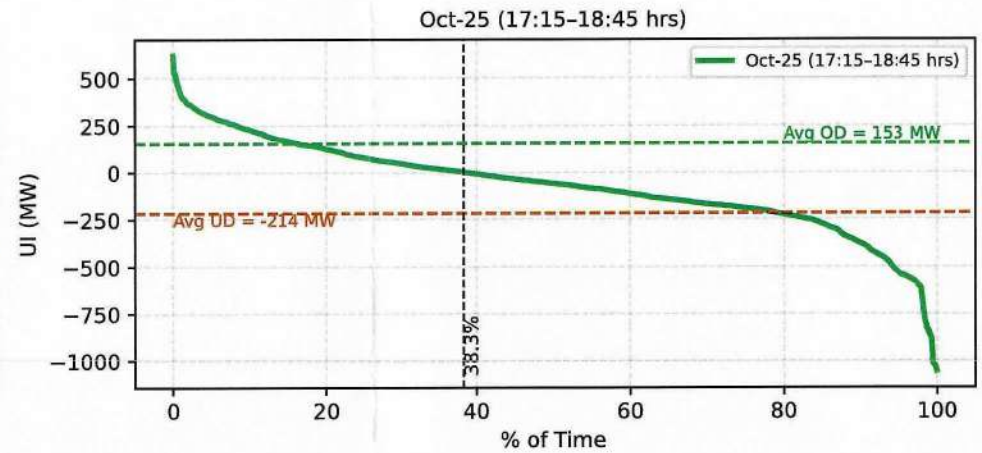
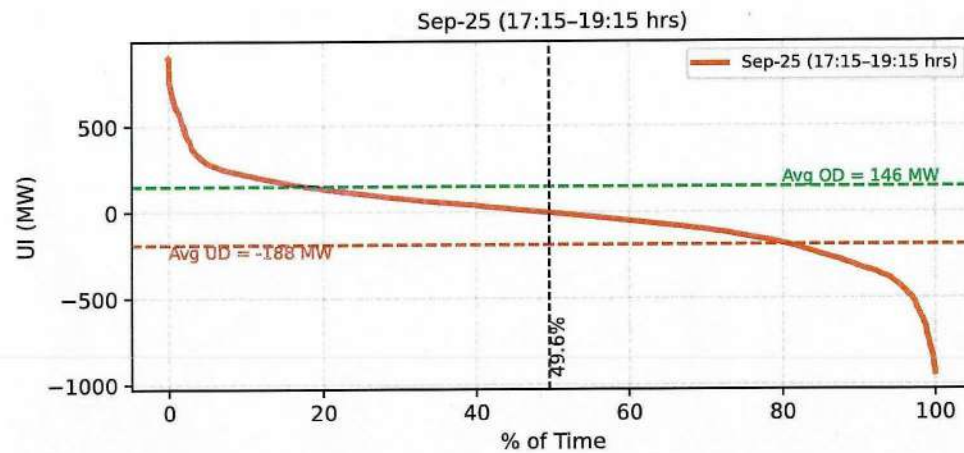
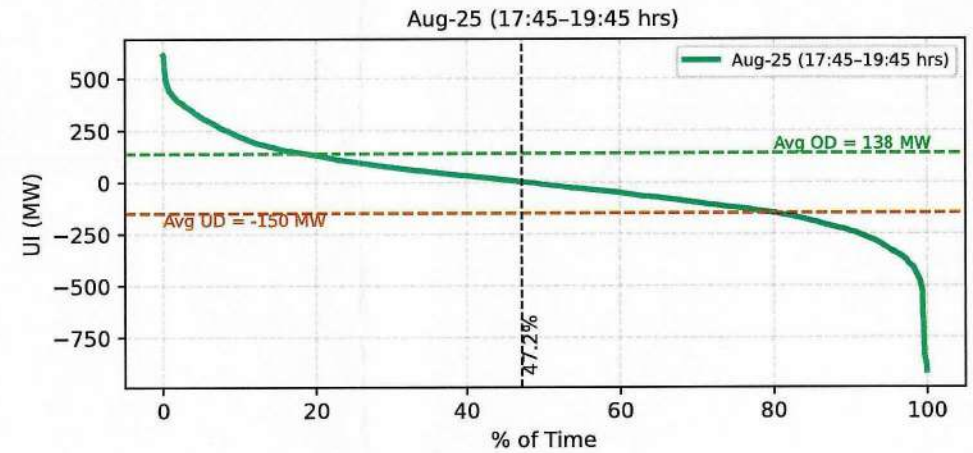
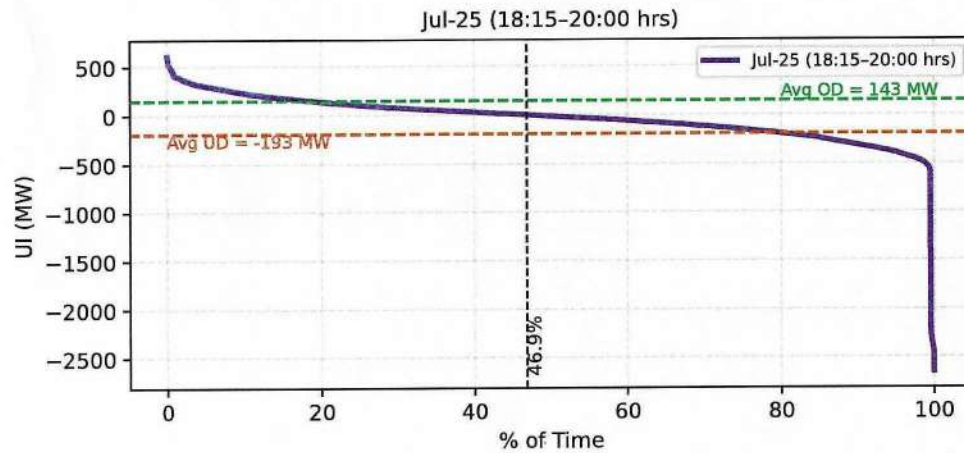
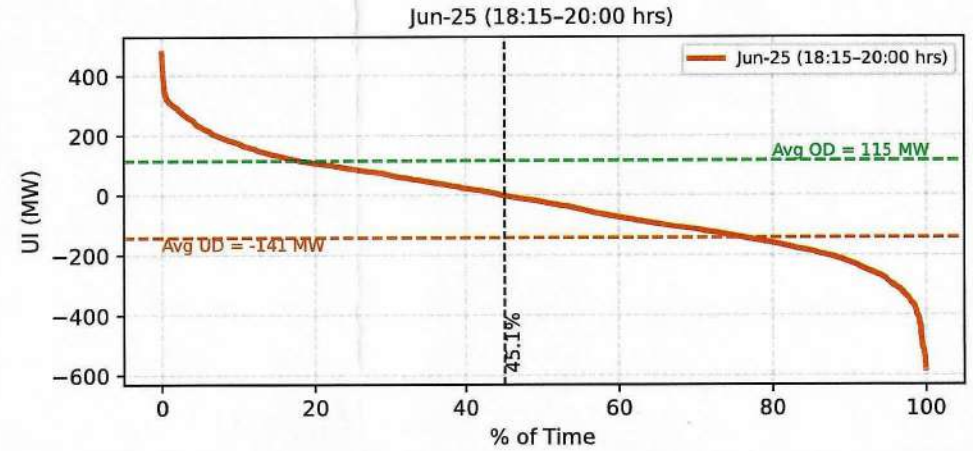
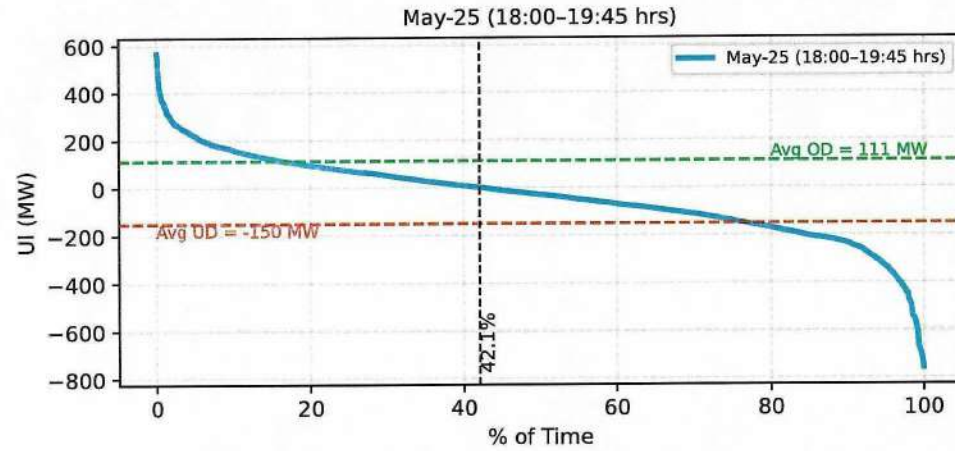
BIHAR_UI - Duration Curve during All India Evening Ramp (Median OD - 46%)

Annexure-I



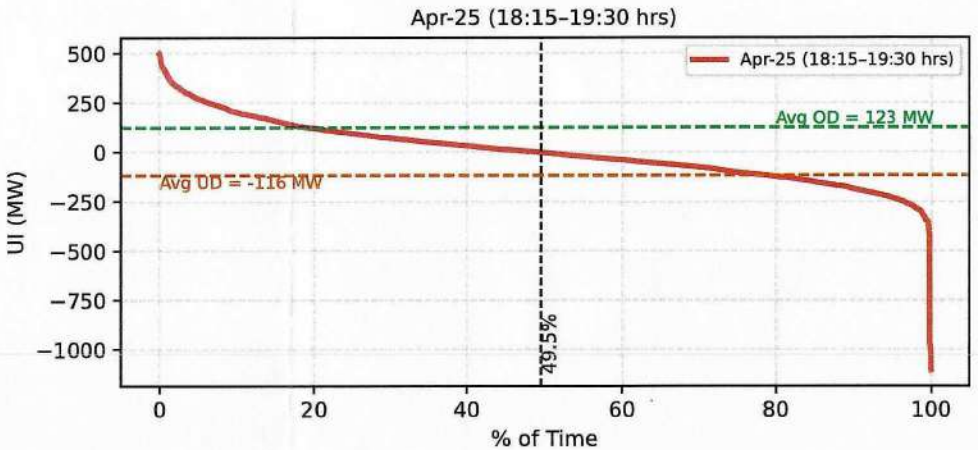
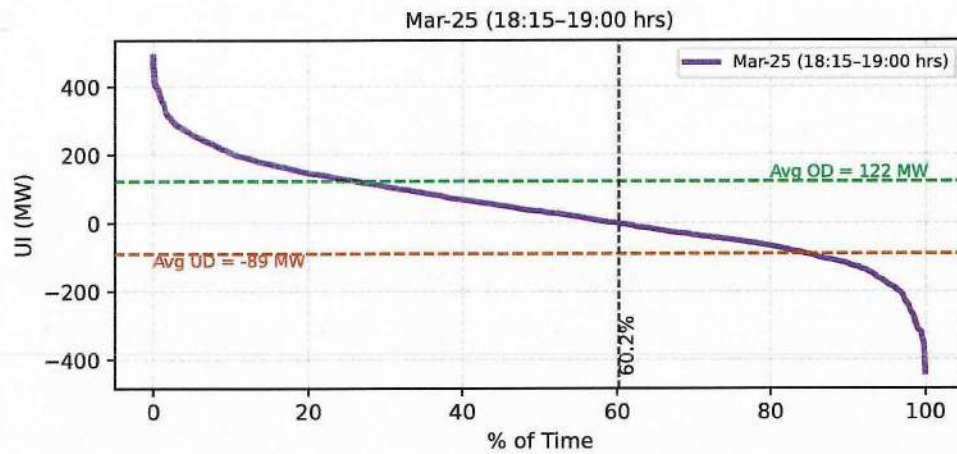
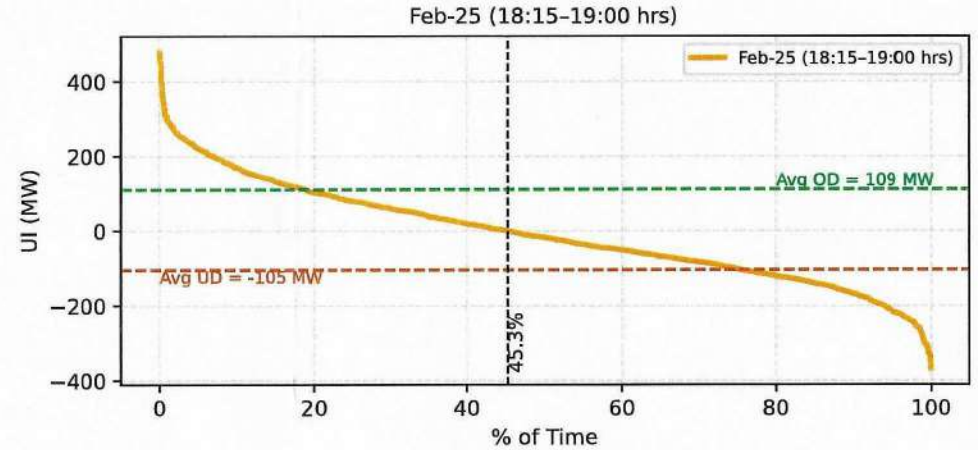
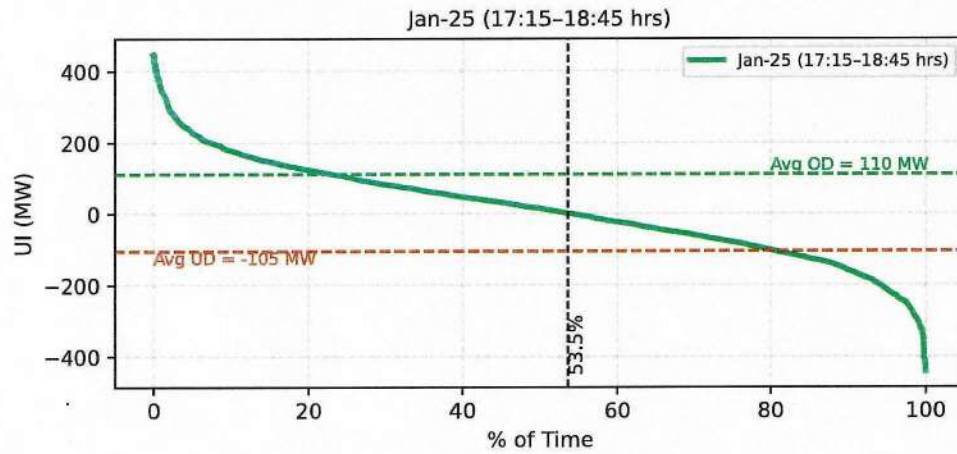
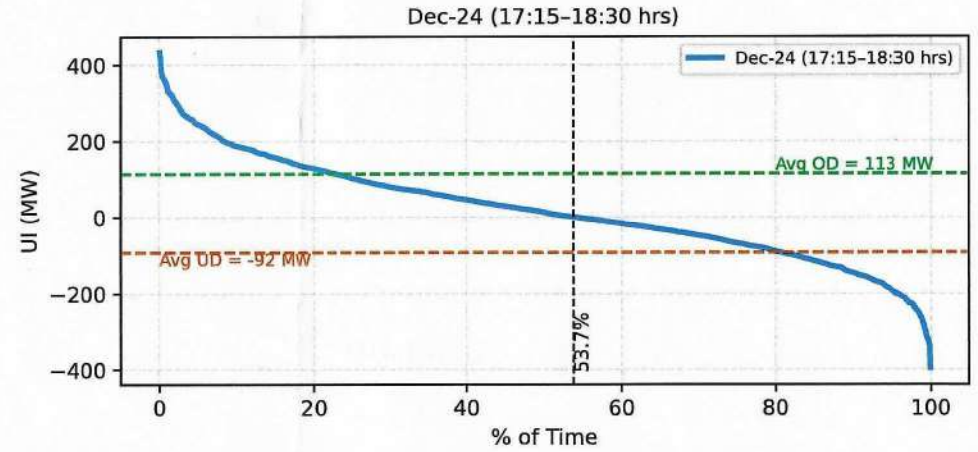
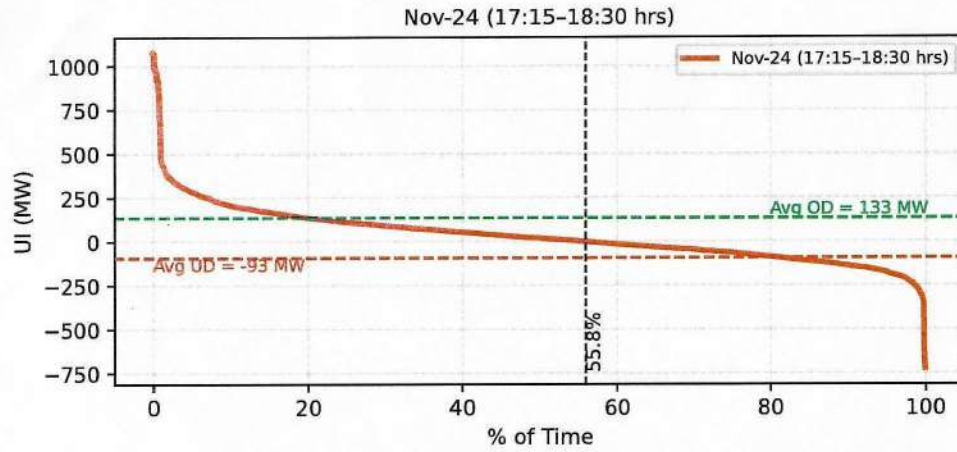
BIHAR_UI - Duration Curve during All India Evening Ramp (Median OD - 46%)

Annexure-I



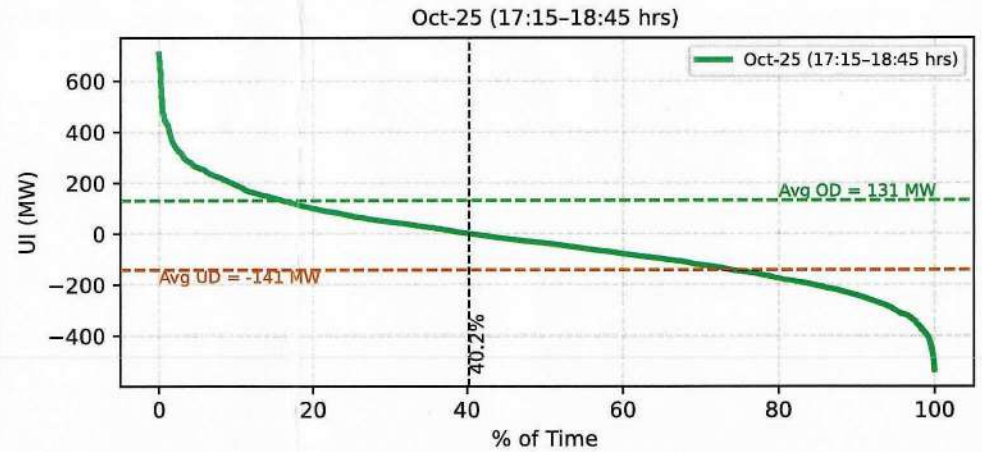
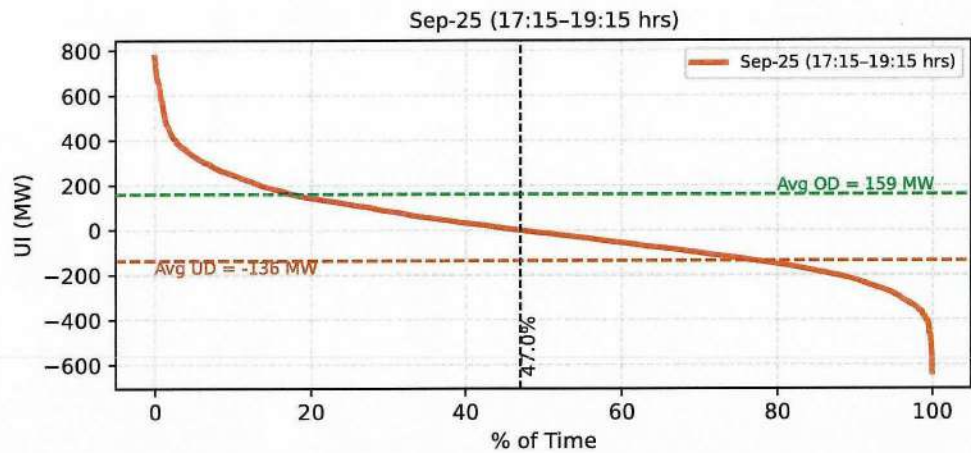
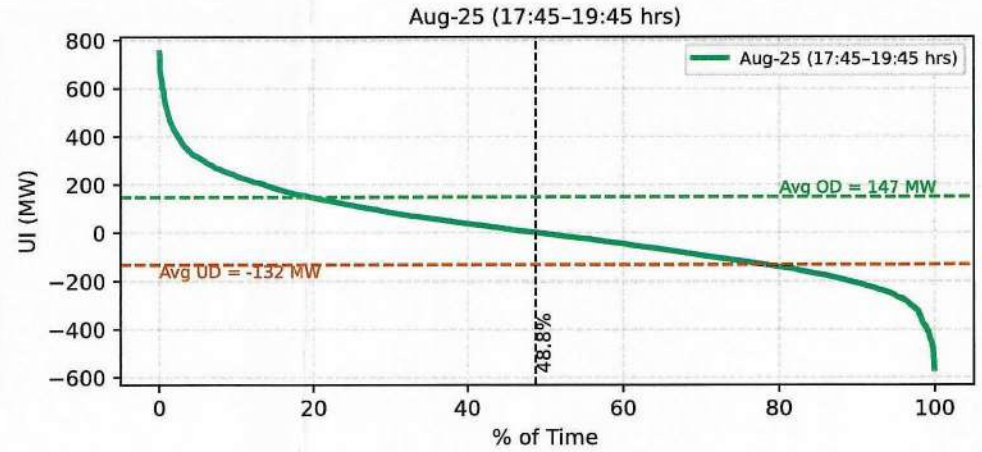
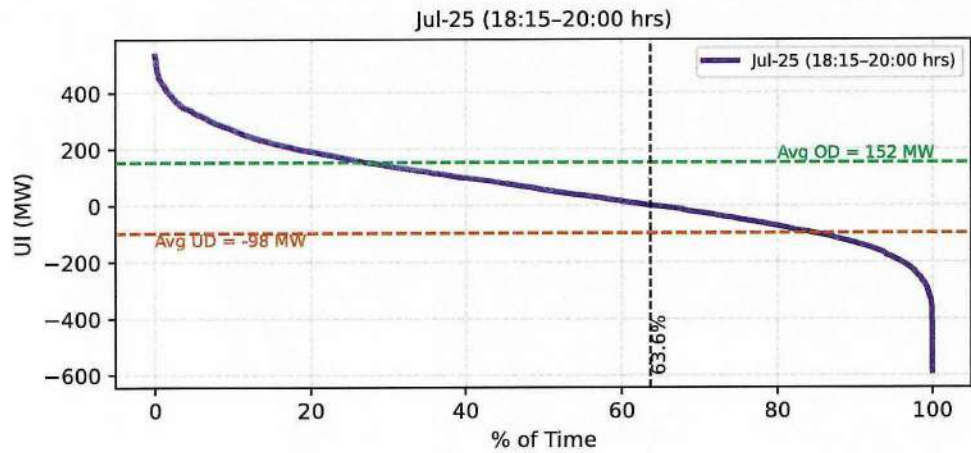
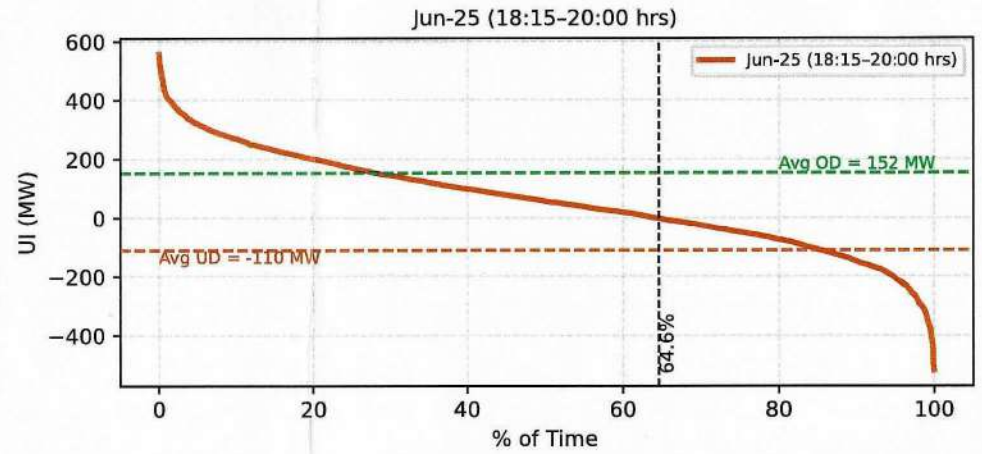
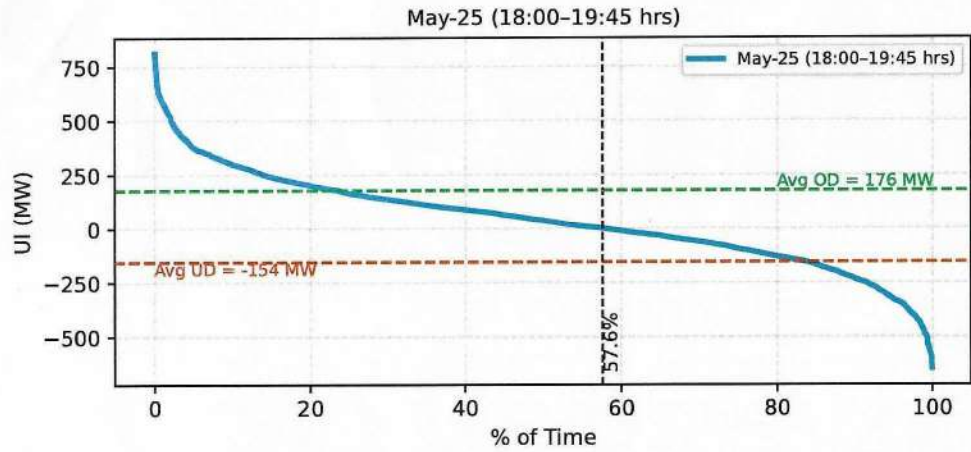
ODISHA_UI - Duration Curve during All India Evening Ramp (Median OD - 54%)

Annexure-I



ODISHA_UI - Duration Curve during All India Evening Ramp (Median OD - 54%)

Annexure-I



Minutes of the Meeting held on 18.11.2025 between ERPC, SRPC, NLDC, ERLDC, SRLDC, SLDC Odisha & POWERGRID to discuss reconductoring plan of 400kV Talcher-Meramundali D/C

ERLDC convened a meeting on 18th Nov 2025 via online mode (MS Teams) to discuss reconductoring plan of 400kV Talcher-Meramundali D/C. The meeting was chaired by Member Secretary, ERPC. MS SRPC attended the meeting as a special invitee. Representative from Odisha SLDC, NTPC, NLDC, SRLDC and PGCIL were also present in the discussion. The list of participants is attached as **Annexure-I**.

GM (System Operation), ERLDC welcomed the participants to the meeting, briefed about the scheme and expressed need for proper outage planning to reduce the outage duration.

MS ERPC stated that the reconductoring work of 400kV Talcher - Meramundali D/c line is crucial for the system security in the Eastern Region and highlighted the need to complete the reconductoring work during winter to avoid operational difficulties in summer.

MS SRPC stated that the outage of the line will have significant impact on Southern Region and it needs to be completed for long term solution of the issue. He also stressed on need to complete the reconductoring work within winter. POWERGRID were requested to deliberate their outage requirement and action plan for completing the work.

The deliberations and summary of the meeting is as follows:

1. POWERGRID intimated that the scope of work involved reconductoring of Talcher-Meramundali Ckt-1 &2 along with bay upgradation work at both NTPC Talcher and Meramundali (OPTCL) end. The work has been awarded to M/s Apar (Sub vendor of POWERGRID) with completion date of Jun'2026. POWERGRID submitted that they want to start the work simultaneously in both LILO portion of Talcher-Meramundali Ckt-2 (17.158 KM) as well as Talcher-Meramundali Ckt-1(direct line approx. 51KM) in line with the supply schedule of the HTLS conductor, insulators and other hardware materials. POWERGRID intimated that the supply of material for bay upgradation work is expected to reach site by end of Mar'26. The presentation shared by POWERGRID is attached at Annexure-II.
2. MS ERPC expressed concern over the extended planning schedule of POWERGRID to complete the work and mismatch in supply schedules with action plan. He advised to expedite supply of material and double the manpower deployed to complete the work in winter. He further emphasised the need to complete the bay upgradation work along with reconductoring work to avoid further delay.
3. MS SRPC emphasised that the line after reconductoring will not be utilized for full capacity unless the bay upgradation is completed. In response, it was clarified that the bay equipment at Angul and Meramundali SS are capable of power flow up to 2000A i.e. approx. 1300MW with HTLS conductors.
4. ERLDC made a detailed presentation highlighting line loading pattern, HVDC power flow during the previous winter months. Various scenarios were presented based on actual power flow pattern of the lines keeping in mind of probable contingencies (Presentation attached in the Annexure-III). It was pointed that if shutdown of 400KV Talcher-Meramundali circuit-1 is facilitated with availability of 400KV Talcher-Meramundali circuit-2 along with LILO portion, then there will be minimal requirement of any generation backdown until Feb'26.

With increase in demand of Odisha and outage of one circuit of Talcher-Meramundali, the ICT loading at TSTPP will also be close to its rated capacity without any redundancy as other ICT is already under long outage.

ERLDC advised to start with shutdown of 400KV Talcher-Meramundali circuit-1. During the period of shutdown, the 400KV Talcher-Meramundali circuit 2 (longer line) should be available in its original configuration with LILO.

5. NLDC submitted that the reconductoring work needs to be completed by Feb'26 as the demand in Odisha remains on the lower side in winter. In the cases of HVDC pole tripping during reconductoring work, the generation backdown quantum will be very high. NLDC requested to increase no. of gangs

the shutdown of circuit-1 without bypassing LILO part as generation backdown requirement is minimal.

6. SRLDC intimated that high demand in Southern region remains from the month of February till May. In addition, elections are also expected to be held in Tamil Nadu, Kerala and Pondicherry. In this period, shutdowns cannot be permitted with high generation backdown at TSTPP. Besides, there have been cases in winter when Talcher HVDC goes to RVO mode reducing the export capability to SR. They suggested to allow shutdown of circuit-1 with circuit-2 availability with LILO part causing reduced power flow owing to increased line length of LILO portion. The shutdown planning needs to be done without any generation backdown in view of demand peaking after 15th January.
7. MS SRPC expressed that simultaneous shutdown of both the circuits cannot be permitted (as suggested by POWERGRID). He agreed to the view of allowing reconductoring of LILO part and then circuit-1 with availability of circuit-2 with LILO part. He also stated that once any circuit is taken out for reconductoring, it should be completed in all respect in one go without requirement of further shutdown. Secondly, while availing shutdown of circuit-2, the possibility of using circuit-1 along with LILO part may be explored which will reduce the generation backdown quantum. Thirdly, line shutdowns need to be completed by January as the examinations in SR states are scheduled in Feb. Besides, the shutdowns for bay upgradation may be planned after 15th May'26.
8. SLDC Odisha submitted that line shutdowns may be completed by 15th Feb'26, else it can be availed after 15th Aug'26. Secondly, the rating of the available circuit may be considered on higher side. Shutdown of circuit-1 needs to be prioritised as the LILO work can be taken up at any time.
9. NTPC Talcher submitted that unit#1 will be under outage for overhauling work for a period of 45 days starting 15th Dec'25. MS ERPC stressed to avail the unit outage opportunity to complete the work.
10. POWERGRID intimated that the executing vendor has started supply of conductor for the LILO part based on tower schedule to minimise the damage. POWERGRID submitted that they will be able to complete reconductoring the LILO part by December end and require further 45 days to complete reconductoring the 400KV Talcher-Meramundali circuit-1.
11. In view of peak demand season of SR, MS, SRPC further emphasized to complete the works by 30th Jan'26 (SR provides concurrence to the shutdown without any backdown at Talcher stage-2 generation and 400KV Talcher-Meramundali Ckt-1 works needs to be completed by 31st Jan'26). He suggested that NLDC/ERLDC may reassess the SPS for Talcher Kolar single/ bi-pole outages considering 400KV Talcher-Meramundali circuit-1/2 planned shutdowns. ERLDC clarified that till January 2026, the existing SPS will suffice based on system studies.

He suggested the efficacy of the bays (rated and short circuit) to handle HPC conductor may be assessed without bay upgradation. ERLDC clarified that as per studies maximum flow is expected to be below the rated capacity of bus and bay equipment. He stated that PGCIL needs to put more gangs to complete the works as Talcher II generation and Talcher-Kolar links are very critical to Southern Region.

MS ERPC concluded to complete the reconductoring of LILO part by 20th Dec'25 and instructed to start the work of 400KV Talcher-Meramundali circuit-1 from 21st Dec 2025 and complete by 5th Feb'26. He also emphasized to submit progress report on weekly basis and share all revised supply schedule and execution details to ERPC/ERLDC. POWERGRID committed to complete the reconductoring work within the timeline as instructed by MS ERPC.

MS ERPC assured POWERGRID to provide all sorts of assistance for the work. However, no relaxation will be granted in completion timeline. He thanked everyone for participation in the meeting.

The meeting ended with a vote of thanks.

List of Participants

ERPC

1. Sh. N. S. Mondal, Member Secretary
2. Sh. S Kejriwal, Director/ SE(Operation)
3. Sh. D. K. Khuntia, Asst. Director (Operation)

SRPC

1. Sh. Asit Singh, Member Secretary

NLDC

1. Sh. Sunil Kumar DJ, Ch. Manager
2. Sh. Saibal Ghosh, Ch. Manager
3. Sh. Raj Kishan, Asst. Manager

SRLDC

1. Sh. Pradeep Reddy, DGM
2. Sh. Gurram Praveen, Ch. Manager

SLDC Odisha

1. Sh. Sanjay Kumar Mishra, SGM
2. Manas Ranjan Samantaray, SGM
3. Sh. Debi Prasad Kar, GM

ERLDC, GRID-INDIA

1. Sh. Debabrata Biswas, GM
2. Sh. Bilash Achari, DGM
3. Sh. Manas Das, DGM
4. Sh. Rakesh Kumar Pradhan, Ch. Manager
5. Sh. Chandan Mallick, Ch. Manager
6. Sh. Alok Pratap Singh, Ch. Manager
7. Sh. Laldhari Kumar, Manager
8. Sh. Pritam Mukherjee, Manager
9. Sh. Srimalya Ghosal, Asst. Manager

POWERGRID

1. Sh. K. K. Prusti, Sr. GM
2. Sh. Prahlad Bhola, Sr. GM
3. Sh. Debadatta Padhy, DGM

NTPC Talcher

1. Sh. Tapas Bachar, AGM
2. Sh. P Guruprasad, AGM
3. Sh. Premkumar V, AGM
4. Sh. T Ravikumar, DGM
5. Sh. Sudhanshu Sekhar, Sr. Manager

Minutes of the Meeting held on 18.11.2025 between ERPC, SRPC, NLDC, ERLDC, SRLDC, SLDC Odisha & POWERGRID to discuss reconductoring plan of 400kV FSTPP-KHSTPP D/C

ERLDC convened a meeting on 18th Nov 2025 via online mode (MS Teams) to discuss the action plan for commencing reconductoring of 400kV Farakka-Kahalgaon D/C (line length ~ 95Km). The meeting was attended by representatives of ERPC, ERLDC, FSTPP, KHSTPP, POWERGRID ER-I and ER-II. The list of participants is attached as **Annexure-I**. The deliberations and summary of the meeting is as follows:

- POWERGRID stated that the reconductoring work initially planned to start from 20th Nov'25 could not be started due to non-availability of materials at site. They intimated their revised plan to start the reconductoring work in the first week of December considering expected supply of materials in last week of November. As the bay upgradation work of Farakka Ckt#1 at NTPC Kahalgaon is in progress, it is prudent to start reconductoring in 400kV Farakka-Kahalgaon Ckt#1. The bay upgradation work will be taken up as per scheme approved in 22nd NCT meeting.
- POWERGRID presented L2 schedule of supply materials and action plan for the reconductoring works. They requested shutdown requirement of 2 months for Circuit#1 starting from first week of Dec'25 and further 2 months (February and March of 2026) for completing reconductoring of Circuit#2.
- Representative of West Bengal SLDC were not present in the meeting. They had intimated through email that their views remain same as discussed in 232nd OCC outage meeting i.e. to complete the reconductoring works by Jan'26.
- NTPC, Kahalgaon intimated that upgradation of Main Bay of Farakka Ckt#1 is going as per schedule and expected to be completed by approved schedule till 8th Jan'26.
- NTPC Farakka intimated that materials for bay upgradation are available at site and will be taken up during outage of line for reconductoring work. Upgradation of Main and tie bay of KHSTPP Ckt#1 are expected to be completed by 6th Jan'26. However, they need to rework on their plan for bay upgradation of KHSTPP Ckt#2 which is planned from 21st Mar'26 to 30th Apr'26.
- ERLDC clarified that simultaneous shutdowns of 400kV Farakka-Kahalgaon Ckt#1 and Ckt#2 cannot be permitted. ERLDC stated that it will be beneficial if all the reconductoring works be completed by January 2026 considering lesser demand of ER states.
- ERPC stated that considering the line to be crucial link for power import to West Bengal, the works needs to be completed latest by February 2026 by increasing manpower.

After deliberation, the forum was of consensus view to complete the reconductoring work by Feb'26. POWERGRID intimated that they will give best efforts to complete the work within the suggested timeline.

The meeting ended with a vote of thanks.

List of Participants

ERPC

1. Sh. D. K. Khuntia, Asst. Director (Operation)

ERLDC

1. Sh. Rakesh Kumar Pradhan, Ch. Manager
2. Sh. Laldhari Kumar, Manager
3. Sh. Pritam Mukherjee, Manager
4. Sh. Ramashankar Kumar, Asst. Manager

POWERGRID

1. Sh. Achyutanand Parhi, Sr. DGM (ER-I)
2. Sh. Rajesh Kumar, DGM (ER-I)
3. Sh. Sudeep Kumar, DGM (ER-I)
4. Sh. Prosun Kumar Mallick, DGM(ER-II)
5. Sh. Uttam Kumar, DGM (ER-I)
6. Sh. Sanjay Kumar Singh, Ch. Manager (ER-I)
7. Sh. Tarak Chandra Biswas, Ch. Manager (ER-II)
8. Sh. Ponda Tudu, Asst. Manager (ER-I)
9. Sh. Biswajit Roy, Asst. Manager (ER-II)
10. Lutfor Rehman, Engineer (ER-II)

NTPC Farakka

1. Rajesh Kumar Meena, AGM
2. Jayathran P S, DGM

NTPC Kahalgaon

1. Deborshi Chakraborty, DGM

Annexure B.2.8

Maintenance Schedule of Thermal Generating Units of ER during 2025-26

System	Station	Unit	Capacity (MW)	LGBR Approved		No. of Days	OCC Approved		Reason
				From	To		From	To	
NTPC	NABINAGAR STPP	1	660	01-Nov-25	30-Dec-25	60	01-Dec-25	30-Jan-26	AOH: Boiler+Turbine + Gen
	(Approved in 229 th OCC Meeting.)								
	BRBCL	2	250	14-Aug-25	18-Sep-25	45	06-Nov-25	21-Dec-25	AOH
	(Approved in 227 th OCC Meeting.)								
	FARAKKA STPS	4	500	01-Nov-25	05-Dec-25	36	01-Nov-25	05-Dec-25	AOH
	KAHALGAON TPS	4	210	26-Nov-25	30-Dec-25	35	01-Dec-25	04-Jan-26	Boiler +LPT+GEN
	BARH I	1	660	02-Nov-25	16-Dec-25	45			AOH
	BARH I	2	660	Not approved		45	15-Feb-26	15-Mar-26	AOH
	KVUNL	3	195				15-Nov-25	21-Dec-25	
BARAUNI TPS	9	250	01-Dec-25	30-Dec-25	30	Not availed		AOH	
JITPL	BARAUNI TPS	8	250	15-Mar-26	31-Mar-26	45	01-Dec-25	15-Jan-26	AOH
	DERANG TPP	1	600	03-Dec-25	02-Jan-26	31	03-Dec-25	02-Jan-26	AOH
GMRKEL	KAMALANGA TPS	2	350	01-Dec-25	26-Dec-25	26	AOH already done in Sept 2025		AOH- R&M
DVC	MEJIA TPS	6	250	03-Dec-25	06-Jan-26	35	17-Dec-25	20-Jan-26	AOH- R&M
	MEJIA TPS	4	250	31-Jul-25	27-Aug-25	35	02-Nov-25	06-Dec-25	AOH- R&M
	MEJIA TPS	7	250	29-Aug-25	25-Sep-25	35	01-Feb-26	07-Mar-26	AOH- R&M
	KODERMA TPS	1	500	05-Oct-25	01-Nov-25	28	10-Nov-25	07-Dec-25	AOH
WBPDC	SANTALDIH	5	250	27-Dec-25	30-Jan-26	34	03-Jan-26	06-Feb-26	BTG OH + De-Nox
	BAKRESWAR	2	210	01-Nov-25	20-Nov-25	20	01-Dec-25	25-Dec-25	BOH+GOH+RLA
	BAKRESWAR	3	210	10-Dec-25	20-Dec-25	10	Shutdown not required.		Boiler Lic Renewal
	SAGARDIGHI	3	500	03-Dec-25	22-Dec-25	20	03-Nov-25	30-Nov-25	Blr + Gen OH
	KOLAGHAT	3	210	10-Feb-26	16-Mar-26	3	24-Nov-25	25-Dec-25	ESP R&M
	KOLAGHAT	6	210	10-Aug-25	20-Aug-25	6	05-Dec-25	11-Dec-25	Boiler Lic Renewal
OPGC	IB VALLEY TPS	1	210	01-Dec-25	09-Jan-26	40	01-Dec-25	09-Jan-26	R&M
CESC	BUDGE BUDGE. TPS	1	250	15-11-2025	21-11-2025	28	02-11-2025	07-11-2025	AOH- Blr, LPT & Gen
	BUDGE BUDGE. TPS	2	250	23-11-2025	07-12-2025	10	07-01-2026	21-01-2026	AOH
	BUDGE BUDGE. TPS	3	250	09-Dec-25	15-Dec-25	7	08-11-2025	23-11-2025	Inspection
HEL	HALDIA	2	300	Not approved			25-Nov-25	16-Dec-25	AOH

ANNEXURE B.2.3

Maintenance Schedule of Thermal Generating Units of ER during 2025-26									
System	Station	Unit	Capacity	LGBR Approved		No. of Days	OCC Approved		Reason
				From	To		From	To	
<i>NTPC</i>	NABINAGAR STPP	2	660	05-Jan-26	18-Feb-26	45	Not Required		AOH
	FARAKKA STPS	6	500	15-Jan-26	18-Feb-26	35	01-Jan-26	14-Feb-26	AOH
	BARAUNI TPS	9	250	01-Dec-25	30-Dec-25	30	01-Jan-26	15-Feb-26	AOH
	BARAUNI TPS	8	250	15-Mar-26	31-Mar-26	16	Not Required		AOH
<i>DVC</i>	MEJIA TPS	6	250				28-Dec-25	31-Jan-26	AOH- R&M
	MEJIA TPS	7	500				06-Feb-26	12-Mar-26	AOH- R&M
	MEJIA TPS	8	500	11-Jan-26	04-Feb-26	25	Not Required		AOH- R&M
	KODERMA TPS	1	500				10-Dec-25	13-Jan-26	AOH
	KODERMA TPS	2	500	11-Feb-26	17-Mar-26	28	Not Required		AOH
<i>WBPDC</i>	SANTALDIH	5	210	27-Dec-25	30-Jan-26	34	03-Jan-26	06-Feb-26	BTG OH + De-Nox
	BANDEL	5	210	03-Feb-26	09-Mar-26	35	03-Feb-26	09-Mar-26	AOH
	SAGARDIGHI	1	210	05-Aug-25	08-Sep-25	20	26-Dec-25	29-Jan-26	AOH
	KOLAGHAT	3	210	10-Feb-26	16-Mar-26	35	08-Dec-25	11-Jan-26	AOH
	KOLAGHAT	4	210				05-Jan-26	11-Jan-26	ESP R&M

Annexure D.1

Anticipated Peak Demand (in MW) of ER & its constituents for January 2026			
1	BIHAR	Demand (MW)	Energy Requirement (MU)
	NET MAX DEMAND	6568	4301
	NET POWER AVAILABILITY- Own Sources	488	400
	Central Sector+Bi-Lateral	5750	3919
	SURPLUS(+)/DEFICIT(-)	-330	17
2	JHARKHAND		
	NET MAXIMUM DEMAND	2140	1120
	NET POWER AVAILABILITY- Own Source	380	233
	Central Sector+Bi-Lateral+IPP	1169	828
	SURPLUS(+)/DEFICIT(-)	-111	-59
3	DVC		
	NET MAXIMUM DEMAND	3350	2377
	NET POWER AVAILABILITY- Own Source	5584	3523
	Central Sector+MPL	307	161
	Bi- lateral export by DVC	2350	1748
	SURPLUS(+)/DEFICIT(-) AFTER EXPORT	191	-441
4	ODISHA		
	NET MAXIMUM DEMAND (OWN)	5800	3945
	NET MAXIMUM DEMAND (In Case of CPP Drawal of 900 MW(peak) and average drawl of 700 MW)	6111	3647
	NET POWER AVAILABILITY- Own Source	2682	2311
	Central Sector	2171	1190
	SURPLUS(+)/DEFICIT(-) (OWN)	-947	-444
	SURPLUS(+)/DEFICIT(-) (In Case of CPP Drawal of 900 MW(peak) and average drawl of 700 MW)	-1258	-146
5	WEST BENGAL		
	WBSEDCL	6836	
5.1	NET MAXIMUM DEMAND	6841	4209
	NET MAXIMUM DEMAND (Incl. Sikkim)	5197	3655
	NET POWER AVAILABILITY- Own Source (Incl. DPL)	2473	3194
	Central Sector+Bi-lateral+IPP&CPP+TLDP	5	1221
	EXPORT (To SIKKIM)	830	4
	SURPLUS(+)/DEFICIT(-) AFTER EXPORT		761
5.2	CESC		
	NET MAXIMUM DEMAND	1430	715
	NET POWER AVAILABILITY- Own Source	700	413
	IMPORT FROM HEL	268	213
	TOTAL AVAILABILITY OF CESC	968	626
	SURPLUS(+)/DEFICIT(-)	-462	-89
	WEST BENGAL (WBSEDCL+CESC+IPCL)		
	(excluding DVC's supply to WBSEDCL's command area)		
	NET MAXIMUM DEMAND	8266	4924
	NET POWER AVAILABILITY- Own Source	5897	3607
	CS SHARE+BILATERAL+IPP/CPP+TLDP+HEL	2741	1434
	SURPLUS(+)/DEFICIT(-) BEFORE WBSEDCL'S EXPORT	373	117
	SURPLUS(+)/DEFICIT(-) AFTER WBSEDCL'S EXPORT	368	113
6	SIKKIM		
	NET MAXIMUM DEMAND	143	69
	NET POWER AVAILABILITY- Own Source	87	61
	Central Sector	86	62
	SURPLUS(+)/DEFICIT(-)	30	54
	EASTERN REGION		
	NET MAXIMUM DEMAND	26267	16736
	NET MAXIMUM DEMAND (In Case of CPP Drawal of 900 MW(peak) and average drawl of 700 MW)	26057	16438
	BILATERAL EXPORT BY DVC (Incl. Bangladesh)	2350	1748
	EXPORT BY WBSEDCL TO SIKKIM	5	4
	EXPORT TO B'DESH & NEPAL OTHER THAN DVC	642	478
	NET TOTAL POWER AVAILABILITY OF ER	24993	15980
	(INCLUDING CS ALLOCATION +BILATERAL+IPP/CPP+HEL)		
	SURPLUS(+)/DEFICIT(-)	-1280	-760
	SURPLUS(+)/DEFICIT(-) (In Case of CPP Drawal for Odisha)	-1069	-463