

**AGENDA**

**FOR**

**52<sup>nd</sup> CCM MEETING**

**Date: 28.01.2025, Time: 11:00 Hrs.**

**(Through MS Teams online Platform)**

**Eastern Regional Power Committee**

**14, Golf Club Road, Tollygunge**

**Kolkata: 700033**

## EASTERN REGIONAL POWER COMMITTEE

### **AGENDA FOR 52<sup>nd</sup> CCM MEETING TO BE HELD ON 28.01.2025 AT 11:00 HRS THROUGH MS TEAMS**

#### **ITEM NO. A1: Confirmation of the minutes of the 51<sup>st</sup> Commercial Sub-Committee meeting held on 13.08.2024 through online platform.**

The minutes of the 51<sup>st</sup> Commercial Sub-Committee meeting was issued vide no. ERPC/Commercial/CCM/ 2024/908, dated 29.08.2024 and uploaded on ERPC website.

No observation on the same received so far.

**Members may confirm the minutes of the 51<sup>st</sup> Commercial Sub-Committee Meeting.**

### PART B: ITEMS FOR DISCUSSION

#### **ITEM NO. B1: Laying of OPGW on Transmission lines in Eastern Region: CTU**

Revised OPGW list for laying of OPGW on these links is tabulated below:

S.N.	Description	Link Length (km)	Design Attenuation (dB)	Actual Attenuation (dB)	Year of Commissioning	FOTE Requirement
1	400kV Prayagraj (Allahabad)–Sasaram	214.42	53.61	71.82 ↑ (+18.21)	2004	Covered in Congestion Scheme
2	400kV Farakka – Sagardighi II -Jeerat	(84.71+ 219.45)304	59.21	73.43 ↑ (+14.62)	2004	1 no STM-64 for Sagardighi. (Farakka, Jeerat covered in Congestion Scheme)
3	400kV Indravati-Rengali-Talcher	377.31	94.33	122.22↑ (+27.89)	2005	2 nos. STM-16 One each at Indravati, Rengali. (Talcher covered in AGC scheme.)
4	400kV Malda - Purnea & 400kV Purnea - Binaguri	367.34 (176.89+19 0.47)	52.73	75.10↑ (+22.37)	2004	1 no. STM-64 for Malda. (Binagudi, Purnea covered in Congestion Scheme)
5	400kV Binagauri-Bongaigaon	239.81	25.94	78.94↑ (+53)	2004	No requirement at Bongaigaon as per

						POWERGRID input.
		Total=	Approx. 1503 km			2 nos.- STM 16 2 nos. STM 64

Accordingly, it is proposed that 48F OPGW may be laid on above lines along with required FOTEs (2 no STM-64, 2 No STM-16) as mentioned above. The cost of laying OPGW on above links approx. 1503 km is approx. Rs 84.74 Crores. It is proposed to lay OPGW as a new scheme i.e. Eastern Region OPGW Strengthening Scheme (ERSS).

In 16<sup>th</sup> TeST meeting, the proposal was referred to CCM for commercial vetting.

**CTU and Powergrid may explain. Members may discuss.**

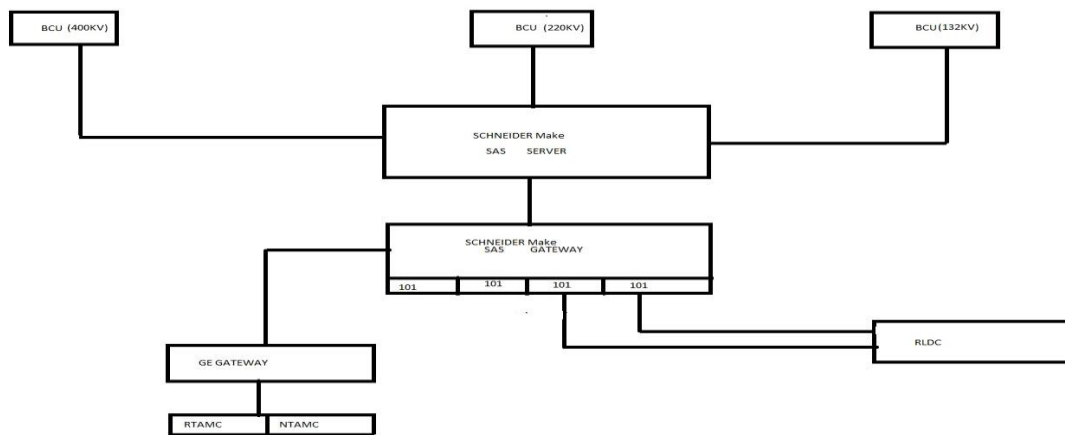
**ITEM NO. B2: Renewal of AMR AMC Services for 77 SEM Quantity**

- LOAs of AMR system were awarded in phased manner, considering the available number of Meters present at the time of LOA placement which needed to be integrated with existing AMR system. AMR Phase-3 LOA was awarded in Oct-2016 and subsequently a small quantity variation order was placed in Jul-2019 for integration of additional 77 SEM with 5 years AMC. The corresponding AMC for these 77 Meters are valid till 31-Dec-2024. AMC renewal for these Meters is required to carry out the regular AMC job.
- Considering the AMC Renewal of these 77 Meters from 01-Jan-25 till 31-Mar-26 (To make uniform AMC completion period of all phases), total cost implication comes to Rs. **14,28,562 INR** (excluding Taxes). Rates are taken from already in force AMC LOA of Phase-1/2 combine (For 656 SEM).
- Considering very small cost implications for AMC component, it is proposed for finalization of the AMC contract for proposed 77 SEMs with Quantity Variation of existing LOA, such that AMC of above-mentioned SEM's should continue without any gap.
- In view of the uninterrupted support to AMR network, 219<sup>th</sup> OCC consented to the proposal of renewal of AMC for 77 SEMs till March 2026 and referred it to CCM.

**Powergrid ER-II may update. Members may discuss.**

**ITEM NO. B3: Upgradation of Substation Automation System at Rangpo 400/220/132KV Substation: Powergrid ER-II**

- 400/220/132KV Rangpo is a pooling station located at Sikkim is the most critical substation in Sikkim. Substation Automation System (Schneider Make) was commissioned at Rangpo S/s in 2014.
- Realtime data communication from POWERGRID Rangpo sub-station to ERLDC is done through 101 protocol as there is no provision of 104 protocol in the existing SAS.



As per deliberation in **222<sup>nd</sup> OCC**

Powergrid ER-II apprised:

- ✓ Existing Rangpo SS was one of the first SAS based S/S among India and having comparatively older configuration of SAS architecture. Under present scope, data communication to RLDC/Remote gateways are still done through IEC 101 only and creating lot of disturbances and reliability issues.
- ✓ To address the issue, it is proposed to upgrade the existing SAS architecture with standard architecture with IEC 104 protocol. Further, he stressed upon that, already under SAS-Y package has rate/Scope of similar items executed in other SS and can be exercised. Further as per CERC tariff regulation (2024-29) vide definition of Useful Life, IT equipment/SCADA considered as 07 Years, whereas SCADA system at Rangpo is already 10 years old and commercially eligible for replacement.
- ✓ Although, as upgradation of Rangpo SAS is likely to be carried out in 2025, capitalization and commercial aspects (Tariff petitions) will not be linked with existing SAS-Y package.
- ✓ It is proposed to include necessary commercial implications for all purpose including Tariff Petition with ERBS-II package for the exact part of Rangpo SAS upgradation.

#### **222<sup>nd</sup> OCC Decision**

- OCC accorded in-principle approval to the proposal of Powergrid ER-II.
- OCC also referred the proposal to next CCM for commercial vetting.

**Powergrid ER-II may update. Members may discuss.**

#### **ITEM NO. B4: Proposal for keeping SAS at Durgapur S/S under Package-Y as spare at SAS Lab of Rajarhat: [Powergrid ER-II](#)**

- Upgradation/Replacement of SCADA/RTUs/SAS in POWERGRID Stations in Eastern Region has been carried out in package-Y by M/s. Siemens under the Project - Upgradation of

SCADA/RTU/SAS in Central Sector Stations and strengthening of OPGW in Eastern Region. Under this project, SAS upgradation was envisaged at Durgapur S/S.

➤ However, during detail engineering stage it is observed that merely upgrading, the communication equipment will not serve the purpose as life of other associated items for data reporting (MFTs/transducers/BCU etc) which are installed in the existing system have also come to an end and also there are many operational challenges as this is an old conventional substation. Therefore, only upgradation of SAS part will not accomplish the desired aim.

➤ In view of the same, Upgradation of entire Durgapur Substation into a SAS based station (Distributed control) is being undertaken under ADDCAP 2024-2029 tariff block and it is expected that the work will be completed by March-2026.

▪ Further in Rajarhat Sub-station, POWERGRID, has already developed inhouse SAS Lab, which are used for training/learning/bench testing of various SAS items.

▪ It is proposed to keep the SAS supplied at Durgapur Substation at SAS Lab, Rajarhat Substation, as ready spare for all Siemens make SAS system of ER-II.

▪ Regular health monitoring can be done as well same can be used for training & development work.

▪ Only Supply and F&I cost of the SAS item will be booked in ongoing SAS-Yproject and the erection cost will be deleted from this project.

In 222<sup>nd</sup> OCC Meeting,

- OCC accorded in-principle approval to the proposal of Powergrid ER-II
- OCC referred the proposal to next CCM for commercial vetting.

**Powergrid ER-II may update. Members may discuss.**

**ITEM NO. B5: Conducting VAPT assessment for AMR Asset in ERLDC (in Compliance of Cyber security guidelines): [Powergrid ER-II](#)**

▪ AMR system Data Centre hardware & software was refreshed in Jun-23. New Servers, Networking Devices and the new AMR application are currently being used in AMR system.

▪ ERLDC using the system for getting the SEM data on weekly basis. Current System is completely isolated from ERLDC IT Network, and the entire data communication is happening over LAN network.

▪ No public IP based data communication is present, and the AMR application is only accessible at ERLDC LAN Network.

➤ However, considering the upcoming requirements and the recent testing/POC of new type of Meters, new set of data requirements etc. it is recommended to conduct a complete VA/PT assessment of the system.

➤ This assessment will help to locate the necessary process improvement (If any) areas in order to make the system more robust and eliminate the security vulnerabilities (if any). The VA/PT assessment will be conducted once in every six months, as per the guidelines.

**Count of the AMR Hardware as below:**

Server	07	AMR Application	01
Managed Switches	02		
Firewall	01		
Router	01		

VA/PT will be conducted on both the Hardware and the Application. Cost estimation has been received from a CERT-IN certified vendor to conduct one round of VAPT. The existing AMR system Contract is valid till Mar-2026, hence VAPT will be needed for upcoming 04 cycles starting from Dec-24 month. Cost involvement will be as below:

Description	Unit Price (without GST)	No. of Cycle	Total Price (without GST)
VAPT of Hardware	40,000	04	1,60,000
Security testing of AMR Application	25,000	04	1,00,000
Total Cost of ownership (without GST)			<b>2,60,000</b>

PGCIL will initiate the necessary tendering (Limited tendering among CERT In certified vendors)

As per deliberation in **222<sup>nd</sup> OCC**

- OCC agreed to the proposal (along with cost implications) of carrying out VAPT assessment of AMR assets in ERLDC by CERT-In enlisted vendors. This is to be done after completion of third-party cybersecurity audit.
- OCC referred to CCM for commercial vetting.

**Powergrid ER-II may explain. Members may discuss.**

#### **ITEM NO. B6: Discrepancies in Start-up bill for the month of October 24: PVUNL**

##### **Background:**

- Agreement was to provide start up power through Patratu-Patratu line that is ATS line of PVUNL, however, due to delay in ATS by JUSNL, the TVNL-PVUNL line was made with modification of Towers for 400kV line, and this was erected at additional cost of INR 13.72 Cr(approx.) which was borne by PVUNL.
- This line was dedicated line for PVUNL to provide Start up Power with an agreement of minimum contract demand of 20.05 MVA by JBVNL even though the actual requirement of power for commissioning was approx. 2-3 MVA.
- Every month PVUNL was paying approximately 60 lakhs towards contract demand of 20 MVA even though actual consumption was 2-3 MVA.
- JBVNL employs a billing methodology based on kVA and kVAh, instead of the traditional kW and kWh approach. Despite separate agreement for drawl of Start up power in other projects, JBVNL

here insisted for agreement for HT Consumer basis which is yet to signed and pending at JBVNL end.

- Grid Code categorize reactive power support provided for grid stability and quality as an “Ancillary Service”. Also, entities that draw reactive power when system voltage exceeds 103% are eligible for incentives. The current billing approach by JBVNL contradicts these established regulations and results in an exorbitant charge to maintain grid stability.
- To ensure grid stability and prevent voltage fluctuations, 125MVAR Bus Reactor at PVUNL end was taken into service in consultation with ERLDC/ SLDC. The reactor was in service for over 11 days (from 17.10.2024 to 29.10.2024) during the month.

222<sup>nd</sup> OCC referred the discrepancy in start-up power bill to CCM for deliberation.

**PVUNL may explain. Members may discuss.**

## **ITEM NO. B7: Agenda by NTPC.**

### **A. Consideration of Partial Outages of Generating Stations in calculation of DSM Accounts.**

Vide CERC Notification No. L-1/260/2021/CERC, Dated: 5th August, 2024, Clause 8 - Charges for Deviation, Sub-Clause (12) states as follows:

#### **Quote**

*(12) Notwithstanding anything contained in Clauses (1) to (11) of this Regulation, in case of forced outage or partial outage of a seller, the charges for deviation shall be @ the reference charge rate for a maximum duration of eight time blocks or until the revision of its schedule, whichever is earlier.*

#### **Unquote**

The said notification has been effective from 16.09.2024. However, in case of partial outage, "Deviation rate @ reference charge" has not yet been incorporated in the DSM calculation, as evident from the DSM statements published by ERPC. The same may please be incorporated.

In this issue, as a reference NPGCL has submitted few cases of partial outage of their unit and intimated that other generators of NTPC are submitting the partial outage data to ERLDC on regular basis and further requested to incorporate the same in the DSM.

**NTPC may update. Members may discuss.**

### **B. Schedule Generation Below Technical Minimum- Non-Compliance w.r.t. IEGC-2023-reg.**

Recently, on some occasions, few beneficiaries reduce their requisitions after 1430 hrs. of D-I which brings

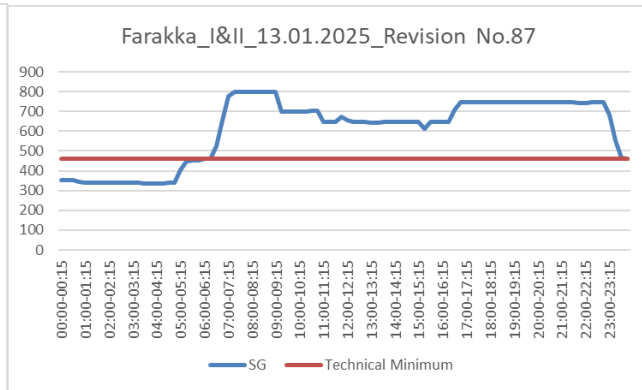
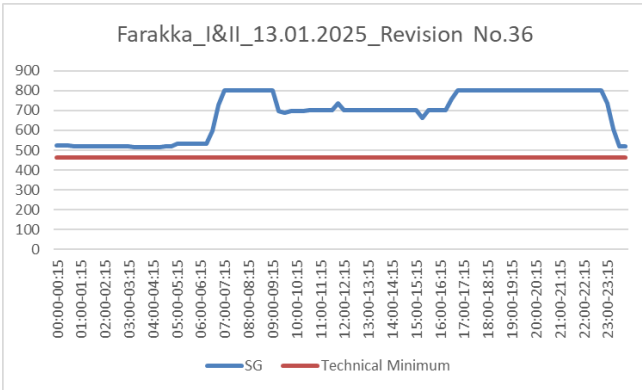
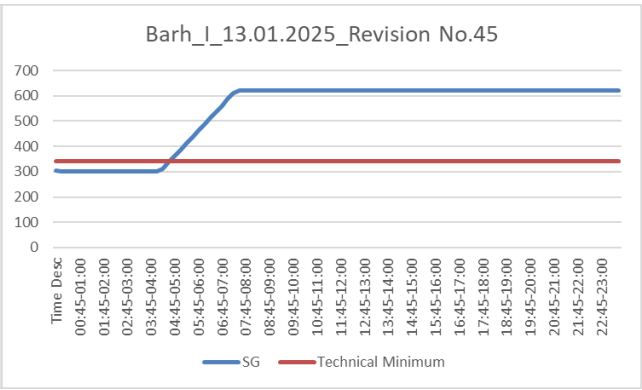
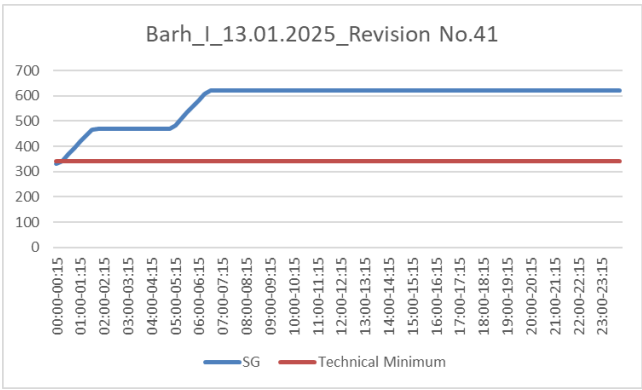
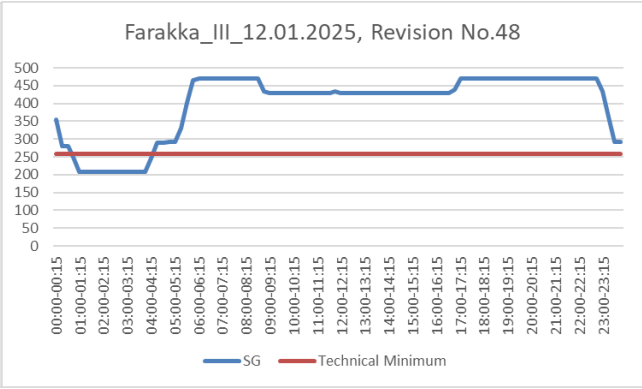
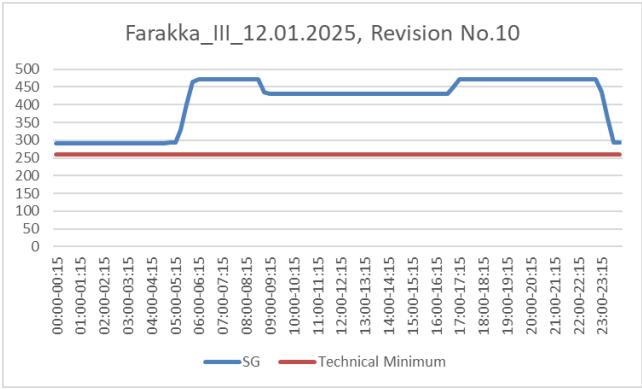
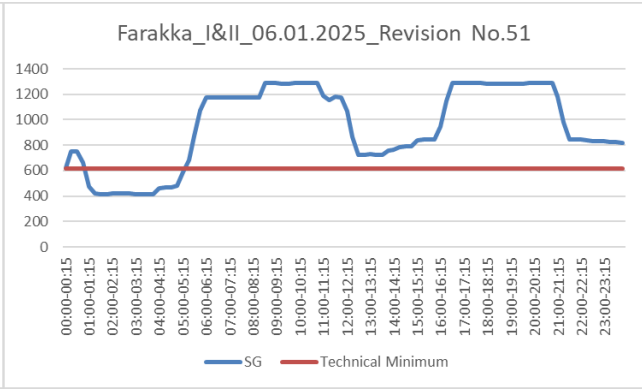
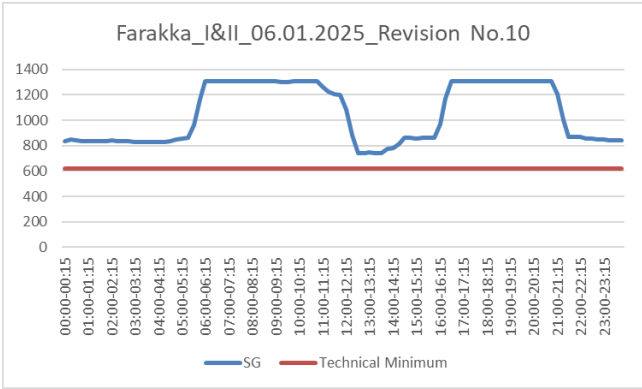
down the total SG of the generating station below its technical minimum. Details of such occasions are mentioned below:

<b>Date</b>	<b>Station</b>	<b>Tech. Min. (MW)</b>	<b>SG before 14:30 hrs of D-1 (MW)</b>	<b>SG&lt;TM before despatch on D (MW)</b>	<b>Quantum backed down by Beneficiaries (MW)</b>
06.01.2025	Farakka_I&II	617	835 Block No. (05-21)	Min- 405 Max- 540 Block No. (05-21)	Assam -17 Bihar-189 Delhi- 9 Gujrat-110 Jharkhand- 51 Odisha- 11 Tamil Naidu- 8 UP- 14
13.01.2025	Farakka_I&II	463	520 Block No. (1-24)	Min- 339 Max- 454 Block No. (1-24)	Assam- 9 Bihar- 92 Gujrat-54 Odisha- 4 TN- 4/UP- 7
12.01.2025	Farakka_III	259	290 Block No. (05-17)	Min 209 Max- 245 Block No. (05-17)	Bihar- 41 WB- 38
13.01.2025	Barh_I	342	469 Block No. (1-20)	Min- 299 Max- 336 Block No. (1-20)	Bihar- 169

Referring to the examples mentioned above, it appears that the current scheduling software is not configured to comply with regulatory provisions i.e. restricting the scheduling of a generating station below its technical minimum after 14:30 hrs on D-1. As SCUC support was also not provided if the downward revision of schedule by beneficiaries after 1500 Hr. i.e. after issuance of the SCUC entitlement list. Resulting, the station forces to incurred significant losses to maintain its technical minimum and make it available to cater peak demand of the beneficiaries.

It is requested that such provisions to be incorporated in the scheduling software and direct the DISCOMs to refrain from downward scheduling after 1430 hrs on D-1 to comply with the regulations. This is required to ensure the operational efficiencies of the stations, grid-stability, and avoiding commercial loss to the generator.





**Applicable Clauses/Regulations:**

- 1. Central Electricity Regulatory Commission (Indian Electricity Grid Code) Regulations, 2023, clause No. 4(b) Section 46
- 2. Central Electricity Regulatory Commission (Indian Electricity Grid Code) (First Amendment) Regulations, 2024: Clause No. 6(5)10

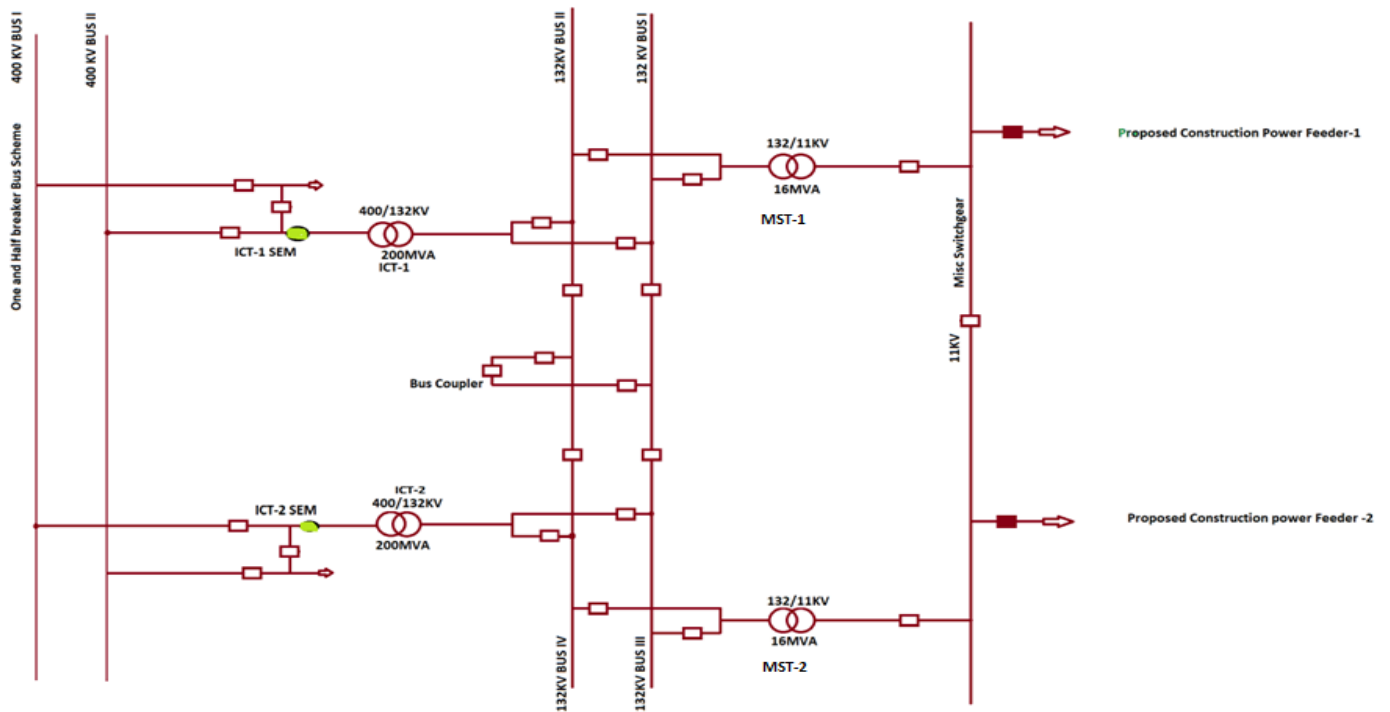
**NTPC and ERLDC may update. Members may discuss.**

**C. Provision of construction power supply for FGD from existing commercialized units of Nabinagar Stage-I.**

In the 52<sup>nd</sup> TCC& ERPC Meeting NTPC & SBPDCL were advised to settle the issues bilaterally and shall submit the final metering arrangement at Nabinagar to ERPC/ERLDC.

SBPDCL and NTPC both are now agreed for the modalities. The metering scheme and modalities may please be approved.

**SLD For Proposed Construction Power Scheme for NTPC Nabinagar Stage II**



**NTPC ER-I may explain. Members may discuss.**

#### **D. Sale of URS power in RTM / DAM in case beneficiary wants the power in exigency T-GNA in D-**

As per clause 29.4 of Central Electricity Regulatory Commission (Connectivity and General Network Access to the inter-State Transmission System) Regulations, 2022: Applications received till 1300 hrs. of (S-1) day shall be processed after 1300 hrs. on (S-1) day on first come-first-served basis and shall be finalized by 1400 hrs. of (S-1) day.

Sometimes it is experienced that the exigency-TGNA is granted to beneficiary even the URS quantum is already cleared in the DAM, lead to and the Scheduled Generation exceeds the Declared Capacity with respect to the Generating Station.

To avoid this situation, ERLDC should put a limit to the quantum under T-GNA to keep the total Scheduled Generation under the DC.

**NTPC may explain. Members may discuss.**

#### **E. Accounts Revision.**

- **Barh: DSM revision for Barh Stage-2 Dated 02.04.2024.**

DSM calculation for 1<sup>st</sup> April;2024 has been deliberated in TCC meeting.

The DSM calculation may be normalized @ECR for 2<sup>nd</sup> April'2024 for 16 blocks in same way as same condition persisted on 1<sup>st</sup> April'2024.

**NTPC may update. Members may discuss.**

#### **ITEM NO. B8: Request for Intervention in Recovery of Outstanding Dues from Government of Sikkim - WBSEDCL.**

The Energy and Power Department of the Government of Sikkim has an agreement with WBSEDCL for the purchase of power at a tariff based on the generation cost of the Rammam Hydel project operated by WBSEDCL. In line with this arrangement, the Government of Sikkim has been drawing power from WBSEDCL on a regular basis but has been reluctant to settle the bills since 2017. Additionally, WBSEDCL previously purchased power from the Government of Sikkim on a consumer basis until June 2023. The volume of power purchased by WBSEDCL was significantly less compared to the amount of power sold to the Government of Sikkim. After accounting for adjustments related to purchases and sales, as well as surprise payments made by Sikkim for November and December 2021, the current outstanding dues as on 31.12.2024 from the Government of Sikkim amount to approximately Rs. 99.80 Crores. This figure includes a Late Payment Surcharge (LPSC) of Rs. 43.84 Crores. The issue was raised in 42<sup>nd</sup> Commercial Sub-Committee Meeting as well as in 43<sup>rd</sup> & 52<sup>nd</sup> TCC & ERPC Meeting. However, there has been no positive response or payment from the Government of Sikkim thus far.

Till date WBSEDCL has made several attempts to resolve this issue but has found no satisfactory remedy. In view of the prolonged nature of this issue and the substantial outstanding amount, WBSEDCL is again seeking intervention from the ERPC platform with a request to take necessary actions to address the issue with the appropriate higher platform like CEA & MOP.

**WBSEDCL may update and explain. Members may discuss.**

**ITEM NO. B9: Recovery of Outstanding Dues--Agenda by Jindal India Power Limited.**

Jindal India Power Limited (JIPL) has 2x600 MW Thermal Power Plant located in the village of Derang, District Angul, State Odisha. JIPL is having a medium term PPA with Jammu & Kashmir Power Corporation Limited (JKPCL) dated 04.12.2023 for the supply of 60.61 MW supply of power under Shakti B (v) scheme for 5 years.

In lieu with the aforesaid PPA, JIPL have started supplying power to JKPCL from 17<sup>th</sup> October 2024 and have raised 3 Energy bills to JKPCL as on date which translate to total bill outstanding of approx. Rs. 52.39 crore (till Dec 2024). The said bill is still unsettled and still pending from JKPCL end.

JKPCL has provided us Payment Security Mechanism in form of Advance payment of Rs. 21.25 crore and the total amount payable to JIPL has become more than twice the advance payment made by JKPCL. It is worth noting that JKPCL till date has failed to pay amount against the JIPL Monthly Energy Invoices.

**JIPL may explain. Members may discuss.**

**ITEM NO. B10: Agenda by ERLDC.**

**A. Default Details of Constituents pertaining to Deviation, Reactive, Legacy Dues.**

The details of major defaulters as on 16.01.2025 considering the ERPC bills dated 15/01/25 (Wk- 30/12/24 to 05/01/25) for DSM charges, Reactive charges and Legacy dues are tabulated below. Pending Reconciliation Statements pertaining to DSM, Reactive, Fees and Charges are also mentioned below -

**Jharkhand:**

	<b>JBVNL</b>
<b>DSM (in Cr)</b>	₹ 76.97 Cr /-
<b>Reactive</b>	₹ 1.61 Lakhs
<b>LC for DSM</b>	No Valid LC available
<b>Legacy dues (as on 16.01.25)</b>	0

<b>Reconciliation of Statements of</b>	<b>DSM:</b> Pending from Q2 of FY 2020-21
	<b>Reactive:</b> Pending from Q1 of FY 2019-20
	<b>FnC:</b> Pending from Q1 of FY 2021-22

**Bihar:**

	<b>Bihar</b>
<b>DSM (in Cr)</b>	₹ 109.02 Cr /-
<b>Reactive</b>	₹ 10.46 Lakhs
<b>LC for DSM</b>	No Valid LC available
<b>Legacy dues (as on 16.01.25)</b>	₹ 65.99 Cr
<b>Reconciliation of Statements of</b>	<b>DSM:</b> Pending from Q1 of FY 2023-24
	<b>Reactive:</b> Pending from Q1 of FY 2023-24
	<b>FnC:</b> Pending from Q1 of FY 2023-24

**Sikkim:**

	<b>Sikkim</b>
<b>DSM (in Cr)</b>	₹ 28.67 Cr /-
<b>Reactive</b>	Nil
<b>Due date of expiry of LC</b>	NA
<b>Legacy dues (as on 16.01.25)</b>	₹ 1.15 Cr
<b>Reconciliation of Statements of</b>	<b>DSM:</b> Pending from Q2 of FY 2019-20
	<b>Reactive:</b> Pending from Q1 of FY 2019-20
	<b>FnC:</b> Pending from Q1 of FY 2021-22

Information about the change in outstanding amounts pertaining to DSM, following the 51<sup>st</sup> CCM, which was held on 13.08.24, is tabulated below:

*Amount in ₹ Cr*

Entity	Outstanding as on 31.07.24 (as per 51 <sup>st</sup> CCM)	Amount Receivable by Pool after 31.07.24 till 16.01.25	Amount Received by pool after 31.07.24 till 16.01.25	Present outstanding as on 16.01.25
Jharkhand	110.76	25.66	59.45	76.97
Bihar	123.94	45.08	60	109.02
Sikkim	28.84	-0.17	0	28.67

Further, the details of other pool members are enclosed as **Annexure-I** and **Annexure-II**.

**Bihar, JBVNL & SIKKIM may confirm the schedule for payment of outstanding dues.**

#### **B. Opening of LC by ER constituents for DSM payments**

The details of LC amount required to be opened, as per ERLDC letter dated 29/04/2024 (and reminder dated 26/06/2024), for default in FY 2023-24 by ER constituents is given in table below:

SI No	ER Constituents	LC Amount (110% of Average weekly Deviation Charge liability) in ₹	Due date of expiry	Remarks
1	BSPTCL	₹ 3,70,50,927	NA	No Valid LC
2	JUVNL	₹ 2,65,67,573	NA	No Valid LC
3	DVC	₹ 2,03,05,615	NA	No Valid LC
4	Sikkim	₹ 55,16,800	NA	No Valid LC
5	NTPC	₹ 8,14,71,412	NA	No Valid LC
6	CHUZACHEN	₹ 3,91,733	NA	No Valid LC
7	GMR	₹ 5,27,184	NA	No Valid LC
8	NVVN-Nepal	₹ 1,96,45,399	NA	No Valid LC
9	BRBCL	₹ 17,88,965	NA	No Valid LC
10	ECR	₹ 7,40,236	NA	No Valid LC

11	IBEUL	₹ 27,67,148	NA	No Valid LC
12	Tashiding	₹ 42,887	NA	No Valid LC

Further, the details of other pool members are enclosed as **Annexure-III**.

**C. Status of PSDF:**

No amount from the Deviation and Reactive Pool account was transferred to PSDF after 5th December 2023. The total amount of around ₹ 2187.32 Cr has been transferred to PSDF so far. The breakup details of fund transferred to PSDF (till 16.01.25) is enclosed in Annexure IV.

**Members may note.**

**D. Reconciliation of Pool accounts:**

The reconciliation statements of DSM, Reactive, TRAS, SRAS and SCUC charges are being issued by ERLDC on quarterly basis and statements are being sent to the respective constituents and also being uploaded at ERLDC website at <https://erldc.in/market-operation/dsmreconciliation/>. The status of reconciliation as on 16.01.2024 is enclosed in **Annexure- V and VI**.

Constituents are requested to take necessary action for the signing of pending reconciliation statements.  
**Temporary General Network Access (T- GNA)**

**1. For TGNA payments made to CTU:**

The reconciliation statements of TGNA payments of Q-2 for FY 24-25 has been sent to CTU on 25.10.2024 and also uploaded the same at ERLDC website at <https://erldc.in/market-operation/ctu/>.The constituent was requested to verify /check the same & comment (if any) to ERLDC at the earliest.

The status of reconciliation is enclosed in **Annexure- VII**.

**Constituents are requested to update the status of reconciliation.**

**2. For Payments made to TGNA Applicants:**

The reconciliation statements of TGNA payments for the period of Q-2 for FY 24-25 have been sent to the GRIDCO, APPCPL, DALMIA CEMENT (BHARAT) LIMITED (RCW) , HPX, IEXL, IPCL, NALCO(OD), PXIL, ITC Limited Corporate Office Kolkata, BSPHCL, AEL, NVVN, PTC, PCW, UCL ULTSLDCD47, UCL Cuttack, GMRETL, JSL, TSL, NEFA, UCL WB, Vedanta SEZ and TPTCL on dated 25.10.2024 and also uploaded the same at ERLDC website at <https://erldc.in/open-access/reconciliation-applicant/>.The constituents were requested to verify /check the same & comment (if any) to ERLDC at the earliest.

The status of reconciliation is enclosed in **Annexure-VII**.

**Constituents are requested to update the status of reconciliation.**

**F. Fees and Charges of ERLDC**

The reconciliation statements of FnC payments by registered users of ERLDC have been sent up to the period of Q1 of FY 2024-25. The same is also available at FnC portal <https://fc.posoco.in/FnCWeb/#/landing>. Many of the users are yet to sign the reconciliation statement. The constituents were requested to verify /check the same & comment (if any) to ERLDC at the earliest.

The status of reconciliation is enclosed in **Annexure- VIII**.

**Constituents are requested to update the status of reconciliation.**

**ITEM NO. B11: Agenda by Powergrid.**

**A. Non-Opening of requisite amount of LC:**

- (i) Following constituents are required to enhance/ extend LC towards Payment Security Mechanism, as per Annexure-8 of 8.2 of Para 8.0 of BCD Procedure and CERC Regulations:

SL. No	Name of DIC's	Required Value of LC (in Cr.)	Present Value of LC (in Cr.)
(i)	India Power Corporation Ltd.	9.93	0
(ii)	Sikkim	3.10	0
(iii)	North Bihar Power Distribution Company Limited (NBPDC)	90.98	9.73
(iv)	South Bihar Power Distribution Company Limited (SBPDCL)	106.52	15.27
(v)	Jharkhand Bidyut Vitran Nigam Ltd (JBVNL)	31.42	11.52

- Letter of Credit (LC) to be opened in favour of **CTUIL for POC & POWERGRID** towards **Non-POC** Billing.

**B. Payment of Outstanding dues more than 45 days:**

SL. No	Name of DIC's	Total Outstanding Dues (in Cr.)	Outstanding Dues more than 45 days (in Cr.)
(i)	West Bengal State Electricity Distribution Company Ltd. (WBSEDCL)	414.62	236.76
(ii)	Jharkhand Bijli Vitran Nigam Limited (JBVNL)	219.70	106.92
(iii)	India power corporation limited (IPCL)	8.52	1.71
(iv)	West Bengal State Electricity Transmission Company Ltd. (WBSETCL)	28.91	28.91



(v)	Odisha Power Generation Company Limited (OPGCL)	11.11	11.11
(vi)	Jharkhand Urja Sancharan Nigam Ltd. (JUSNL)	7.19	7.19
	<b>Total</b>	<b>690.05</b>	<b>392.60</b>

**C. Non-payment of RTDA bills:**

The following DIC's are not paying RTDA bills:

Sl. No	Name of DIC's	Outstanding dues	Remarks
(i)	West Bengal State Electricity Distribution Company Ltd. (WBSEDCL)	<b>236.76 Cr.</b>	Outstanding dues of INR 1.20 Cr. pending for long period, INR 2.91 Cr. (bill dtd. 09.12.22), INR 5.65 Cr. (bill dtd. 10.05.23), 192.48 Cr (bill dtd 13.12.23), 34.23 Cr (Bill dtd 28.05.24) & 0.2975 Cr (Bill dtd 18.11.24) against RTDA bills are pending despite of several follow up.
(ii)	Jharkhand Bidyut Vitran Nigam Ltd (JBVNL)	<b>60.67 Cr.</b>	Outstanding dues of INR 51.32 Cr. (Bill dtd 13.12.23), INR 8.12 Cr. (bill dtd 28.05.24) & INR 1.23 Cr. (bill dtd 18.11.24) against RTDA bills are pending despite several follow up.

**D. Preponement of commissioning of new 220/132KV, 1X200MVA (4th) ICT at Ara (POWERGRID) S/s:**

- I. Implementation timeframe for 'installation of new 220/132KV, 1X200MVA (4th) ICT at Ara (POWERGRID) S/s' under 'Eastern Region Expansion Scheme-XXXVI (ERES-XXXVI)' was 18 months from the issue of OM by CTUIL i.e. 20.10.2024 as per CTUIL Office Memorandum vide ref. no C/CTU/AI/00/12th CCTP dated 21.04.2023.
- II. However, said ICT was put into commercial operation w.e.f. 18.08.2024 for improving the performance, safety & security of the grid and considering load requirement at Ara. Trial Run certificate issued by GRID-INDIA.

**Members may note that this agenda will be referred to ERPC for approval.**

**E. List of Assets commissioned in the recent past in Eastern Region (ER)**

A	<b>Strengthening of OPGW Network within the ER Grid and Connectivity with other Region</b>	DOC0	Remarks	Region
1	765kV Jharsuguda-Dharmjaygarh OPGW Link (148.603 KM) along with 2nos. of SDH equipment and 4 nos. OLIC at Jharsuguda and Dharmjaygarh end	31-08-2024	DOC0 Letter Dtd. 08-10-2024	ODP
2	Durgapur - Farakka OPGW Link (OPGW Network - 157.745 km)	23.06.2024	DOC0 Letter Dtd. 01.08.2024	ER-II
3	Durgapur - Sagardighi OPGW Link (OPGW Network - 133.572 km) & Farakka-Purnea OPGW Link (OPGW Network - 179.643 km)	25.06.2024	DOC0 Letter Dtd. 01.08.2024	ER-II
B	<b>Upgradation of SCADA/RTUs/SAS in Central Sector stations and Strengthening of OPGW network in Eastern Region</b>	DOC0	Remarks	Region
4	Upgradation of SAS (Substation Automation System Hardware/License upgradation) at 09 locations (Chaibasa 400 KV, Gaya 765 KV, Kishenganj 400 KV, New Ranchi 765 kV, Chandwa 400 KV, Daltonganj 400 KV, Banka 400 kV, Lakhisarai 400 KV, Sasaram 765KV HVDC) and Implementation of BCU Based Substation Automation System (SAS) at 02 locations (Ara 220KV & Purnea 220KV)	21.12.2023	DOC0 Letter Dtd. 25.07.2024	ER-I
5	Upgradation of SAS (Substation Automation System Hardware/License upgradation) at 02 locations ( 220/132KV Birpara, 220KV New Melli SS)	31.03.2023	DOC0 Letter Dtd. 05.09.2024	ER-II
6	Upgradation of SAS (Substation Automation System Hardware/License upgradation) at 05 locations (765/400kV Angul, 400/220 kV Bolangir, 400/220 kV Keonjhar, 765/400 kV Sundargarh, 400/220 kV Pandibili)	10-02-2023	DOC0 Letter Dtd. 03.10.2024	ODP

7	Rangpo-Dikchu HPS OPGW Link (OPGW Network – 32.176 kM) and Upgradation of 01 no RTU at 400/220 kV Binaguri SS	12.09.2024	DOCO Letter Dtd. 26.11.2024	ER-II
8	Upgradation of 01 no RTU at 132/66 kV Gangtok SS	04.08.2024	DOCO Letter Dtd. 26.11.2024	ER-II
<b>C</b>	<b><i>Eastern Region Expansion Scheme (ERES) - XXXVI</i></b>	<b>DOCO</b>	<b>Remarks</b>	<b>Region</b>
9	Installation of new 220/132 kV, 1x200MVA (4th) ICT along with associated bays & 132KV Cables at Ara (POWERGRID) Substation	18.08.2024	DOCO Letter Dtd. 19.09.2024	ER-I
<b>D</b>	<b><i>Eastern Region Expansion Scheme (ERES) - XXVII</i></b>	<b>DOCO</b>	<b>Remarks</b>	<b>Region</b>
10	Installation of 420 kV, 1 X 125 MVA Bus Reactor along with associated bays at Alipurduar (POWERGRID) Substation	26-09-2024	DOCO Letter Dtd. 24-10-2024	ER-II
<b>E</b>	<b><i>Eastern Region Expansion Scheme (ERES) - XXXI</i></b>	<b>DOCO</b>	<b>Remarks</b>	<b>Region</b>
11	Installation of new 420 kV, 1 X 125 MVA Bus Reactor along with associated bays at Jamshedpur (POWERGRID) Substation	08-10-2024	DOCO Letter Dtd. 20-11-2024	ER-I

Members may note.

**ITEM NO. B12:** Any other points for discussion with the permission of chair.

\*\*\*\*\*



**Annexure - II****STATUS OF REACTIVE CHARGES**

AS on 16-01-25

Figures in ₹ Lakhs

Name of Parties	Net outstanding upto 2023-24	Receivable Amount by pool	Received Amount by pool	Payable Amount by pool	Paid Amount by pool	Outstanding Amount Receivable(+Ve) / Payable by pool(-Ve)
Bhutan	0	41.94018	41.16429	97.841	97.841	0.78
Bangladesh	0	8.84828	8.24185	0.01327	0.01327	0.61
Nepal	0	15.80907	12.89632	5.59695	5.59695	2.91
NEA-Bihar	0	0.9905	0.9905	2.15775	2.15775	0.00
BSPHCL	0	13.46412	0	234.56389	231.56012	10.46
JUVNL	0	105.11191	102.78627	0.7167	0	1.61
DVC	0	5.26943	5.26943	54.15706	54.15706	0.00
GRIDCO	0	1.36253	0.64608	197.1041	195.44544	-0.94
SIKKIM	0	0.08008	0	4.07652	3.10829	-0.89
WBSETCL	0	76.62776	0	54.52071	16.54257	38.65
JITPL	0	0.00145	0.00145	1.24673	1.24673	0.00
Alipurduar	0	0.32631	0.24451	0	0	0.08
Sasaram	0	0.23505	0.2173	0.00355	0	0.01
MPL	0	0.0002	0.0002	0	0	0.00
APNRL	0	0.77785	0	1.15491	1.15051	0.77
BRBCL	0	0	0	1.67122	1.67122	0.00
JLHEP	0	0.17362	0.0016	0.0029	0.0029	0.17
Chuzachen	0	0.04904	0.04865	0.70752	0.70752	0.00
TUL	0	0	0	0	0	0.00
Rongnichu	0	0.47041	0.38439	0.24967	0.24527	0.08
THEP	0	0.41545	0.083	0.02742	0.03302	0.34
Dikchu	0	0.0005	0.0005	0.05507	0.05507	0.00
ECR	0	5.24387	5.09467	1.3879	1.3879	0.15
GMR	0	0.364	0.364	1.22645	1.22645	0.00
IND_Bharat	0	2.27774	2.20384	6.51905	6.44515	0.00
NHPC	0	0	0	12.99952	12.99952	0.00
NTPC	0	0	0	775.62696	775.62696	0.00

Receivable:

Received:

'- ve' Payable by ER pool

Receivable by ER POOL

Received by ER POOL

'+ ve' Receivable by ER pool

Payable by ER POOL

Paid by ER POOL

**Current Status of Letter of Credit (LC) amount against DSM charges for ER constituents***Figures in Lacs of Rupees*

SI No	ER Constituents	No. of weeks in which Deviation Charge payable	No of times payment was delayed during 2023-24	Total Deviation charges payable to pool during 2023-24	Average weekly Deviation Charge liability	LC Amount	Defaulting Weeks	Due date of expiry	Remarks
					(C)/52 weeks				
		(A)	(B)	(C)	(D)	(E)	(G)	(F)	(G)
1	Bihar State Power Holding Corporation Limited / बिहार	35	35	17514.98	336.83	370.50927	ALL Weeks		
2	Jharkhand State Electricity Board / झारखंड	43	43	12559.22	241.52	265.67573	ALL Weeks		
3	Damodar Valley Corporation / डीवीसी	38	4	9599.02	184.60	203.05615	3, 35, 45 r-1, 53		
4	Power Deptt, Govt. of Sikkim / सिक्किम	37	37	2607.94	50.15	55.16800	ALL Weeks		
5	NTPC / एनटीपीसी	53	3	38513.76	740.65	814.71412	28, 29, 38		
6	Adhunik Power & Natural Resources Limited / अधुनिक शक्ति	31	31	398.10	7.66	8.42125	ALL Weeks	11-12-2024	LC opened for ₹ 25,95,437 /-
7	Gati Infrastructure Private Limited / गुजाचेन	26	11	185.18	3.56	3.91733	4, 5, 6, 7, 11, 13, 18, 20, 25, 37, 39		
8	GMR Kamalanga Energy Limited / जीएमआर	32	28	249.21	4.79	5.27184	All weeks except 5, 19, 26, 38		
9	Jindal India Thermal Power Ltd. / जिंदल	23	9	1096.44	21.09	23.19395	21, 25, 26, 29,31, 32, 36, 39, 44	31-03-2025	LC opened for ₹ 23,19,395 /-
10	DANS Energy Private Limited - Operation Retention Account / डेन्स ऊर्जा	9	9	150.46	2.89	3.18275	ALL Weeks	09-01-2025	LC opened for ₹ 25,22,302 /-
11	NTPC Vidyut Vyapar Nigam Ltd-Nepal / एनटीपीसी-नेपाल	43	4	9286.92	178.59	196.45399	3, 6, 21, 24		
12	Bhartiya Rail Bijlee Company Ltd. / बीआर बीसीएल	42	12	845.69	16.26	17.88965	1, 4, 8, 10, 14, 17, 19, 20, 26, 28, 31		
13	Powergrid Corporation Of India Limited-Sasaram / सासाराम	32	4	47.42	0.91	1.00311	1, 18, 21, 24	31-03-2025	LC opened for ₹ 1,00,311 /-
14	Sneha Kinetic Power Projects Pvt. Ltd./ दिकचू	8	2	352.14	6.77	7.44904	1, 4	03-05-2025	LC opened for ₹ 7,44,904 /-
15	PGCIL-Alipurduar / अलीपुरदुआर	30	14	45.40	0.87	0.96036	1, 10, 21, 23, 25, 29, 32, 33, 34, 35, 37, 43, 44, 52	31-03-2025	LC opened for ₹ 96,036/-
16	East Central Railway	33	7	349.92969	6.72942	7.40236	18, 25, 30, 35, 43, 51, 52		
17	Ind bharath energy utkal limited	6	6	1308.10652	25.15589	27.67148	ALL Weeks		
18	Shiga Energy Private / शिगा ऊर्जा	1	1	20.27364	0.38988	0.42887	12 r-1		

## DETAILS OF DISBURSEMENT TO POWER SYSTEM DEVELOPMENT FUND

Sl No	Nature of Amount	Amount transferred to PSDF (Rs in Lac)	Date of Disbursement	Remarks
	Opening Balance (upto 31.03.2019)	95896.17		
1	Reactive Energy Charge	105.79202	04.04.19	Reactive Charges 18-19
2	Reactive Energy Charge	287.48448	03.05.19	Reactive Charges 18-19 & 19-20
3	Reactive Energy Charge	129.69559	03.06.19	Reactive Charges 19-20
4	Reactive Energy Charge	207.83840	04.07.19	Reactive Charges 19-20
5	Reactive Energy Charge	94.91703	02.08.19	Reactive Charges 19-20
6	Reactive Energy Charge	188.53681	02.09.19	Reactive Charges 19-20
7	Surplus DSM amount transferred	32210.51998	24.09.19	DSM Charges 19-20
8	Reactive Energy Charge	173.06004	01.10.19	Reactive Charges 19-20
9	Reactive Energy Charge	273.15002	01.11.19	Reactive Charges 19-20
10	Reactive Energy Charge	401.09564	04.12.19	Reactive Charges 19-20
11	Reactive Energy Charge	252.53573	02.01.20	Reactive Charges 19-20
12	Reactive Energy Charge	148.65520	07.02.20	Reactive Charges 19-20
13	Reactive Energy Charge	205.22437	04.03.20	Reactive Charges 19-20
14	Bank interest from Reactive acct	0.21706	03.04.20	Bank interest from Reactive acct
15	Reactive Energy Charge	843.03166	03.06.20	Reactive Charges 19-20 & 20-21
16	Reactive Energy Charge	507.80481	07.07.20	Reactive Charges 17-18,18-19 & 20-21
17	Reactive Energy Charge	309.41068	06.08.20	Reactive Charges 17-18,18-19 & 20-21
18	Reactive Energy Charge	83.23955	02.09.20	Reactive Charges 19-20 & 20-21
19	Bank interest of DSM A/C-TDS portion	251.65235	18.09.20	Bank interest TDS portion transferred from POSOCO,CC
20	Bank interest of DSM A/C-TDS portion	15.64788	22.09.20	Bank interest TDS portion transferred from POSOCO,CC
21	Reactive Energy Charge	118.85979	06.10.20	Reactive Charges 20-21
22	Reactive Energy Charge	101.42971	04.11.20	Reactive Charges 20-21
23	Reactive Energy Charge	82.34791	04.12.20	Reactive Charges 20-21
24	Reactive Energy Charge	500.95333	06.01.21	Reactive Charges of 19-20 & 20-21
25	Reactive Energy Charge	92.51486	03.02.21	Reactive Charges of 19-20 & 20-21
26	Reactive Energy Charge	50.22963	04.03.21	Reactive Charges of 19-20 & 20-21
27	Reactive Energy Charge	32.15331	07.04.21	Reactive Charges of 19-20 & 20-21
28	Reactive Energy Charge	39.59760	05.05.21	Reactive Charges of 19-20 & 20-21
29	Reactive Energy Charge	18.96069	01.06.21	Reactive Charges of 20-21 & 21-22
30	Reactive Energy Charge	392.24613	12.07.21	Reactive Charges of 20-21 & 21-22
31	Reactive Energy Charge	214.22298	22.07.21	Reactive Charges 21-22
32	Addl. Dev	392.94201	25.08.21	DSM Charges of 19-20 received from Jharkhand
33	Addl. Dev	5.99326	03.09.21	DSM Charges of 19-20 received from Jharkhand
34	Reactive Energy Charge	330.73064	09.09.21	Reactive Charges 21-22
35	Addl. Dev	1334.97939	23.09.21	DSM Charges of 20-21 received from Bihar
36	Addl. Dev	500.00000	27.09.21	DSM Charges of 20-21 received from Bihar
37	Addl. Dev	1500.00000	29.09.21	DSM Charges of 20-21 received from Bihar
38	Addl. Dev	500.00000	01.10.21	DSM Charges of 20-21 received from Bihar
39	Addl. Dev	1000.00000	05.10.21	DSM Charges of 20-21 received from Bihar
40	Addl. Dev	402.60050	05.10.21	DSM Charges of 20-21 received from Jharkhand
41	Reactive Energy Charge	131.05971	07.10.21	Reactive Charges 21-22
42	Addl. Dev	1000.00000	22.10.21	DSM Charges of 20-21 received from Bihar
43	Addl. Dev	1000.00000	26.10.21	DSM Charges of 20-21 received from Bihar
44	Addl. Dev	539.21266	28.10.21	DSM Charges of 20-21 received from Bihar
45	Reactive Energy Charge	224.70676	03.11.21	Reactive Charges 21-22
46	Reactive Energy Charge	366.25533	03.12.21	Reactive Charges 21-22
47	Reactive Energy Charge	5.33816	09.12.21	Interest Amount received in Reactive Account
48	Addl. Dev	489.56759	04.01.22	DSM Charges of 20-21 received from Jharkhand
49	Reactive Energy Charge	449.70232	04.01.22	Reactive Charges 21-22
50	Reactive Energy Charge	547.40910	04.02.22	Reactive Charges 21-22
51	Addl. Dev	7182.00679	08.02.22	Excess amount after clearing Wk-43
52	Addl. Dev	103.38490	28.02.22	DSM Charges of 20-21 received from Jharkhand and POSOCO CC (REC)
53	Reactive Energy Charge	22.28702	04.03.22	Reactive Charges 21-22
54	Reactive Energy Charge	978.22379	08.03.22	Reactive Charges 21-22
55	Reactive Energy Charge	502.63132	04.04.22	Reactive Charges 21-22
56	Addl. Dev	13586.90110	02.05.22	Addl Dev Charge 21-22
57	Reactive Energy Charge	91.67842	02.05.22	Reactive Charges 21-22
58	Addl. Dev	323.72543	17.05.22	DSM Charges of 21-22 received from Jharkhand
59	Addl. Dev	223.19034	31.05.22	DSM Charges of 21-22 received from Jharkhand
60	Addl. Dev	17070.55890	02.06.22	DSM charges
61	Reactive Energy Charge	104.77973	02.06.22	Reactive Charges 21-22
62	Addl. Dev	700.00000	10.06.22	DSM Charges of 21-22 received from Jharkhand and DVC (Bhutan)
63	Addl. Dev	230.65522	24.06.22	DSM Charges of 21-22 received from Jharkhand and DVC (Bhutan)
64	Addl. Dev	200.00000	28.06.22	DSM Charges of 21-22 received from Jharkhand
65	Addl. Dev	200.00000	01.07.22	DSM Charges of 21-22 received from Jharkhand
66	Reactive Energy Charge	491.14301	08.07.22	Reactive Charges 21-22 received from Bihar
67	Addl. Dev	200.00000	14.07.22	DSM Charges of 21-22 received from Jharkhand
68	Addl. Dev	900.00000	20.07.22	DSM Charges of 21-22 received from Sikkim and Bihar
69	Addl. Dev	300.00000	25.07.22	DSM Charges of 21-22 received from Jharkhand
70	Addl. Dev	200.00000	26.07.22	DSM Charges of 21-22 received from Jharkhand
71	Addl. Dev	400.00000	28.07.22	DSM Charges of 21-22 received from Jharkhand
72	Addl. Dev	553.96908	08.08.22	DSM Charges of 21-22 received from Bihar
73	Reactive Energy Charge	56.45017	08.08.22	Reactive Charges 22-23
74	Reactive Energy Charge	586.61896	07.09.22	Reactive Charges 22-23
75	Reactive Energy Charge	152.77578	07.10.22	Reactive Charges 22-23
76	Addl. Dev	15507.63580	07.11.22	DSM Charges 22-23
77	Reactive Energy Charge	94.63234	07.11.22	Reactive Charges 22-23
78	Reactive Energy Charge	89.18883	02.12.22	Reactive Charges 22-23
79	Reactive Energy Charge	162.52773	05.01.23	Reactive Charges 22-23
80	Reactive Energy Charge	3.93158	07.02.23	Reactive Charges 22-23
81	Reactive Energy Charge	292.70498	06.03.23	Reactive Charges 22-23
82	Reactive Energy Charge	321.80291	30.03.23	Reactive Charges 22-23
83	Addl. Dev	10079.39783	06.04.23	DSM Charges 22-23
84	Reactive Energy Charge	716.65397	04.05.23	Reactive Charges 23-24
85	Reactive Energy Charge	508.35350	07.06.23	Reactive Charges 23-24
86	Reactive Energy Charge	83.11163	05.07.23	Reactive Charges 23-24
87	Reactive Energy Charge	498.36959	04.08.23	Reactive Charges 23-24
88	Reactive Energy Charge	50.77966	05.09.23	Reactive Charges 23-24
89	Reactive Energy Charge	5.26035	06.10.23	Reactive Charges 23-24
90	Reactive Energy Charge	6.79669	06.11.23	Reactive Charges 23-24
91	Reactive Energy Charge	0.11306	05.12.23	Reactive Charges 23-24
	<b>Total</b>	<b>218731.92988</b>		

DSM account Reconciliation Status of ER constituents

Annexure-V

Name of The Utility	2019-20				2020-21				2021-22				2022-23				2023-24				2024-25	
	Q1 (17.07.19)	Q2 (21.10.19)	Q3 (13.01.20)	Q4 (15.04.20)	Q1 (15.07.20)	Q2 (23.10.20)	Q3 (20.01.21)	Q4 (28.04.21)	Q1 (06.07.21)	Q2 (07.10.21)	Q3 (11.01.22)	Q4 (18.04.22)	Q1 (15.07.22)	Q2 (21.10.22)	Q3 (19.01.23)	Q4 (28.04.23)	Q1 (28.07.23)	Q2 (19.10.23)	Q3 (25.01.24)	Q4 (24.04.24)	Q1 (30.07.24)	Q2 (28.10.24)
BSPHCL	YES	YES	YES	YES	YES	YES	YES	YES	YES	YES	YES	YES	YES	YES	YES	YES	NO	NO	NO	NO	NO	NO
JUVNL	YES	YES	YES	YES	YES	NO	NO	NO	NO	NO	NO	NO	NO	NO	NO	NO	NO	NO	NO	NO	NO	NO
DVC	YES	YES	YES	YES	YES	YES	YES	YES	YES	YES	YES	YES	NO	NO	NO	NO	NO	NO	NO	NO	NO	NO
GRIDCO	YES	YES	YES	YES	YES	YES	YES	YES	YES	YES	YES	YES	YES	YES	YES	YES	YES	YES	YES	YES	YES	YES
WBSETCL	YES	YES	YES	YES	YES	NO	NO	YES	YES	NO	NO	NO	NO	NO	NO	YES	YES	YES	YES	YES	NO	NO
SIKKIM	YES	NO	NO	NO	NO	NO	NO	NO	NO	NO	NO	NO	NO	NO	NO	NO	NO	NO	NO	NO	NO	NO
NTPC	YES	YES	YES	YES	YES	YES	YES	YES	Yes	YES	YES	YES	YES	YES	YES	YES	YES	YES	YES	YES	YES	YES
NHPC	YES	YES	YES	YES	YES	YES	YES	NO	YES	YES	YES	YES	YES	YES	YES	NO	NO	NO	YES	YES	NO	NO
MPL	YES	YES	YES	YES	YES	YES	YES	YES	YES	YES	YES	YES	YES	NO	NO	YES	YES	YES	YES	YES	YES	NO
APNRL	YES	YES	YES	YES	YES	NO	NO	NO	NO	NO	NO	NO	NO	NO	NO	NO	NO	NO	NO	NO	NO	NO
CHUZACHEN(GATI)	YES	YES	YES	YES	YES	YES	YES	YES	YES	YES	YES	YES	YES	YES	YES	YES	YES	YES	YES	YES	YES	NO
NVVN(Ind-Bng)	YES	YES	YES	YES	YES	NO	NO	NO	YES	YES	YES	YES	YES	YES	YES	NO	YES	YES	YES	YES	YES	YES
NVVN(Ind-Nep)	YES	YES	YES	YES	YES	NO	NO	NO	YES	YES	YES	YES	YES	YES	YES	NO	YES	YES	YES	YES	YES	YES
NVVN (Bhutan)	NA	NA	NA	NA	NA	NA	NA	NA	NA	NA	NA	NA	NA	NA	NA	NA	NA	NA	YES	YES	YES	YES
NVVN-NEA Bihar	NA	NA	NA	NA	NA	NA	NA	NA	NA	NA	NA	NA	NA	NA	NA	NA	NA	NA	NA	NA	YES	YES
GMR	YES	YES	YES	YES	NO	NO	NO	YES	NO	NO	NO	NO	NO	NO	NO	NO	NO	NO	NO	NO	NO	NO
JITPL	YES	YES	YES	YES	YES	YES	YES	NO	NO	NO	NO	YES	NO	NO	YES	NO	NO	NO	NO	YES	YES	NO
IBEUL (JSW Energy)	NA	NA	NA	NA	NA	NA	NA	NA	NA	NA	NA	NA	NA	NA	NA	NA	NA	NA	NA	NO	NO	NO
TPTCL (DAGACHU)	YES	YES	YES	YES	YES	NO	NO	NO	YES	YES	YES	YES	NO	NO	NO	NO	NO	NO	YES	YES	NO	NA
JLHEP(DANS ENERGY)	YES	YES	YES	YES	YES	YES	YES	YES	YES	YES	YES	YES	NO	NO	NO	NO	YES	YES	NO	YES	YES	YES
BRBCL	YES	YES	YES	YES	YES	YES	YES	YES	YES	YES	YES	YES	YES	NO	NO	NO	YES	YES	YES	YES	NO	YES
POWERGRID (ER-I)	YES	YES	YES	YES	YES	YES	YES	YES	YES	YES	YES	YES	YES	YES	YES	YES	NO	NO	NO	NO	YES	NO
POWERGRID (ER-II)	YES	YES	YES	YES	YES	YES	YES	YES	YES	YES	YES	YES	YES	YES	YES	YES	YES	YES	NO	YES	NO	NO
TUL (TEESTA-III)	YES	YES	YES	YES	YES	YES	YES	YES	YES	YES	YES	YES	NO	YES	YES	YES	NO	NO	YES	YES	NA	NA
DIKCHU	YES	YES	YES	YES	YES	NO	NO	NO	NO	NO	NO	NO	YES	NO	NO	NO	YES	NO	NO	NA	NA	NA
SHIGA (TASHIDING)	YES	YES	YES	YES	YES	NO	NO	YES	YES	YES	YES	NO	NO	NO	NO	YES	YES	NO	YES	NO	YES	YES
Rongnichu	NA				NA				NA				YES				NO				NO	

- (1)The dates in the bracket indicates the date of sending the Reconciliation statements by ERLDC to utilities.
- (2) YES Indicates that signed reconciliation statement received by ERLDC
- (3) NO Indicates that signed reconciliation statement is not received by ERLDC



## Reactive Account Reconciliation Status

Annexure-VI

Name of The Utility	2019-20				2020-21				2021-22				2022-23				2023-24				2024-25	
	Q1 (17.07.19)	Q2 (21.10.19)	Q3 (13.01.20)	Q4 (15.04.20)	Q1 (15.07.20)	Q2 (23.10.20)	Q3 (20.01.21)	Q4 (28.04.21)	Q1 (06.07.21)	Q2 (07.10.21)	Q3 (11.01.22)	Q4 (18.04.22)	Q1 (15.07.22)	Q2 (21.10.22)	Q3 (19.01.23)	Q4 (28.04.23)	Q1 (28.07.23)	Q2 (19.10.23)	Q3 (25.01.24)	Q4 (24.04.24)	Q1 (30.07.24)	Q2 (28.10.24)
BSPHCL	YES	NA	YES	YES	YES	YES	YES	YES	YES	YES	YES	YES	YES	YES	YES	YES	NO	NO	NO	NO	NO	NO
JUVNL	NO	NO	NO	NO	NO	NO	NO	NO	NO	NO	NO	NO	NO	NO	NO	NO	NO	NO	NO	NO	NO	NO
DVC	YES	N/A	N/A	N/A	YES	NO	NO	YES	YES	YES	YES	YES	NO	NO	NO	NO	NO	NO	NO	NO	NO	NO
GRIDCO	YES	YES	YES	YES	YES	YES	YES	YES	YES	YES	YES	YES	YES	YES	NO	YES	YES	YES	YES	YES	YES	YES
WBSETCL	YES	YES	NO	NO	YES	NO	NO	YES	YES	NO	NO	NO	NO	NO	NO	NO	NO	NO	NO	NO	NO	NO
SIKKIM	NO	NO	NO	NO	NO	NO	NO	NO	NO	NO	NO	NO	NO	NO	NO	NO	NO	NO	NO	NO	NO	NO
NTPC	NA																		YES	NO	YES	YES
NHPC																			YES	YES	NO	NO
MPL																			NA	NA	YES	NO
APNRL																			NO	NO	NO	NO
CHUZACHEN(GATI)																			YES	YES	NO	NO
NVVN(Ind-Bng)																			YES	YES	YES	YES
NVVN(Ind-Nep)																			YES	YES	YES	YES
NVVN (Bhutan)																			NA	YES	YES	YES
GMR																			NO	NO	YES	YES
JITPL																			NO	YES	NO	NO
INBEUL																			NO	NO	YES	NO
TPTCL (DAGACHU)																			NO	NO	NO	NO
JLHEP(DANS ENERGY)																			NO	YES	NO	NO
BRBCL																			YES	YES	NO	YES
POWERGRID (ER-I)																			NO	NO	NO	YES
POWERGRID (ER-II)																			NO	YES	YES	NO
TUL (TEESTA-III)																			NA	NA	NO	NO
DIKCHU																			NA	NA	NO	NO
SHIGA (TASHIDING)																			NO	YES	NO	NO
OPGC																			NA	NA	YES	YES
Rongnichu	YES	YES	NO	NO																		

### TRAS Account Reconciliation Status

Name of The Utility	2023-24				2024-25	
	Q1 (28.07.23)	Q2 (19.10.23)	Q3 (25.01.24)	Q4 (24.04.24)	Q1 (30.07.24)	Q2 (28.10.24)
NTPC	YES	YES	YES	YES	YES	YES
BRBCL	YES	YES	YES	YES	YES	YES
MPL	YES	YES	NO	YES	YES	NO

### SRAS Account Reconciliation Status

Name of The Utility	2022-23		2023-24				2024-25	
	Q3 (19.01.23)	Q4 (28.04.23)	Q1 (28.07.23)	Q2 (19.10.23)	Q3 (25.01.24)	Q4 (24.04.24)	Q1 (30.07.24)	Q2 (28.10.24)
NTPC	YES	YES	YES	YES	YES	YES	YES	YES
MPL	YES	YES	YES	YES	YES	YES	YES	NO
NHPC	YES	NO	NO	NO	YES	YES	NO	NO
BRBCL							YES	YES

### SCUC Account Reconciliation Status

Name of The Utility	2024-25	
	Q1 (30.07.24)	Q2 (28.10.24)
NTPC	YES	YES
BRBCL	YES	YES
MPL	YES	NO



## ERLDC Fees &amp; Charges

## Annexure-IX

Sl No	Entity Name	2021-22				2022-23				2023-24				2024-25	
		Q1	Q2	Q3	Q4	Q1	Q2	Q3	Q4	Q1	Q2	Q3	Q4	Q1	Q2
1	Adhunik PNRL	Yes	Yes				Yes		Yes	Yes				Yes	
2	Alipurduar HVDC														
3	Alipurduar Transmission Limited														
4	BARH STG-I	Yes	Yes	Yes	Yes	Yes	Yes	Yes	Yes	Yes	Yes	Yes	Yes	Yes	Yes
5	BARH-II	Yes	Yes	Yes	Yes	Yes	Yes	Yes	Yes	Yes	Yes	Yes	Yes	Yes	Yes
6	Bharatiya Rail Bijlee Company Ltd.	Yes				Yes	Yes								
7	Bihar State Power Transmission Company Ltd.								Yes						
8	Darbhanga-Motihari Transmission Company Ltd.	Yes	Yes												
9	Darlipali Super Thermal Power Project	Yes	Yes												
10	DVC														
11	DVC Seller														
12	ENICL														
13	FSTPP-I - II	Yes	Yes	Yes	Yes	Yes	Yes	Yes	Yes	Yes	Yes	Yes	Yes	Yes	Yes
14	FSTPP-III	Yes	Yes	Yes	Yes	Yes	Yes	Yes	Yes	Yes	Yes	Yes	Yes	Yes	Yes
15	GI HYDRO					Yes	Yes				Yes				Yes
16	GMR Kamalanga Energy Ltd.														
17	GRIDCO	Yes	Yes	Yes	Yes							Yes	Yes	Yes	
18	HVDC SASARAM														
19	Jharkhand Bijli Vitran Nigam Limited														
20	JINDAL INDIA THERMAL POWER LTD.														
21	Jorethang Loop HEP							Yes	Yes	Yes	Yes				
22	Kanti Bijlee Utpadan Nigam limited	Yes	Yes	Yes	Yes			Yes	Yes	Yes	Yes	Yes	Yes	Yes	Yes
23	KHSTPP-I	Yes	Yes	Yes	Yes	Yes	Yes	Yes	Yes	Yes	Yes	Yes	Yes	Yes	Yes
24	KHSTPP-II	Yes	Yes	Yes	Yes	Yes	Yes	Yes	Yes	Yes	Yes	Yes	Yes	Yes	Yes
25	Maithon Power Limited	Yes	Yes	Yes	Yes	Yes	Yes	Yes	Yes	Yes	Yes		Yes	Yes	
26	Nabinagar Power Generation Corporation Ltd.					Yes		Yes	Yes	Yes	Yes	Yes	Yes	Yes	Yes
27	NORTH KARANPURA TRANSCO LIMITED														
28	NVVN Bangladesh						Yes				Yes		Yes	Yes	
29	NVVN Nepal										Yes				
30	Odisha Generation Phase-II Transmission Limited														
31	PMJTL														
32	PMTL														
33	POWERGRID ISTS														
34	POWERLINK ISTS														
35	Purulia & Kharagpur Transmission Comp. Ltd.														
36	RANGEET HEP														
37	Rognichu HEP					Yes									
38	Shiga Energy Private Ltd							Yes	Yes	Yes	Yes				
39	SIKKIM														
40	Sneha Kinetic Power Project Private Ltd														
41	TALCHER SOLAR PV POWER STATION,NTPC LIMITED	Yes	Yes												
42	Tata Power Trading Company Limited		Yes	Yes		Yes									
43	TEESTA HEP														
44	Teesta Urja Ltd.(Teesta -III HEP)	Yes													
45	Teestavalley Power Transmission Ltd.												Yes		
46	TSTPP-I	Yes	Yes												
47	WBSEDCL				Yes		Yes			Yes					
48	ERNVNBHUTAN_NIKACHHU												Yes	Yes	
49	NVVN_DGPC Basochhu												Yes		